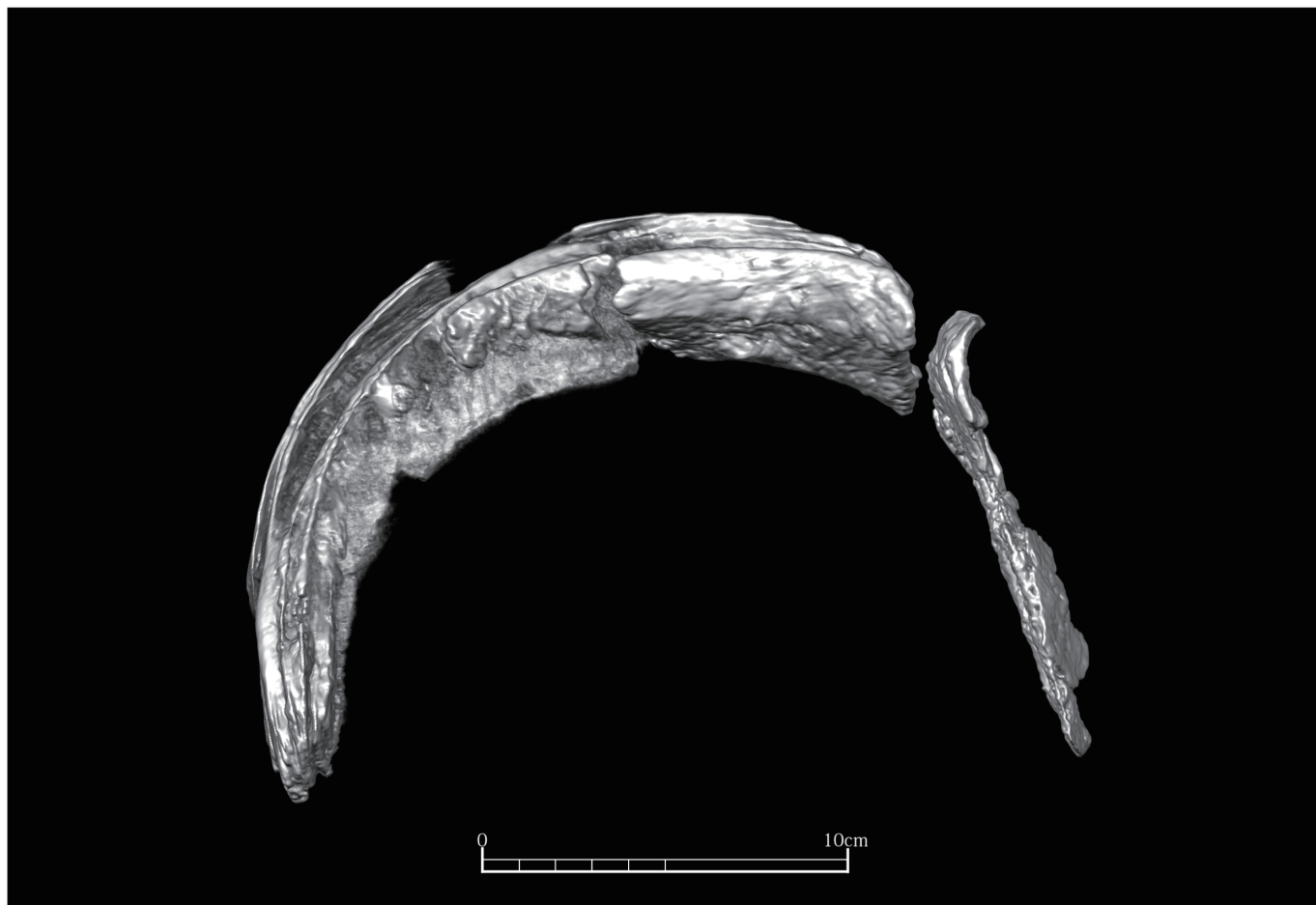
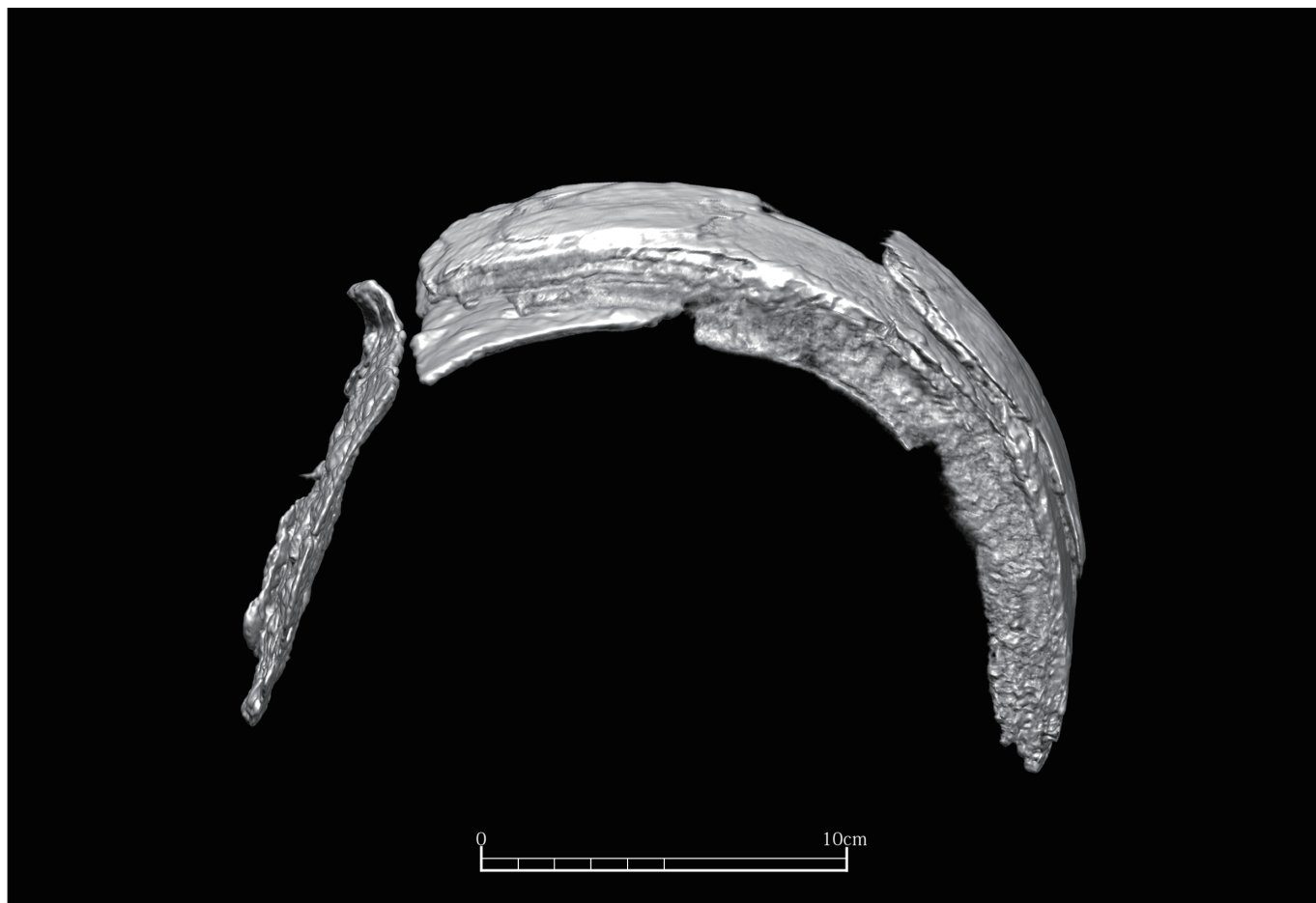




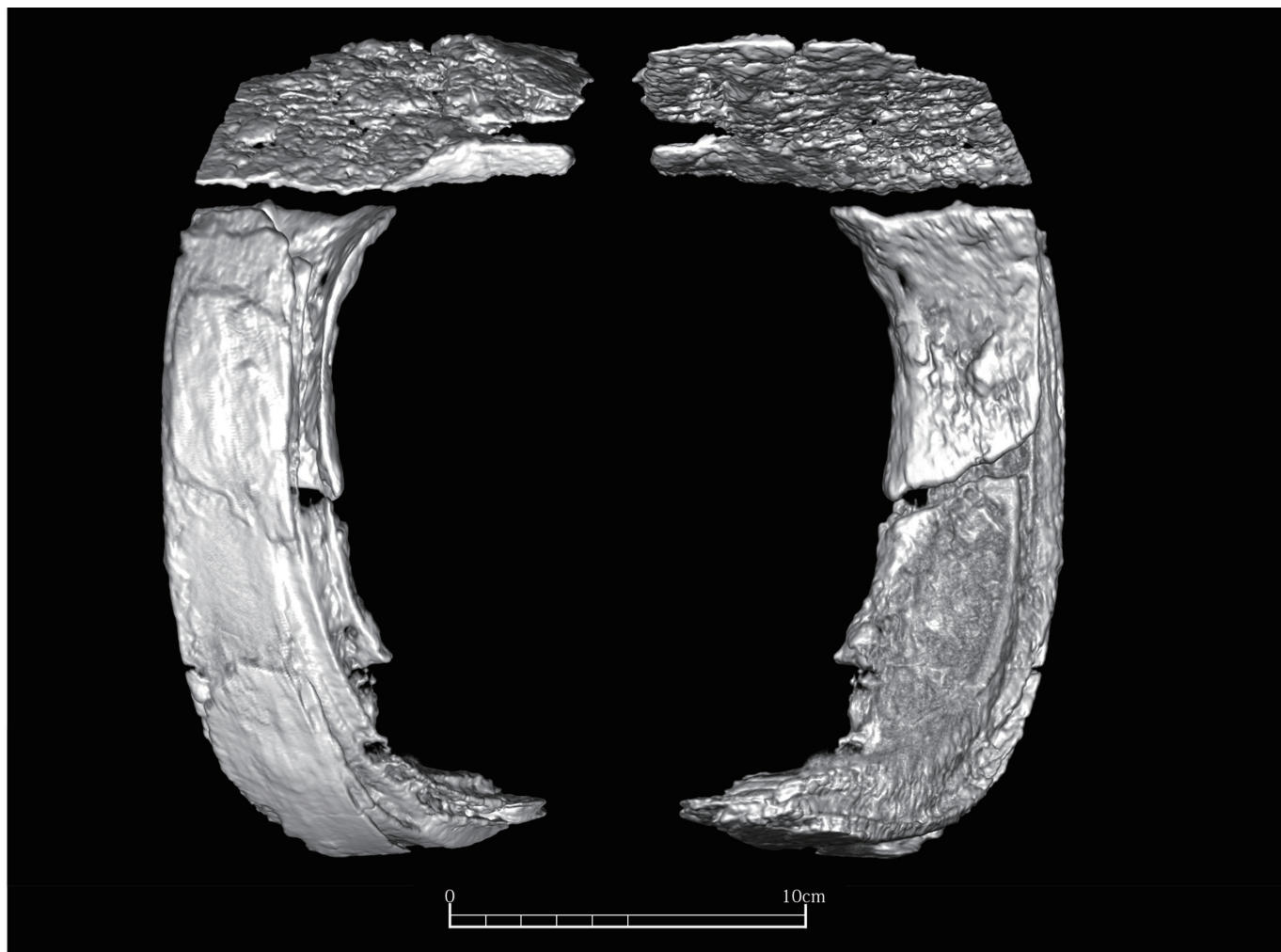
前面



後面

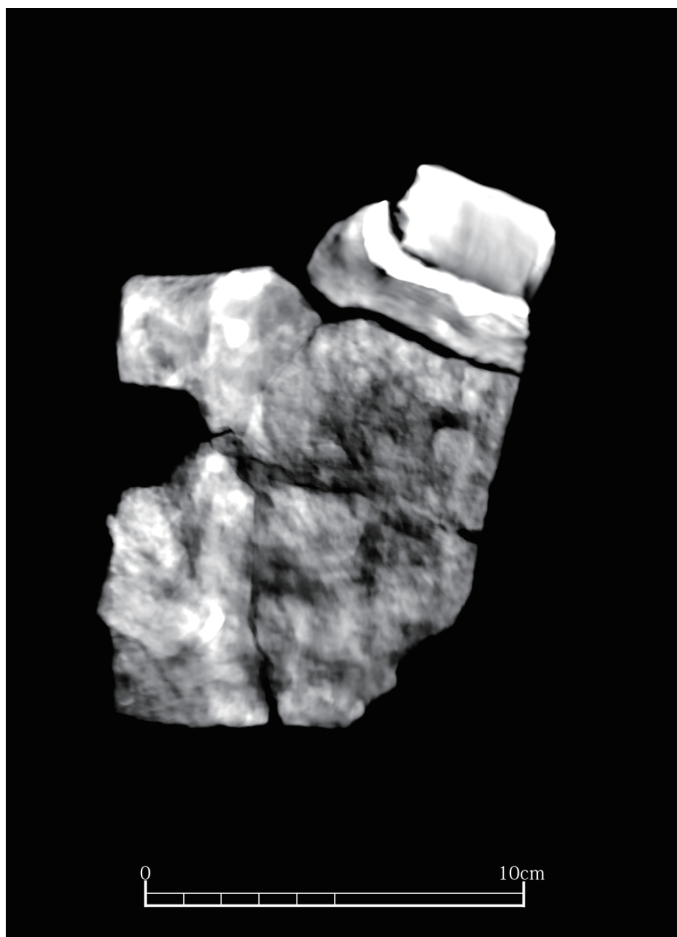


黒姫山古墳 T 6号内頸甲 右本体板 外面・内面

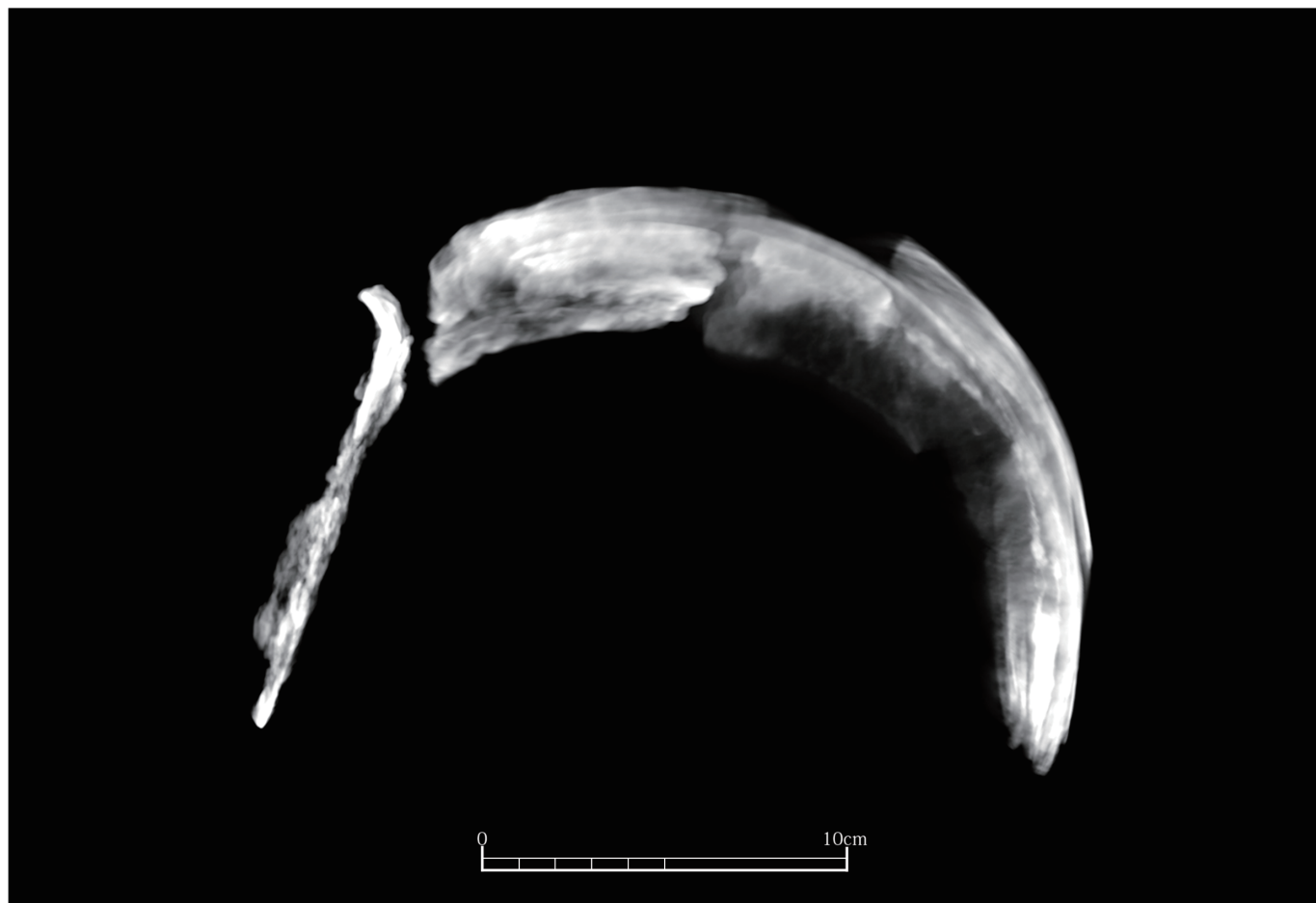




前面

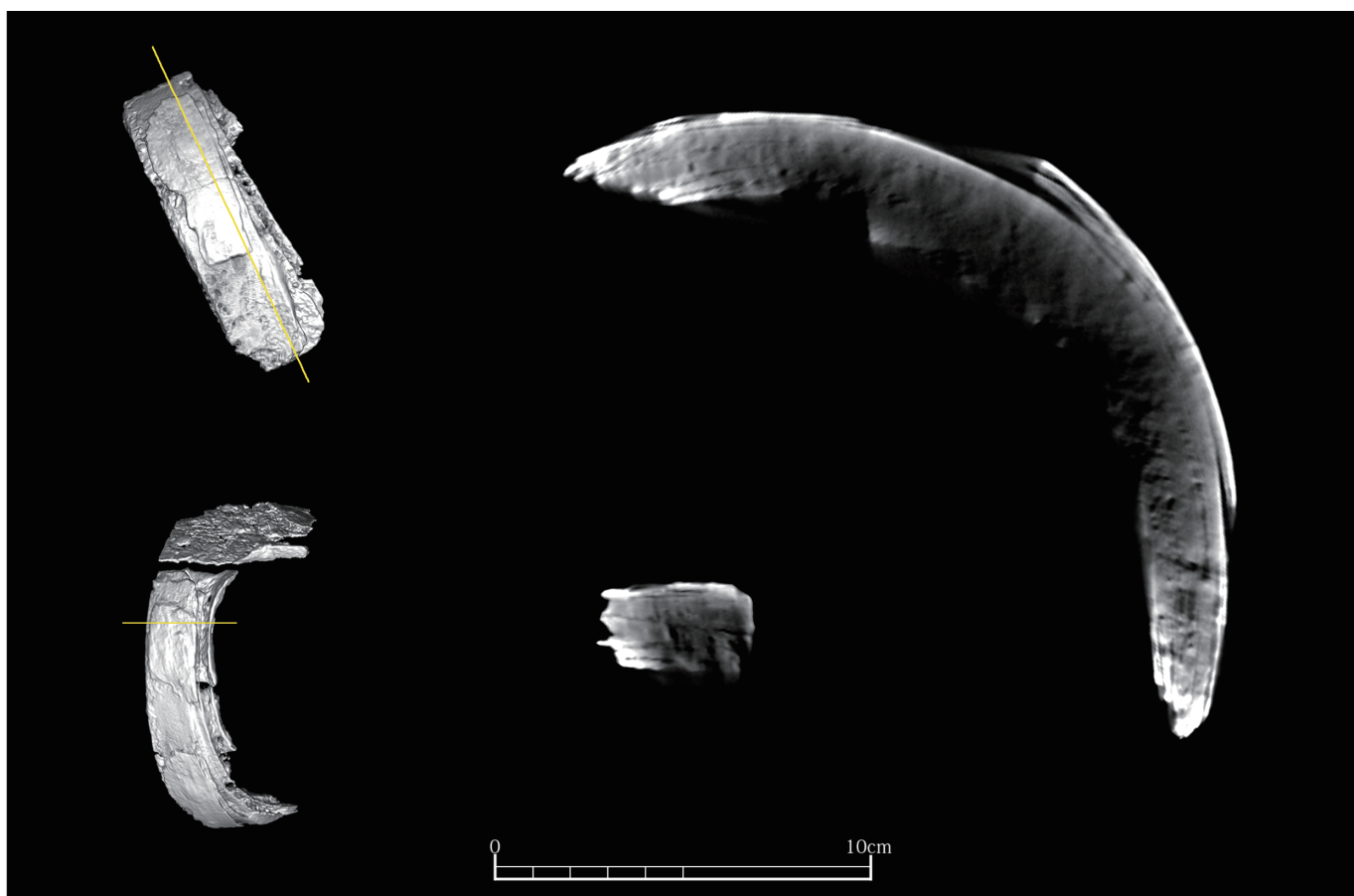
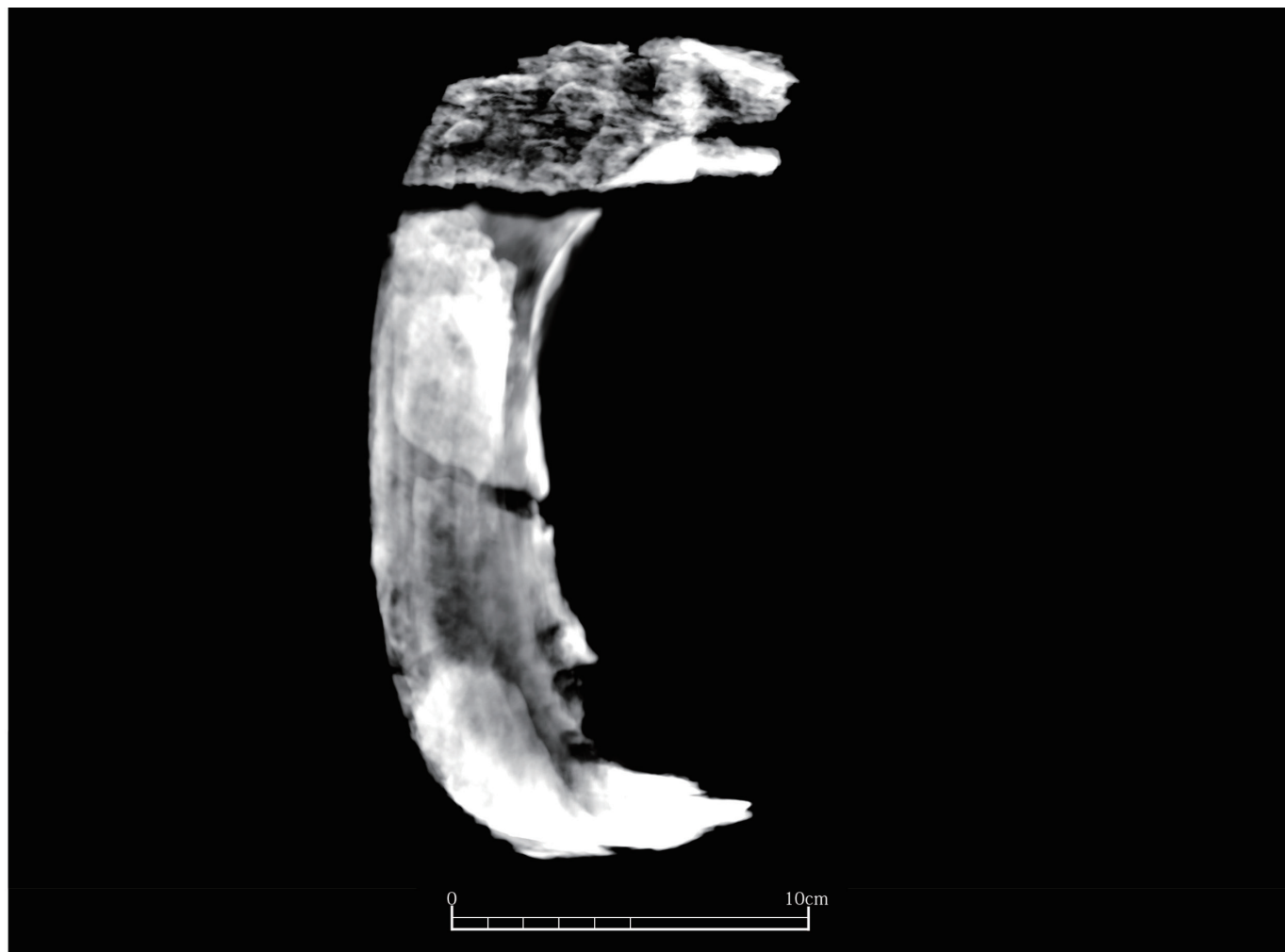


後面

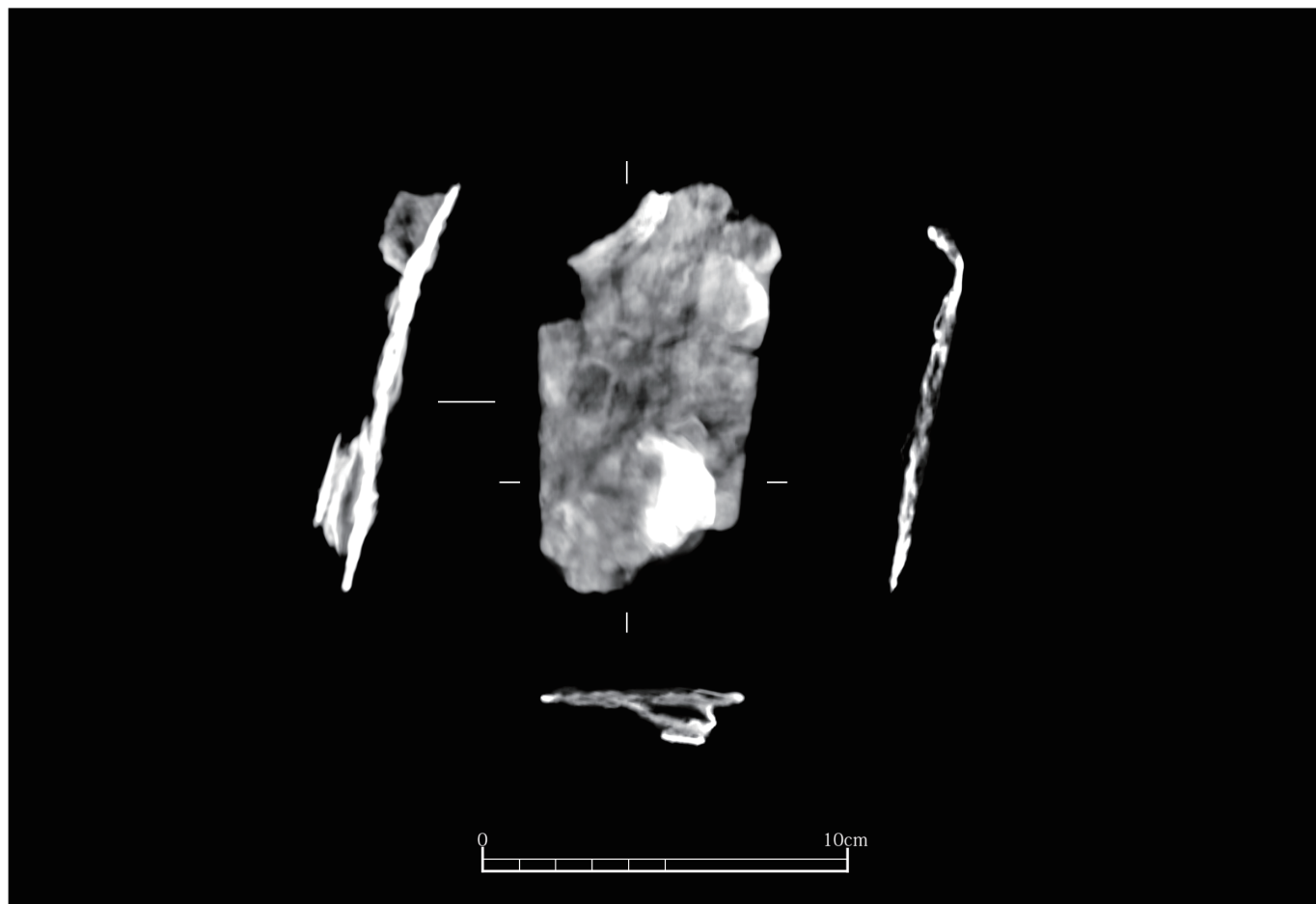
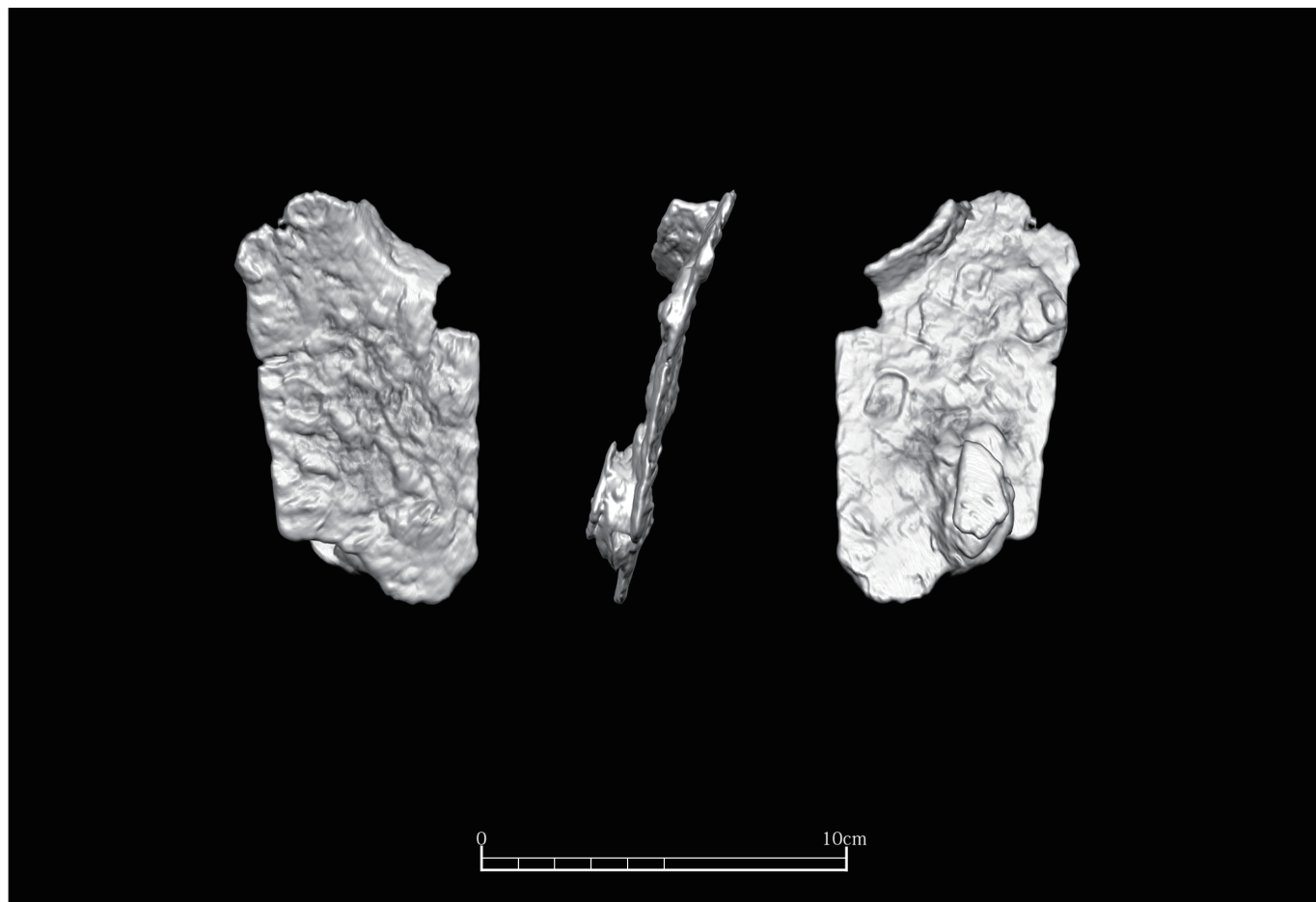


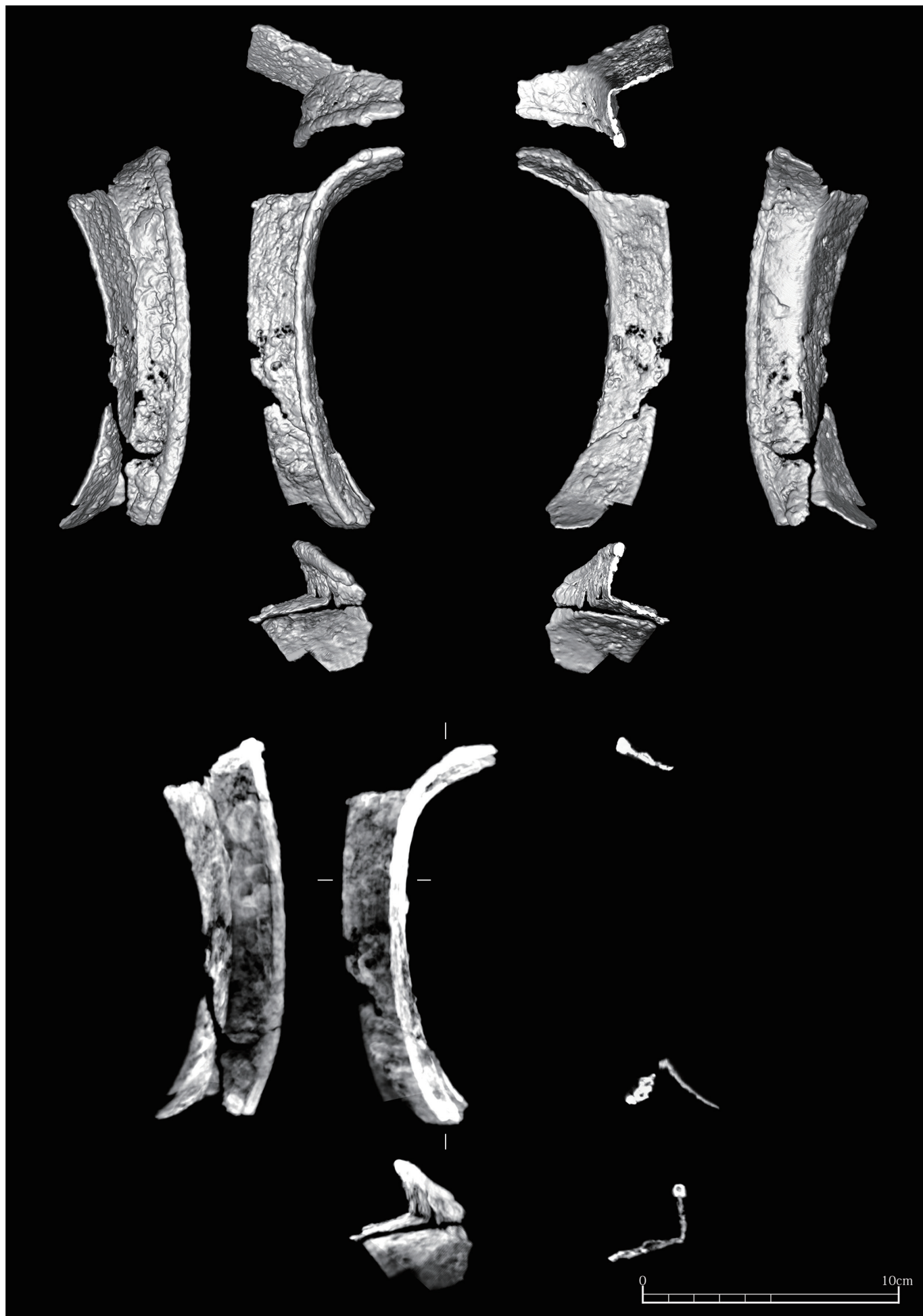
右側面

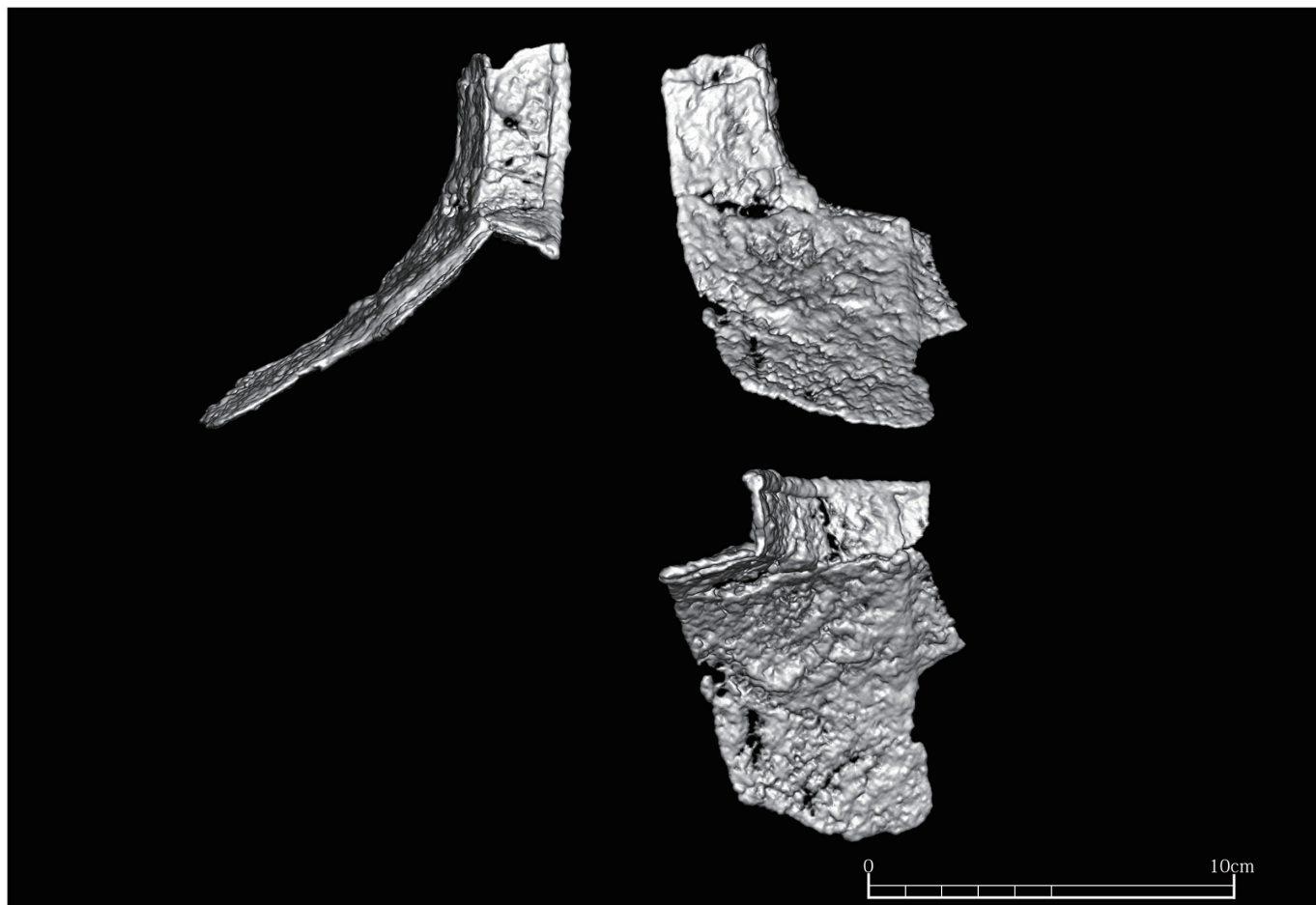
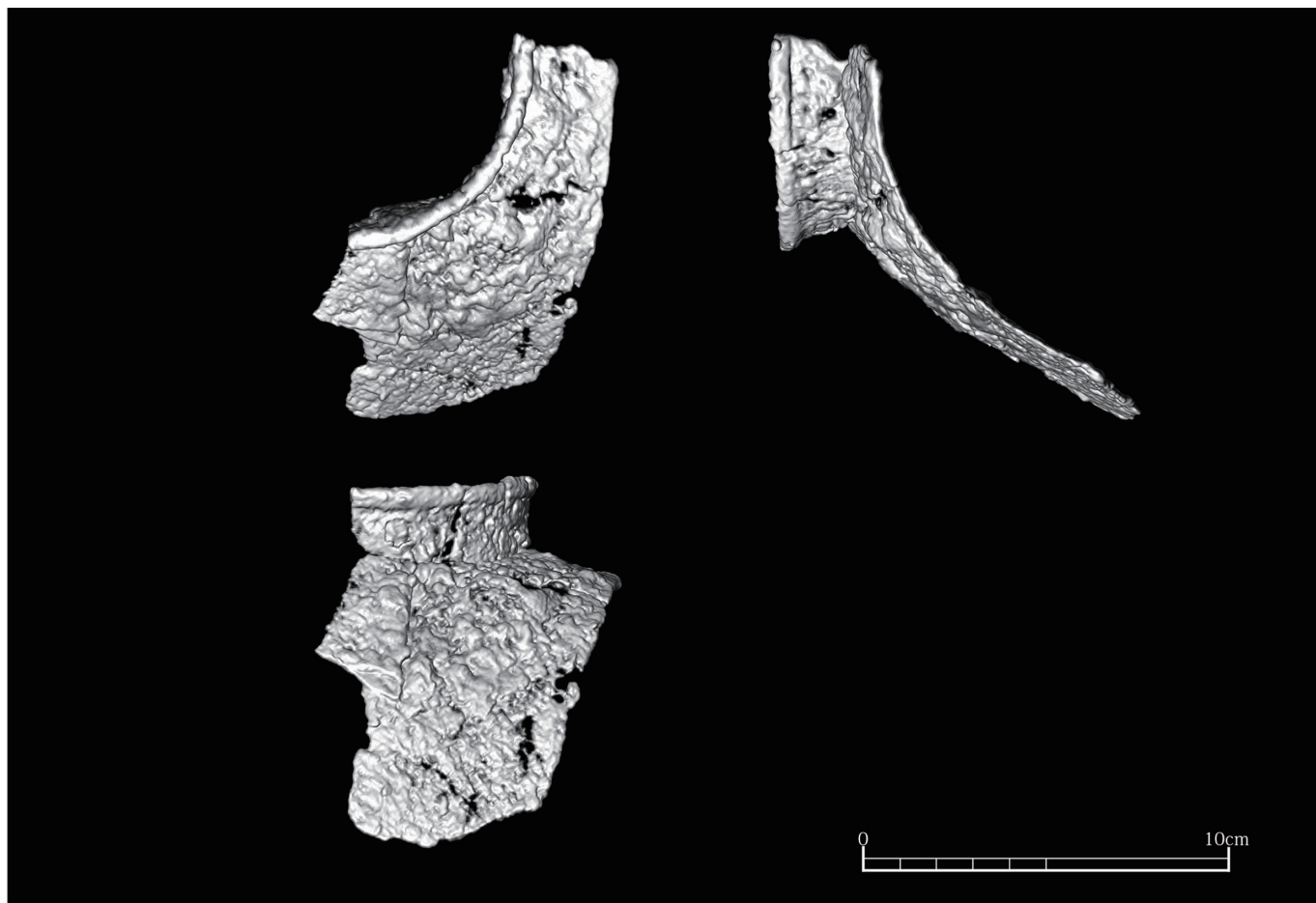
黒姫山古墳 T 6号内頸甲 右本体板 X線透過2、右肩甲 断面



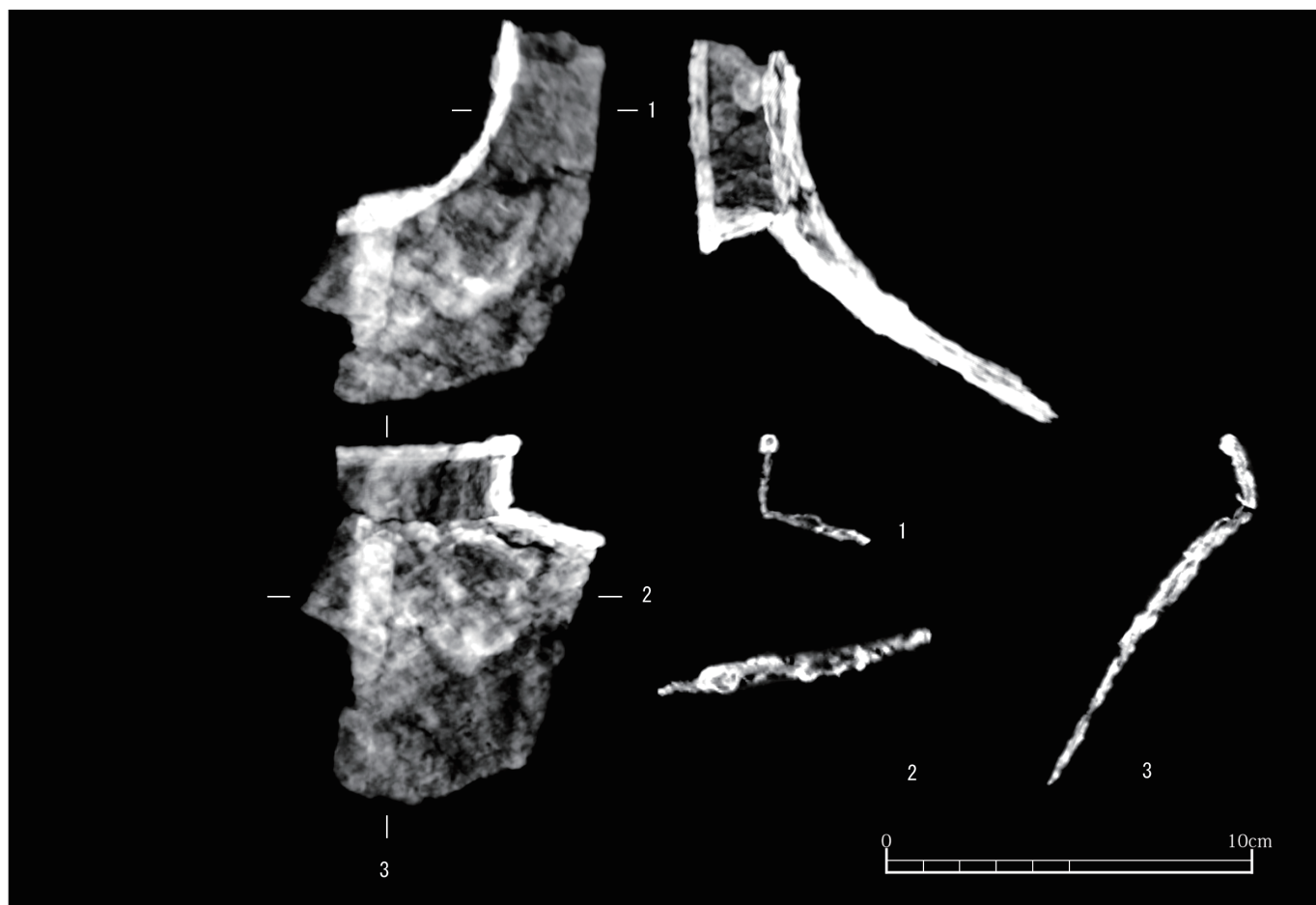
黒姫山古墳 T 6号内頸甲 左本体板 前面

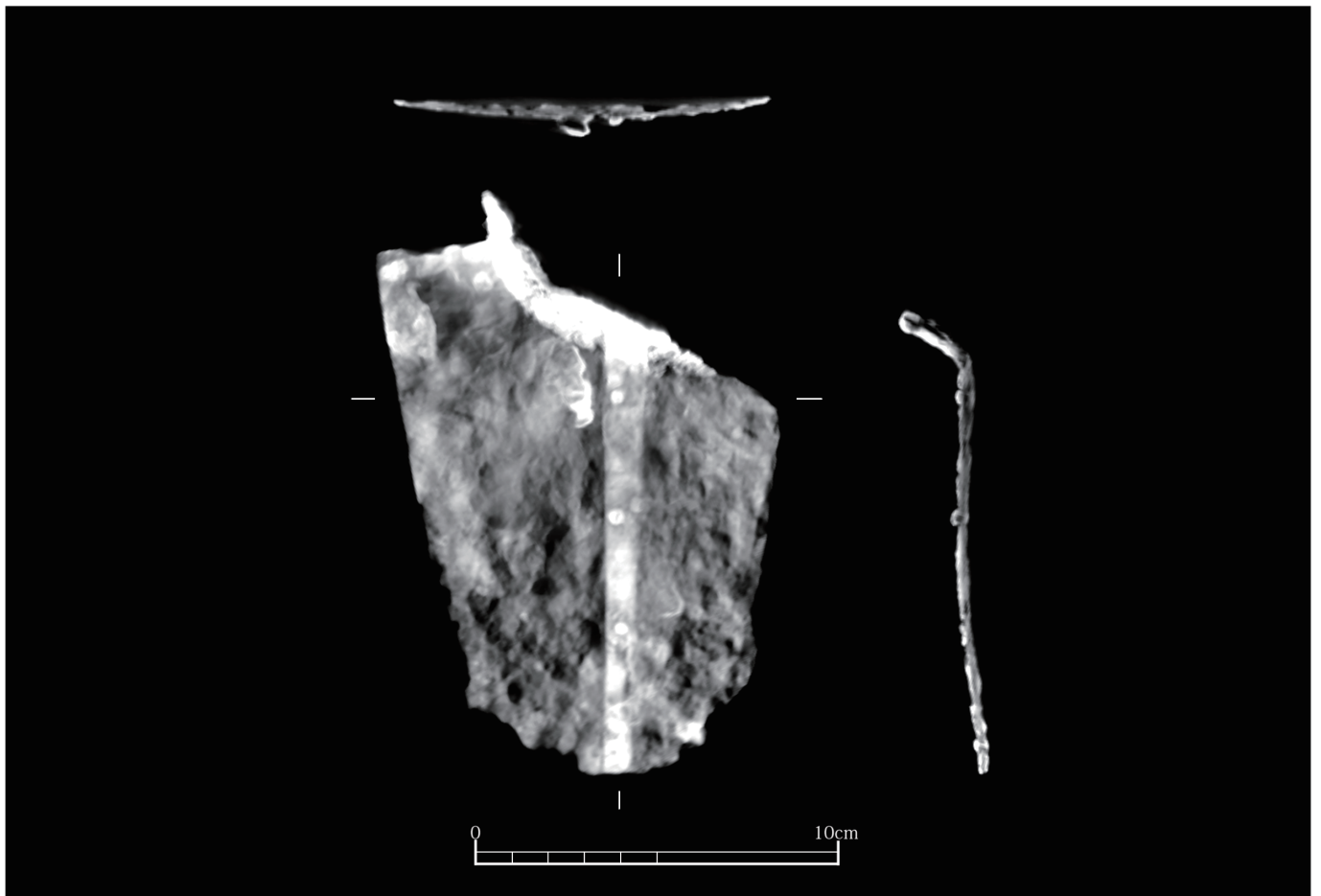
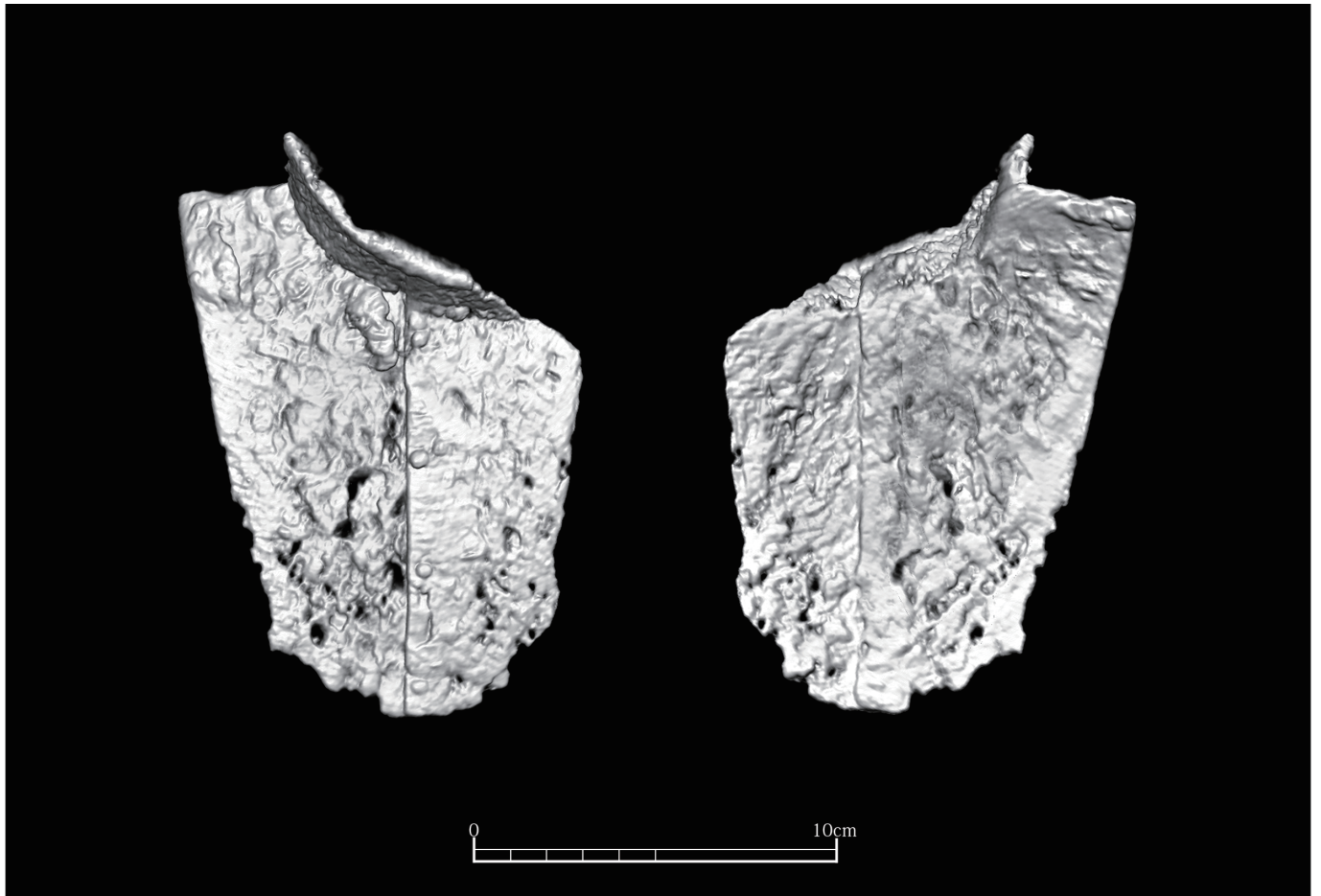


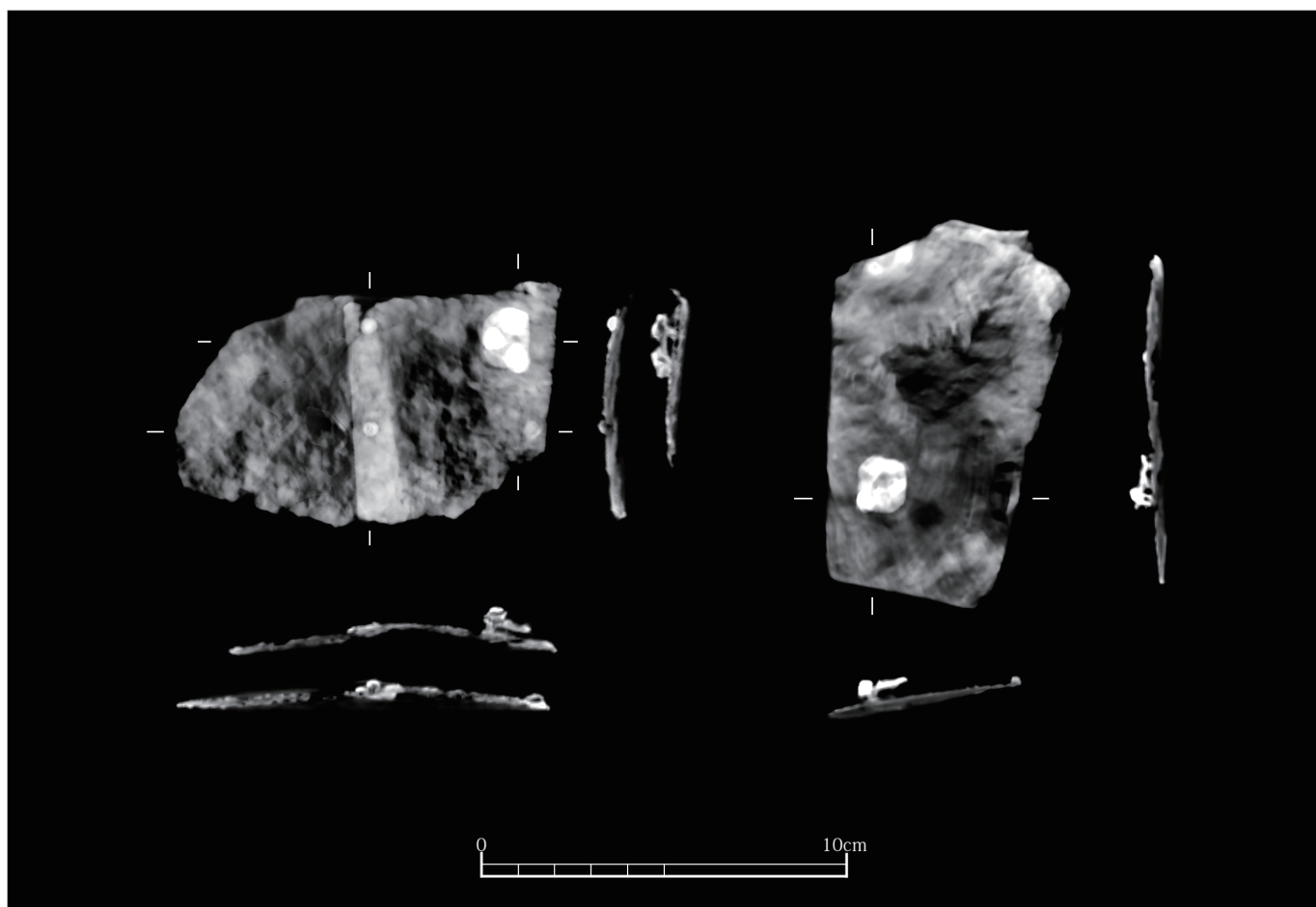
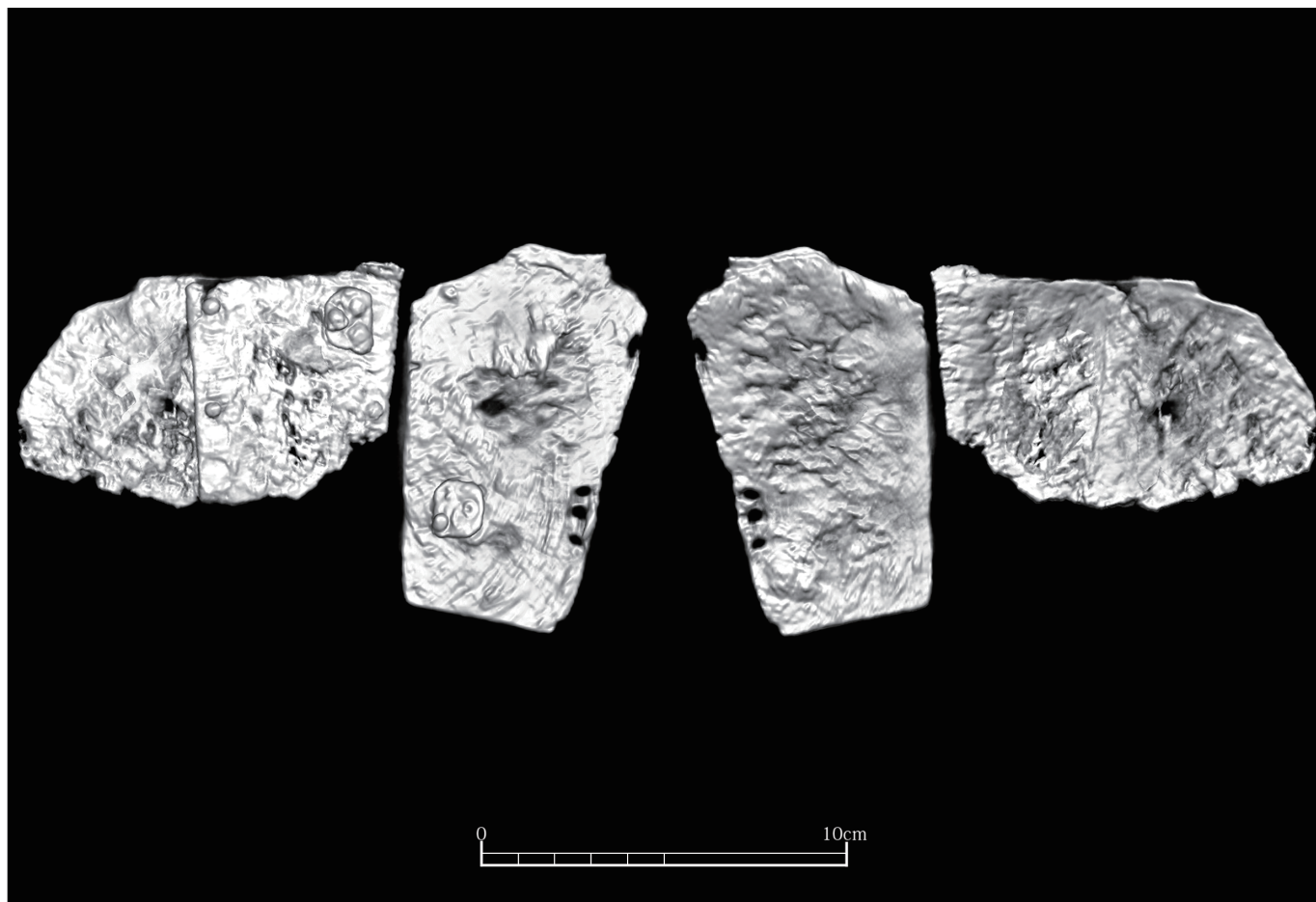




黒姫山古墳 T19号—b頸甲 右本体板（後面） X線透過







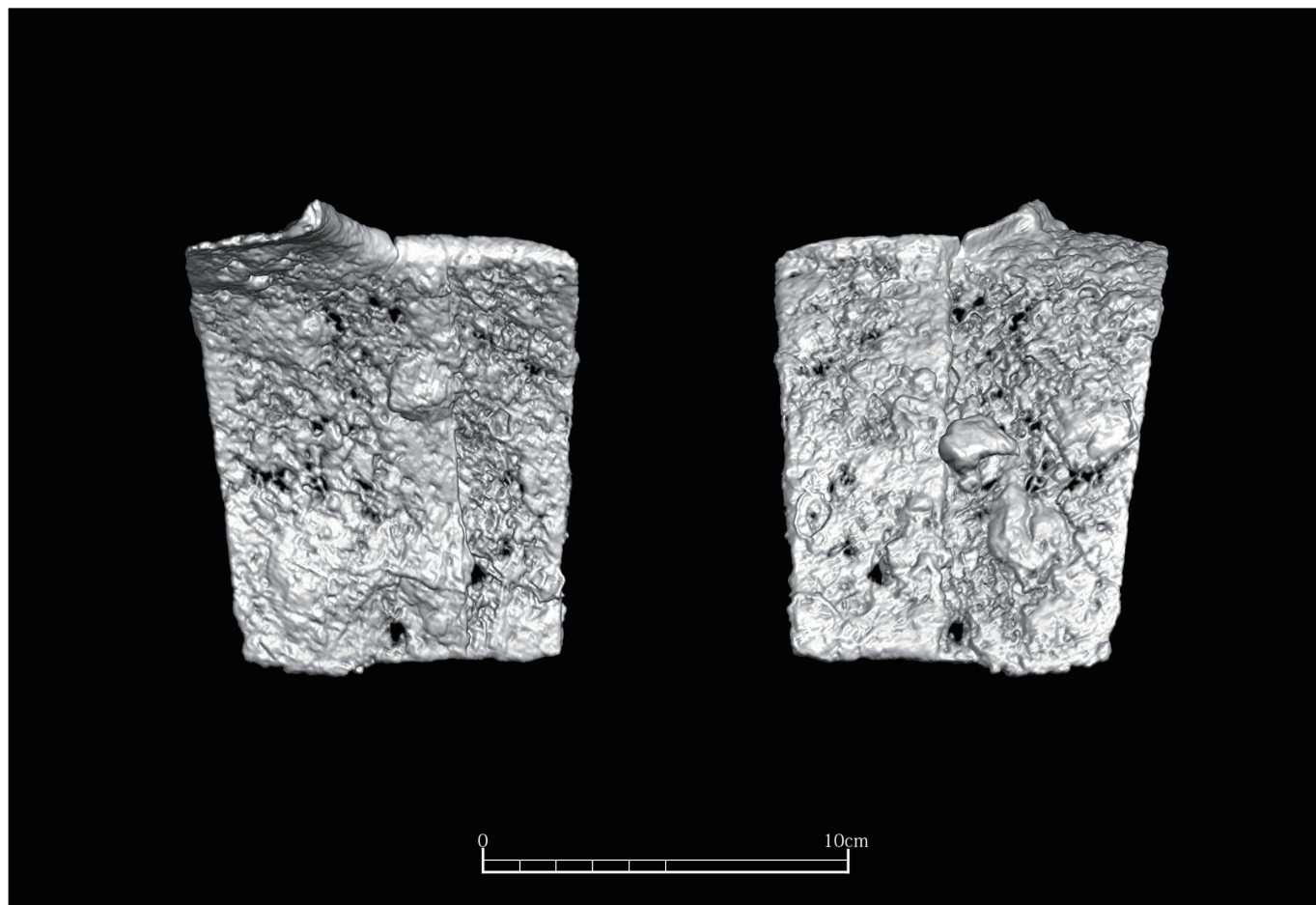


0 10cm

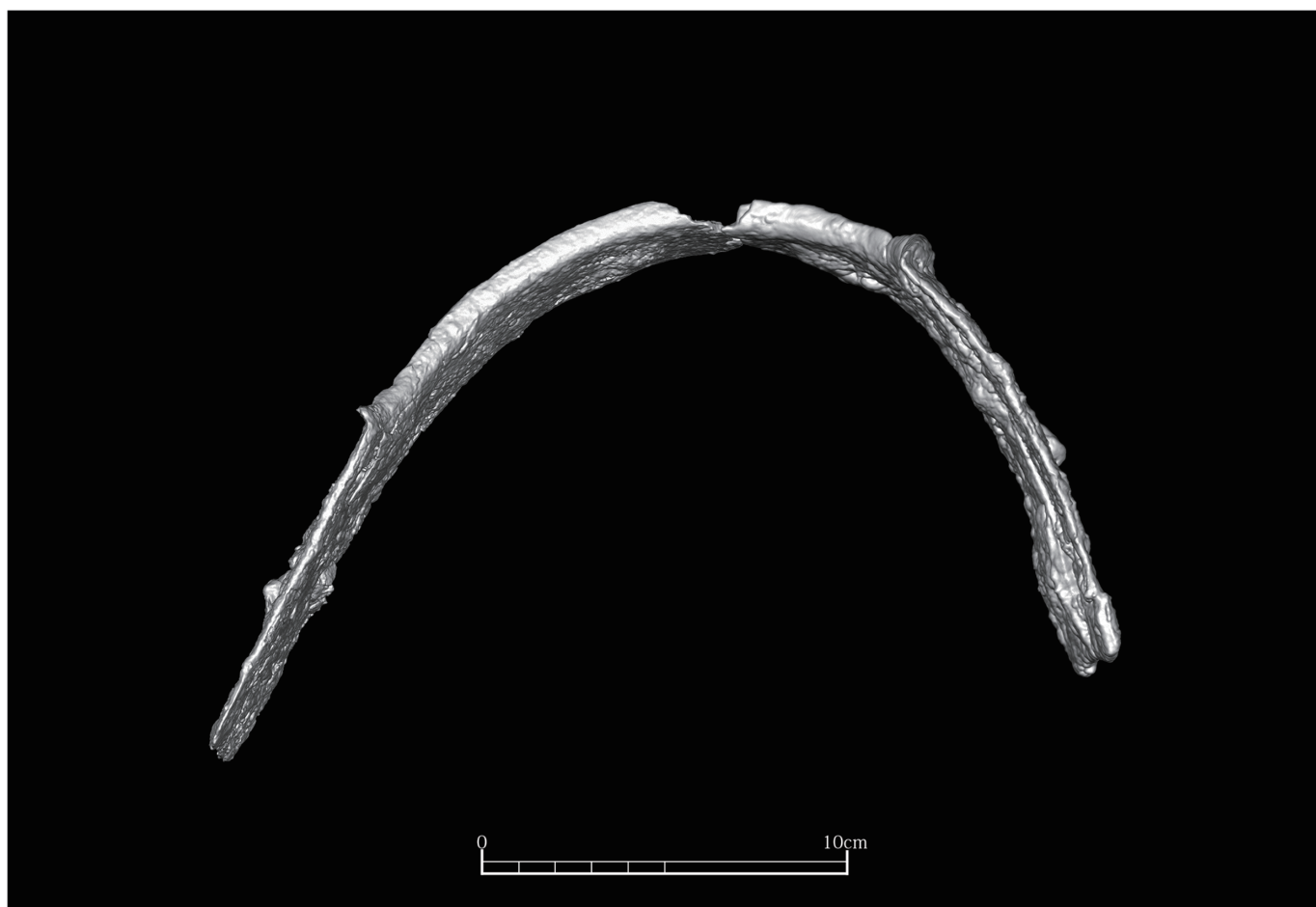


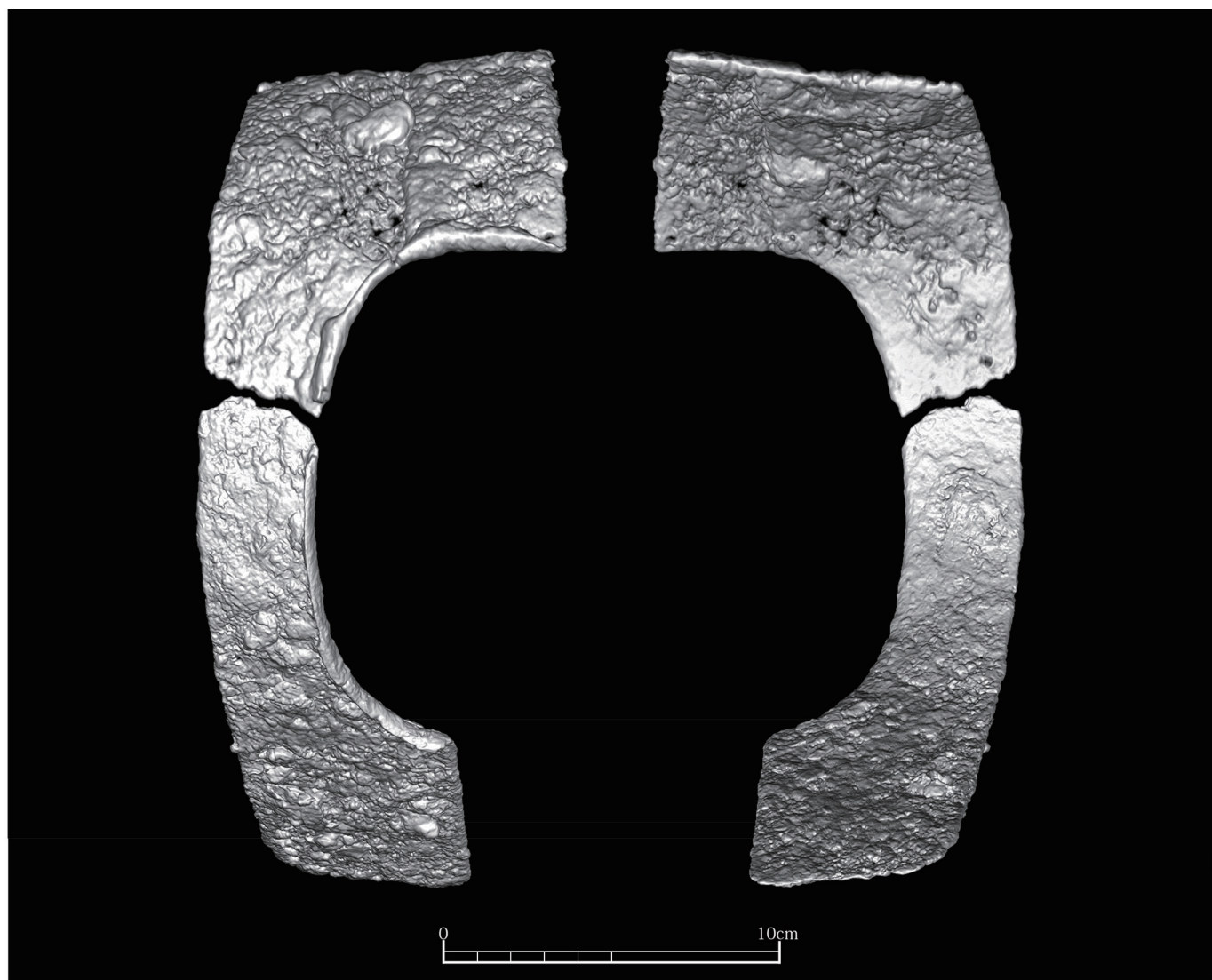


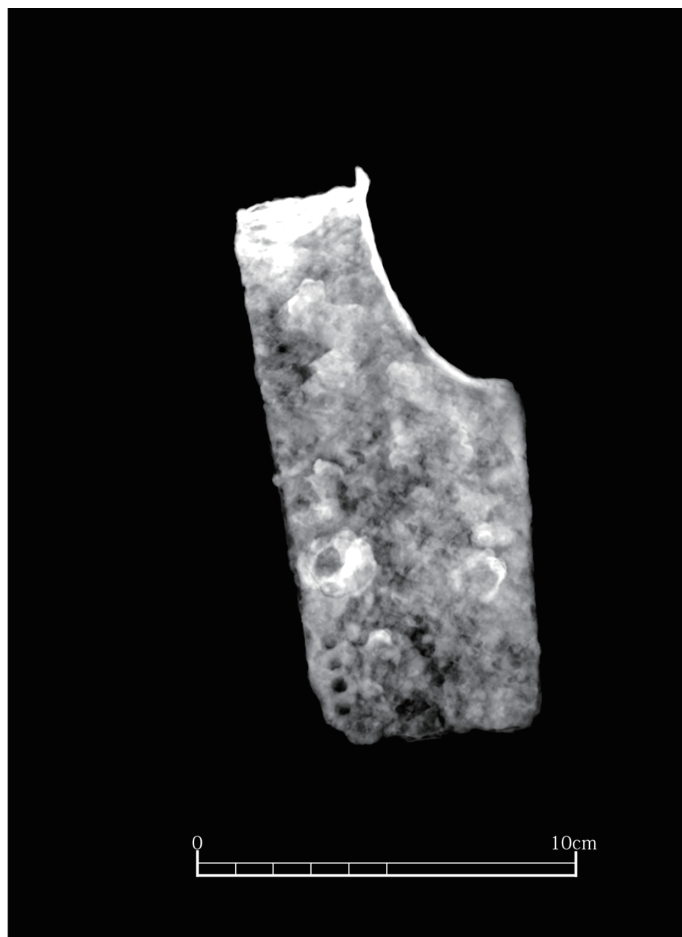
前面



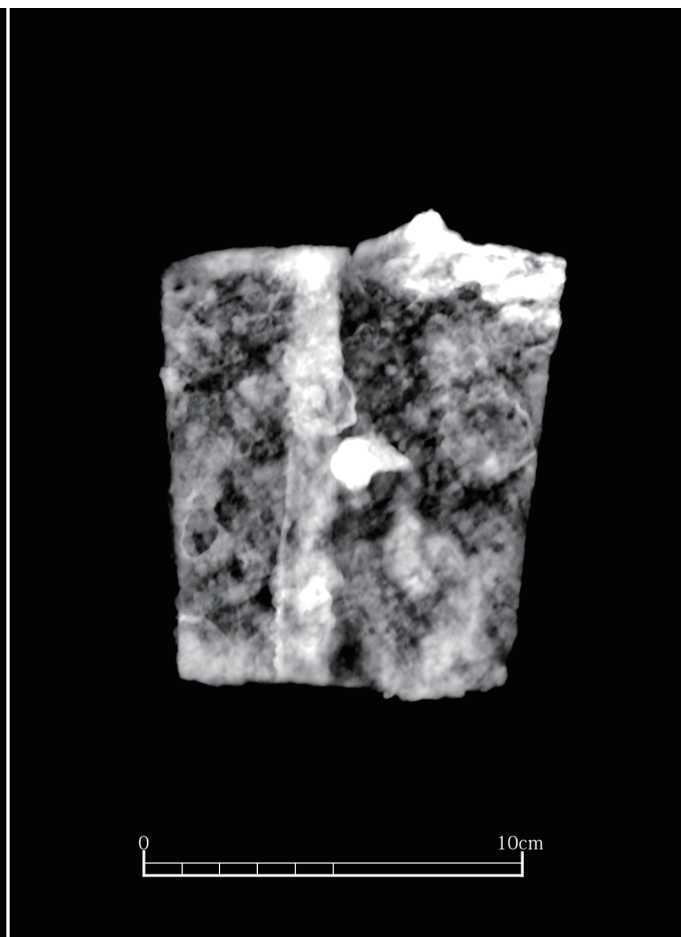
後面







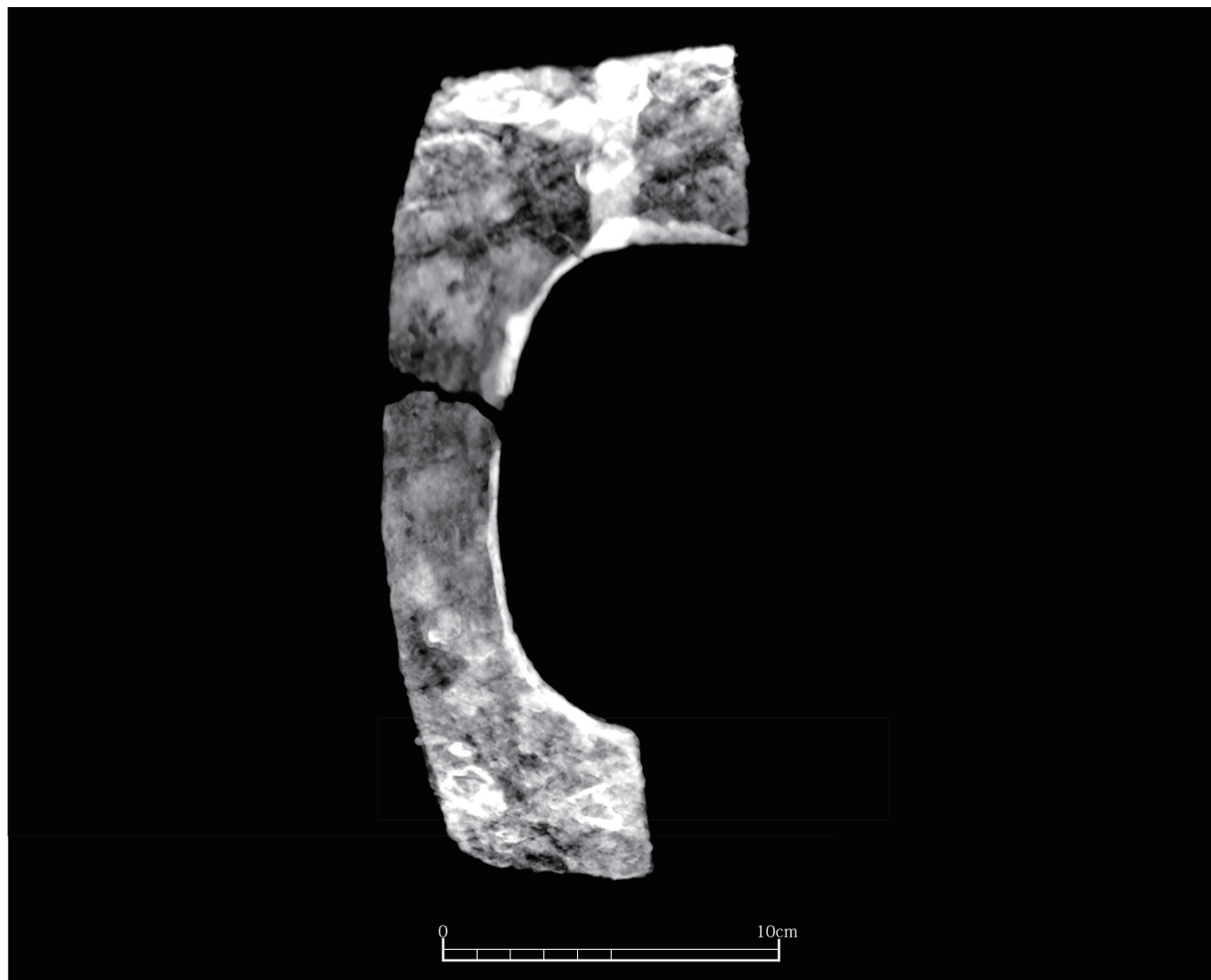
前面

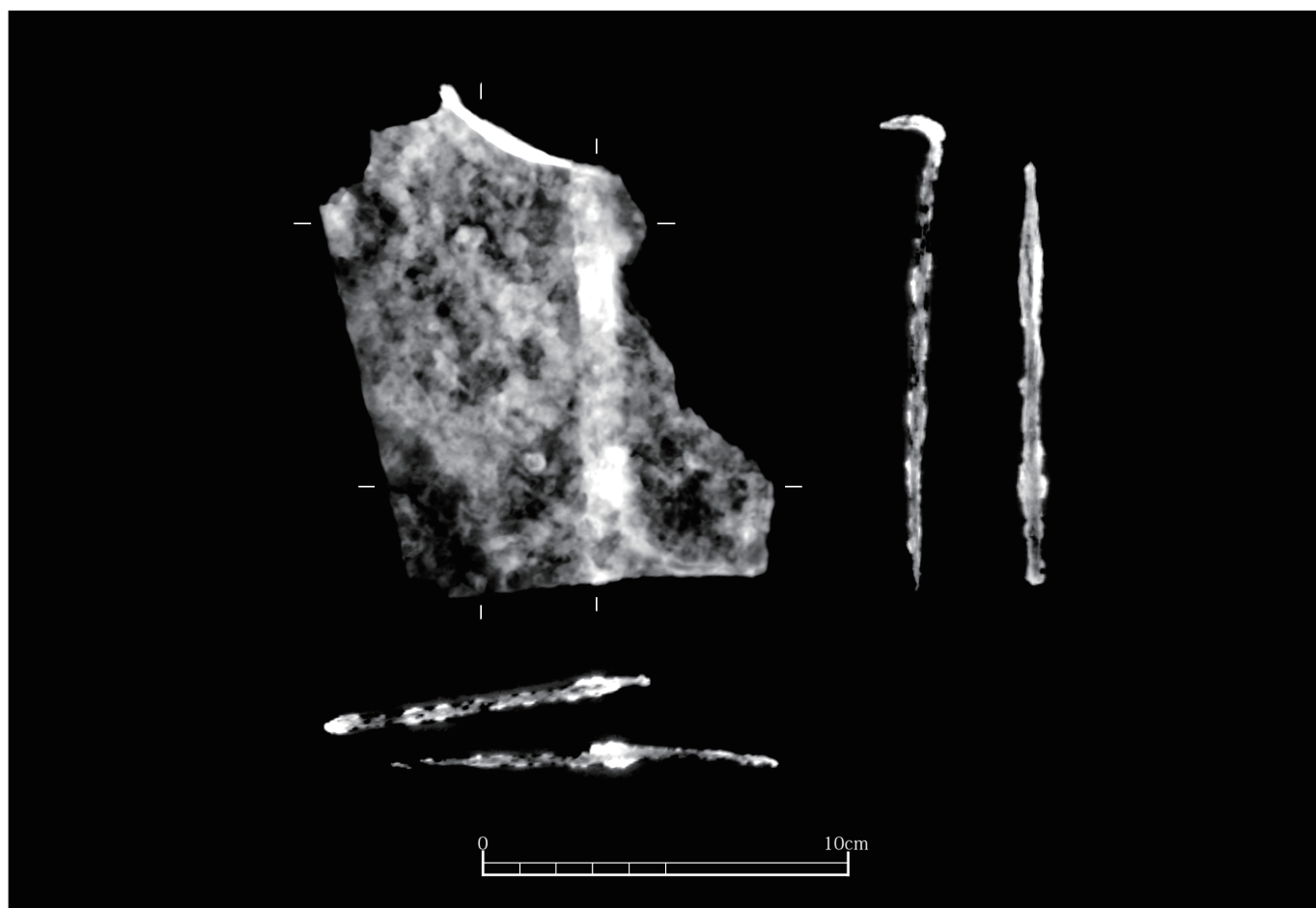
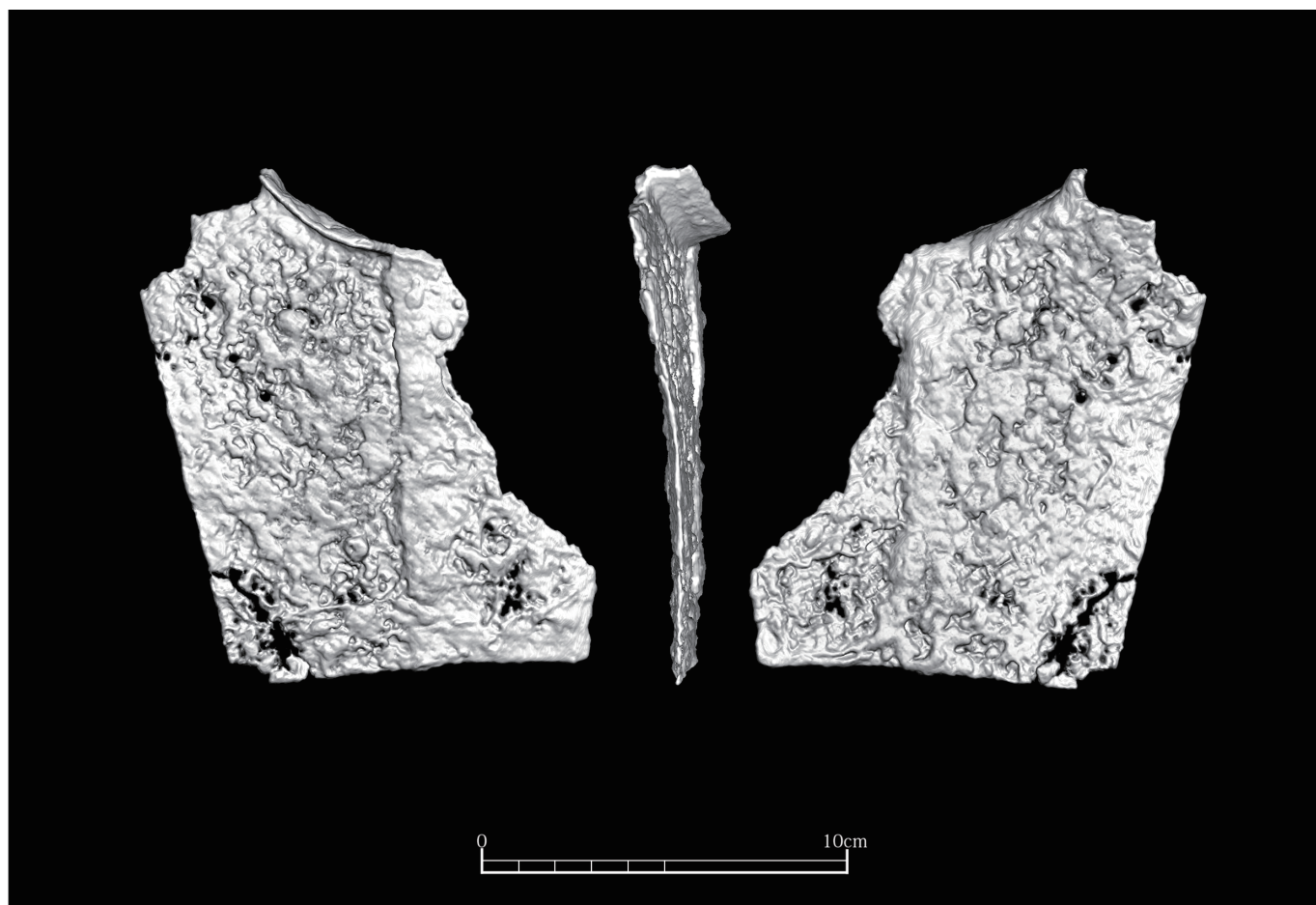


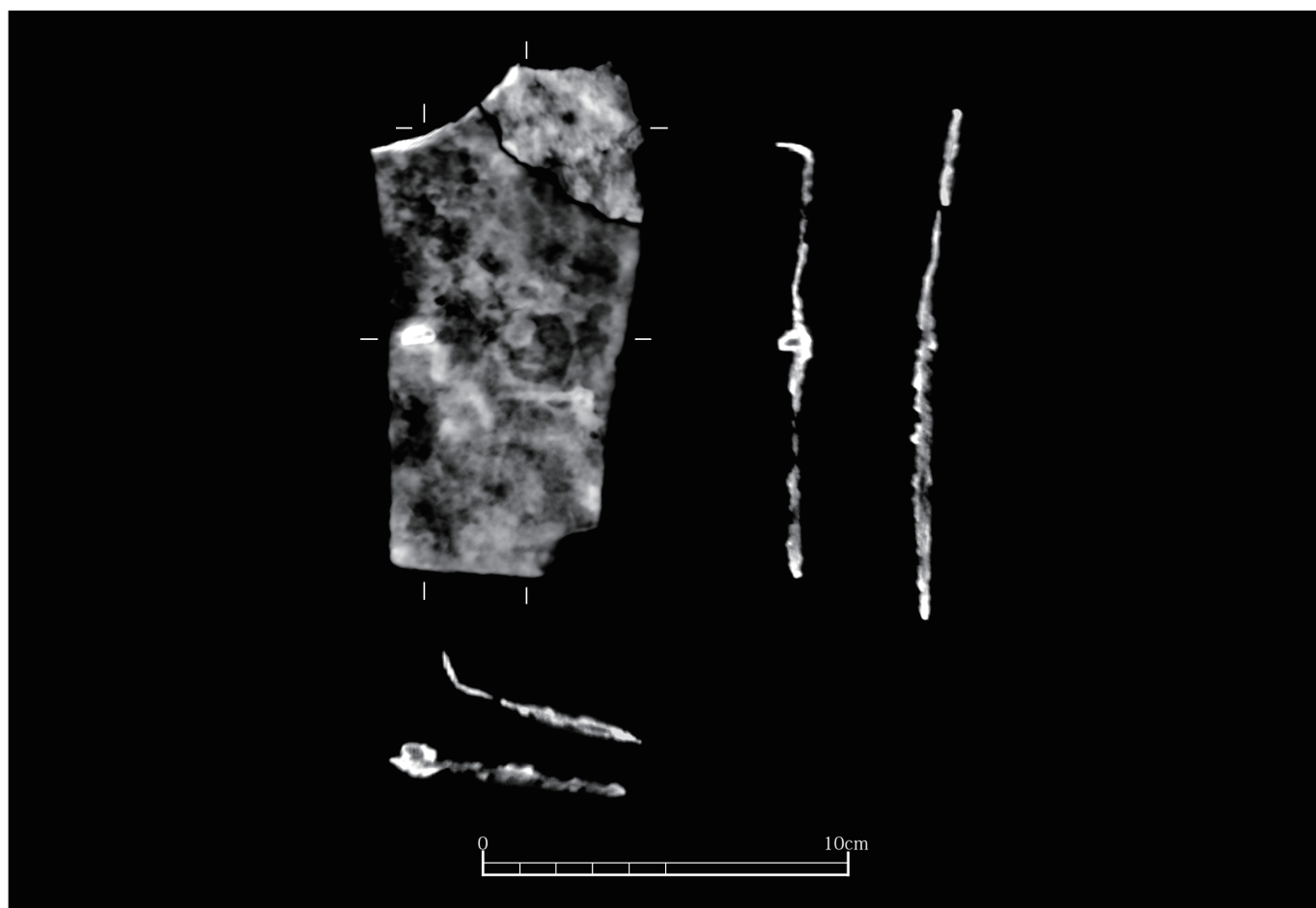
後面

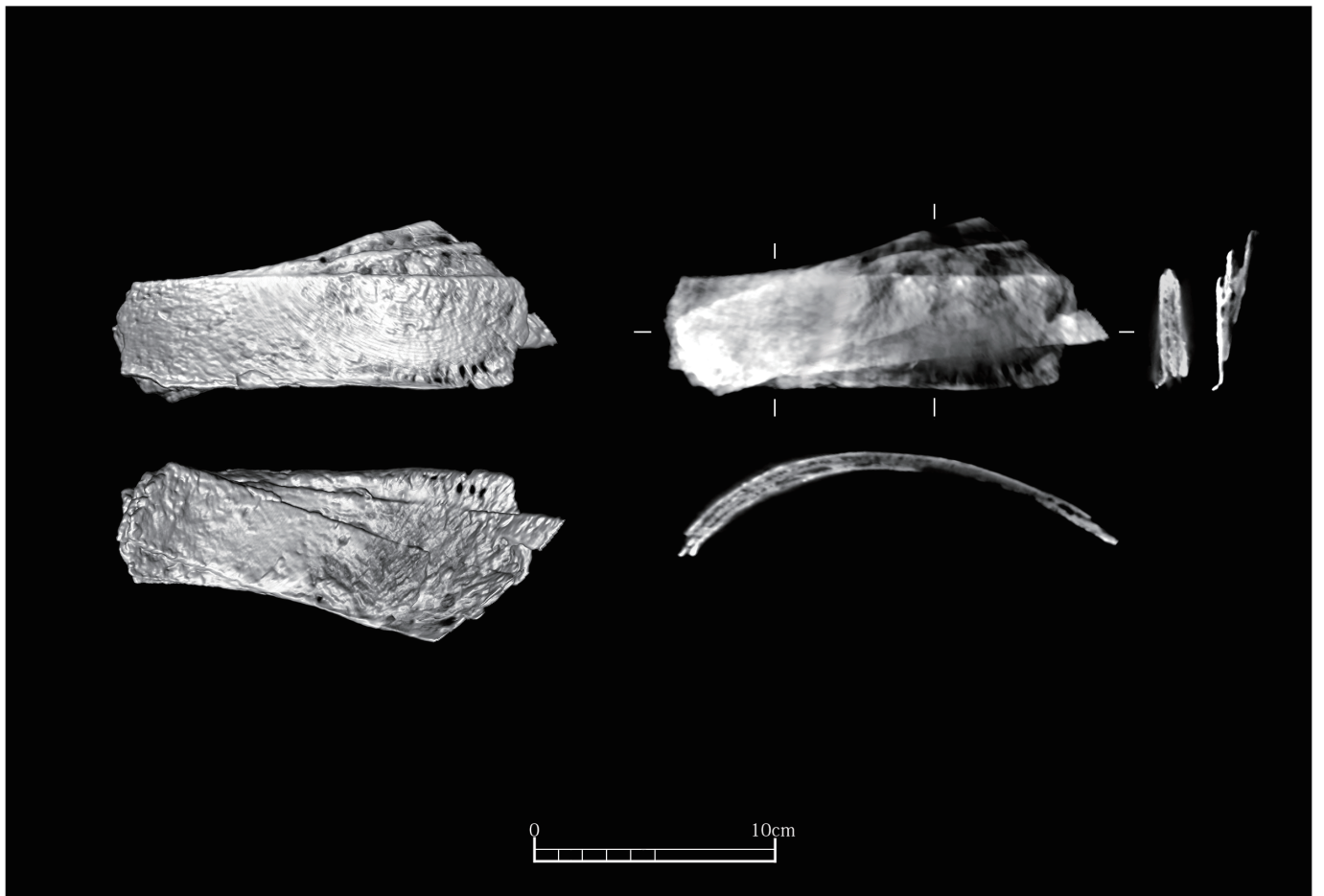
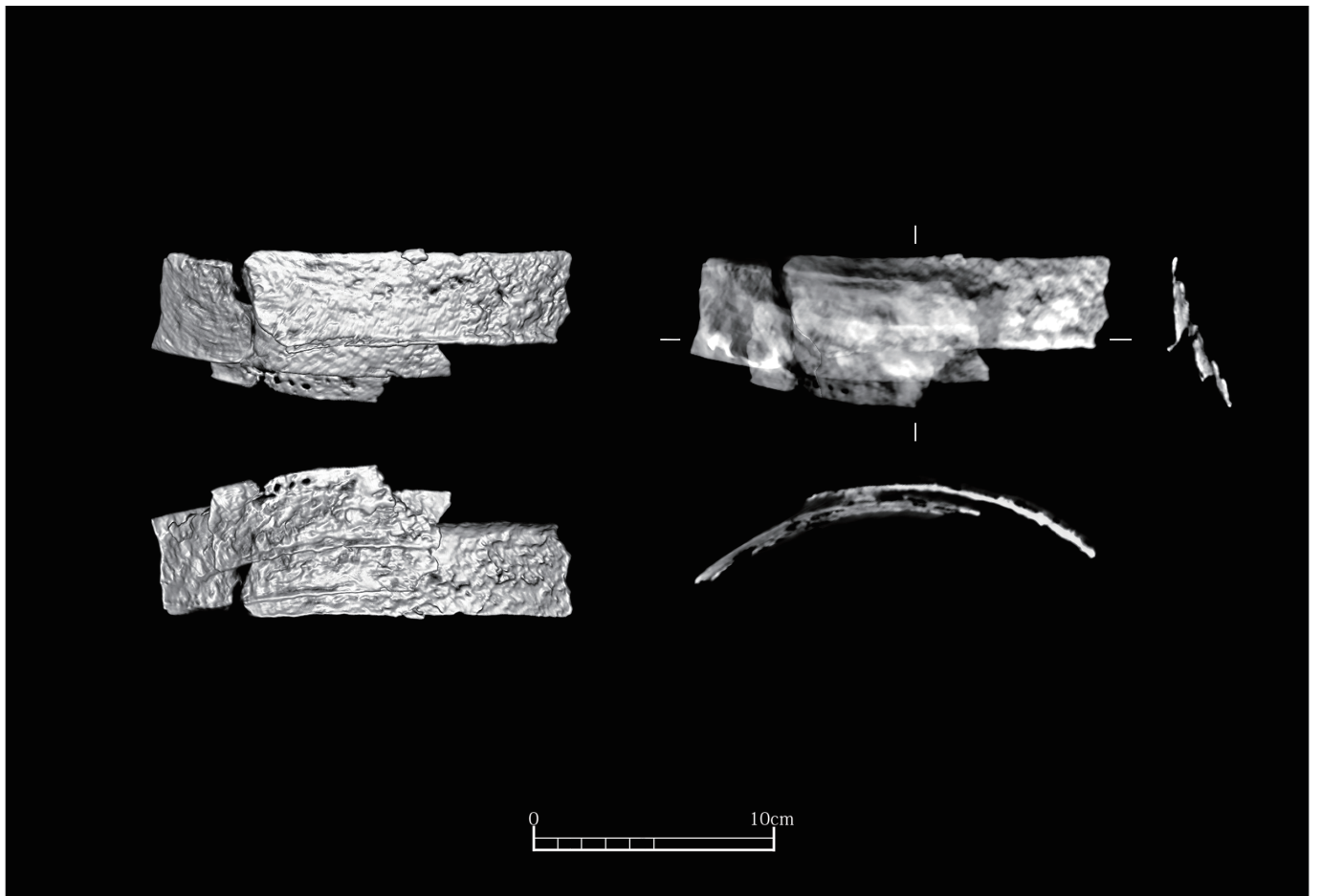


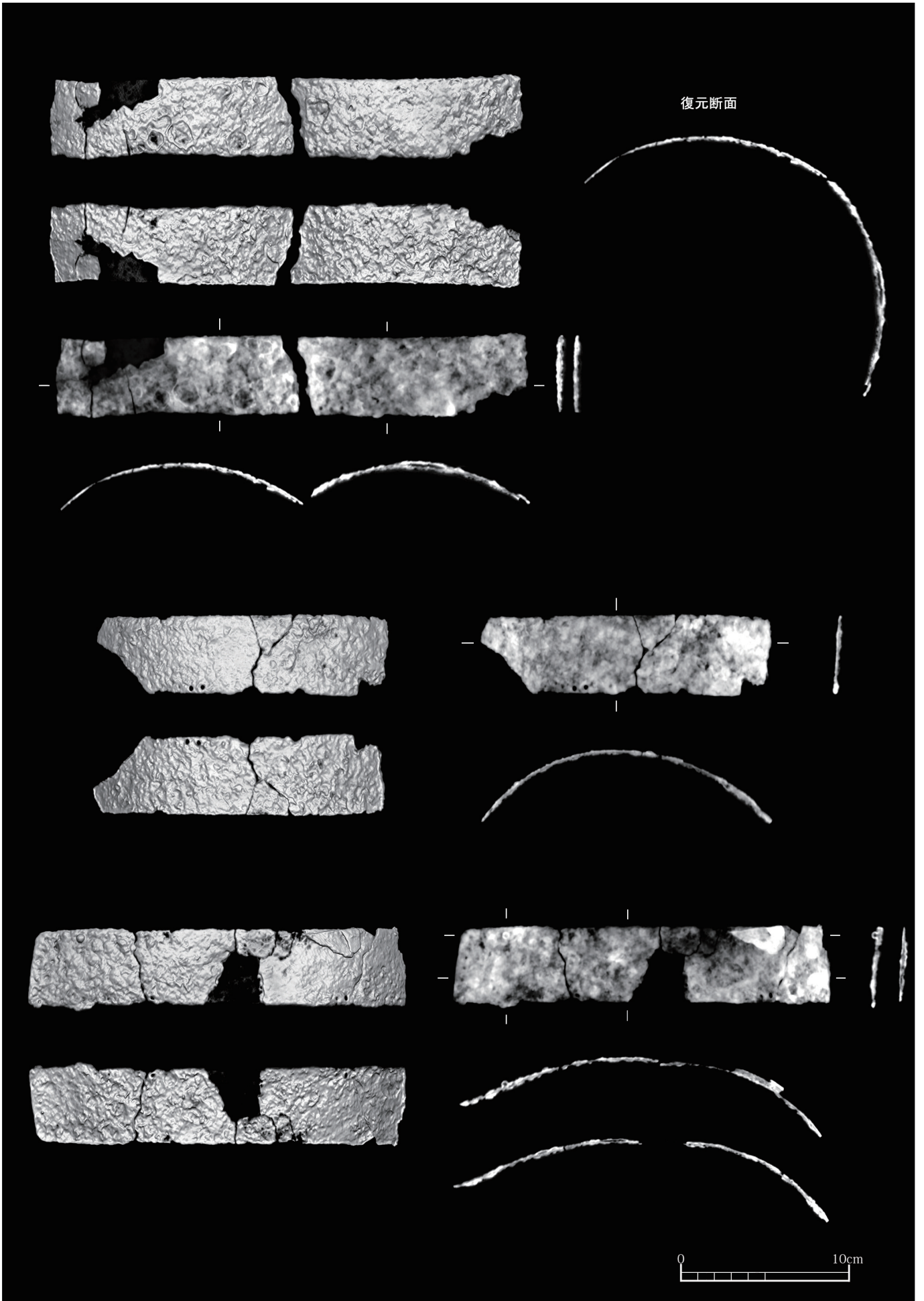
右側面



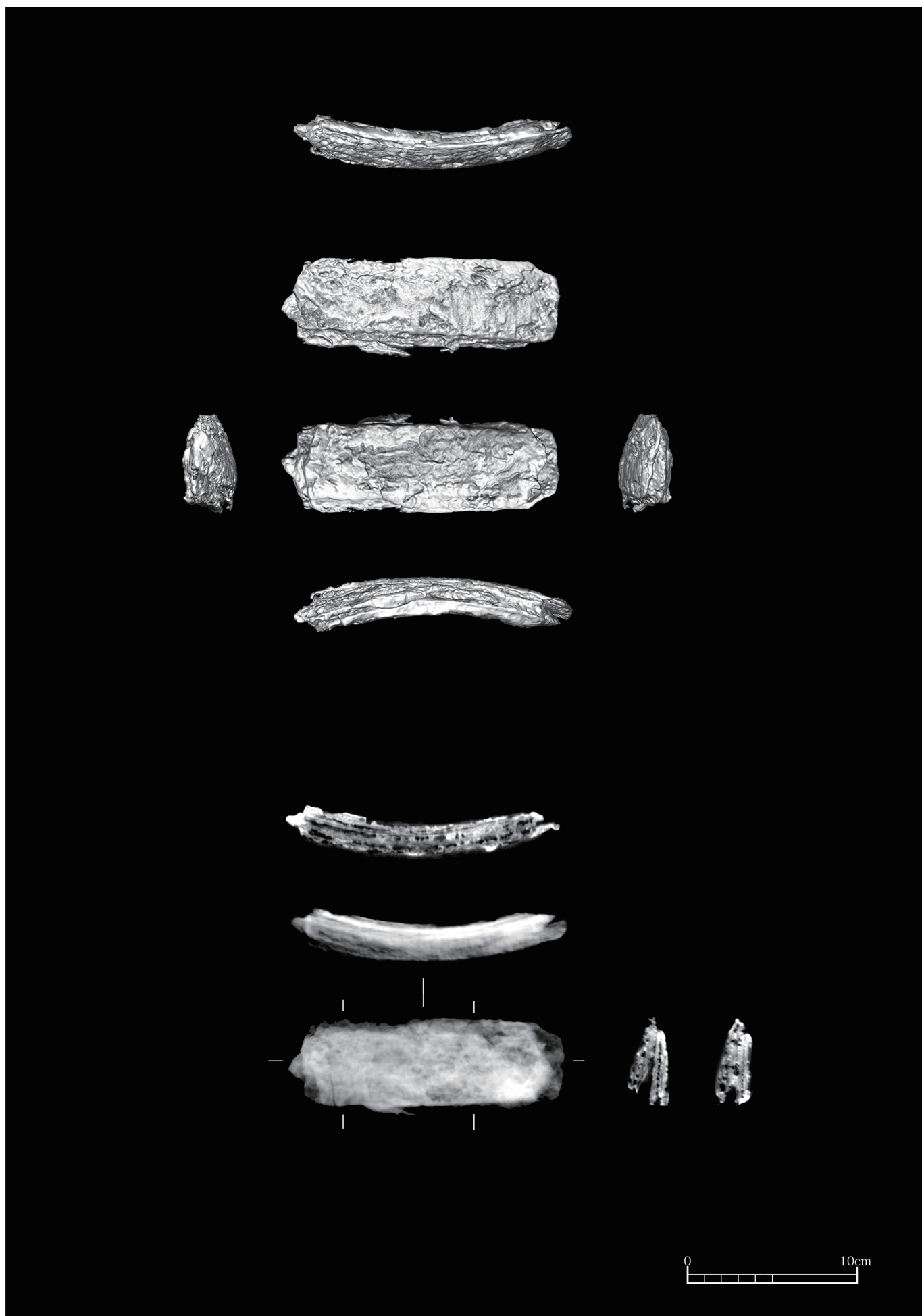






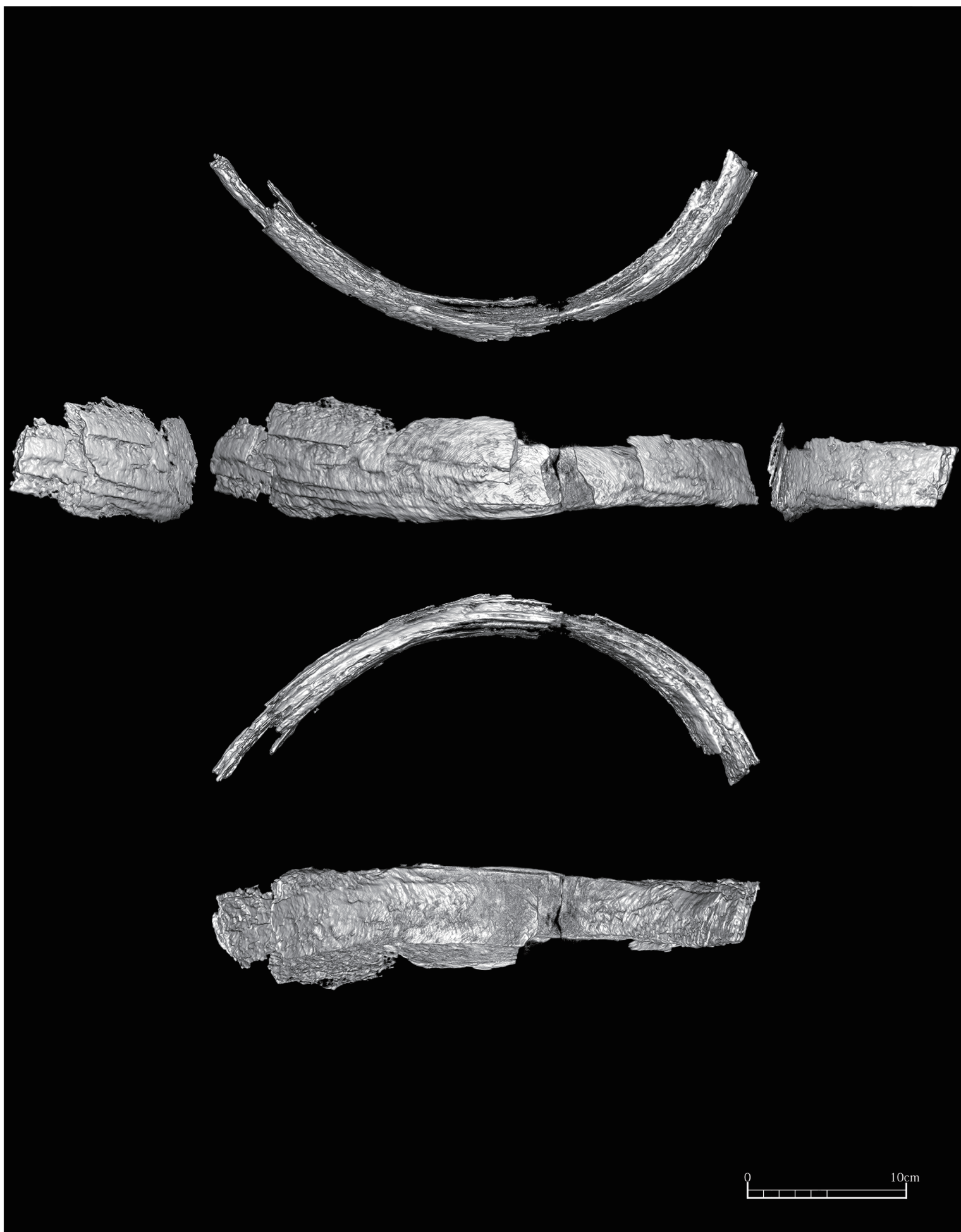






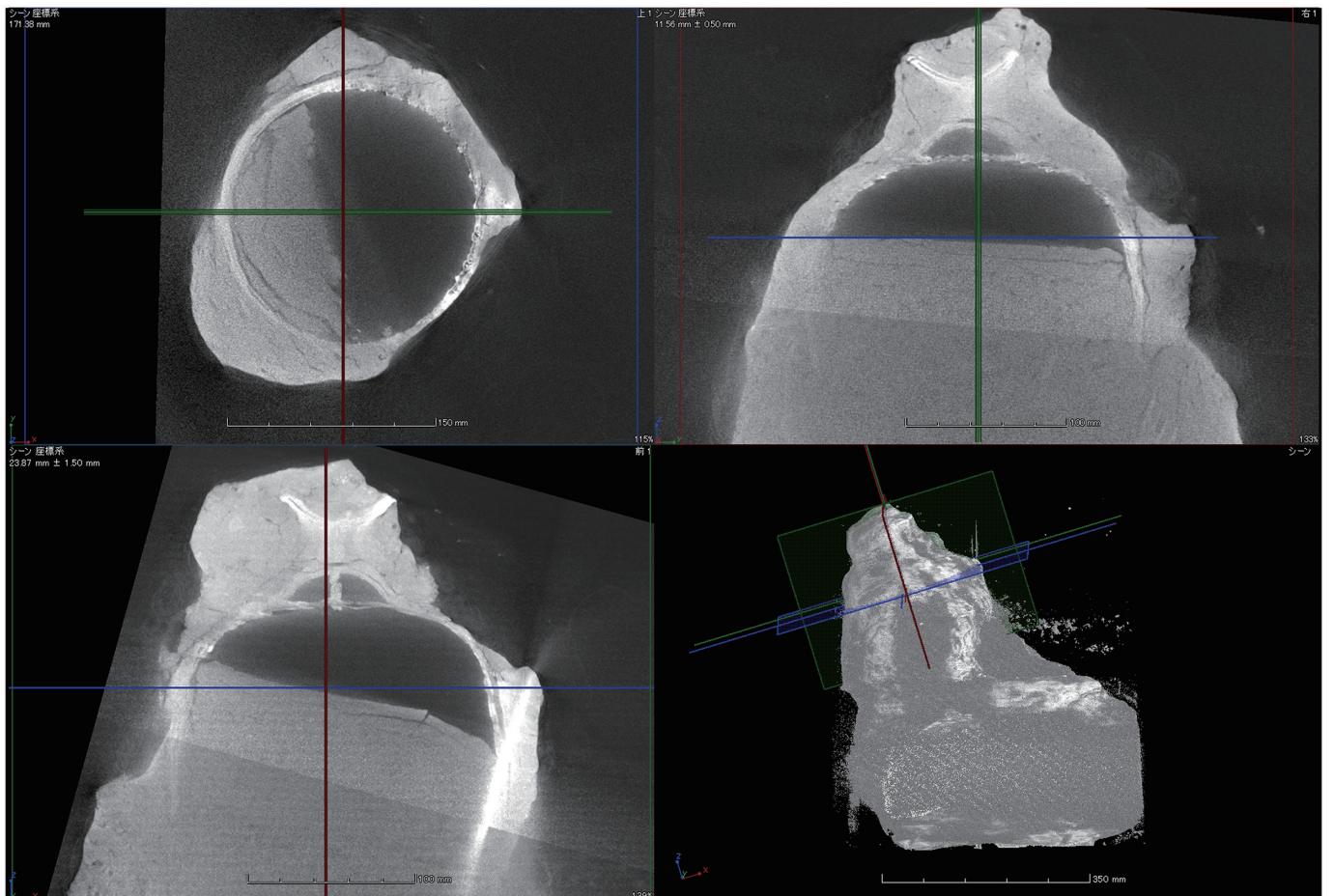
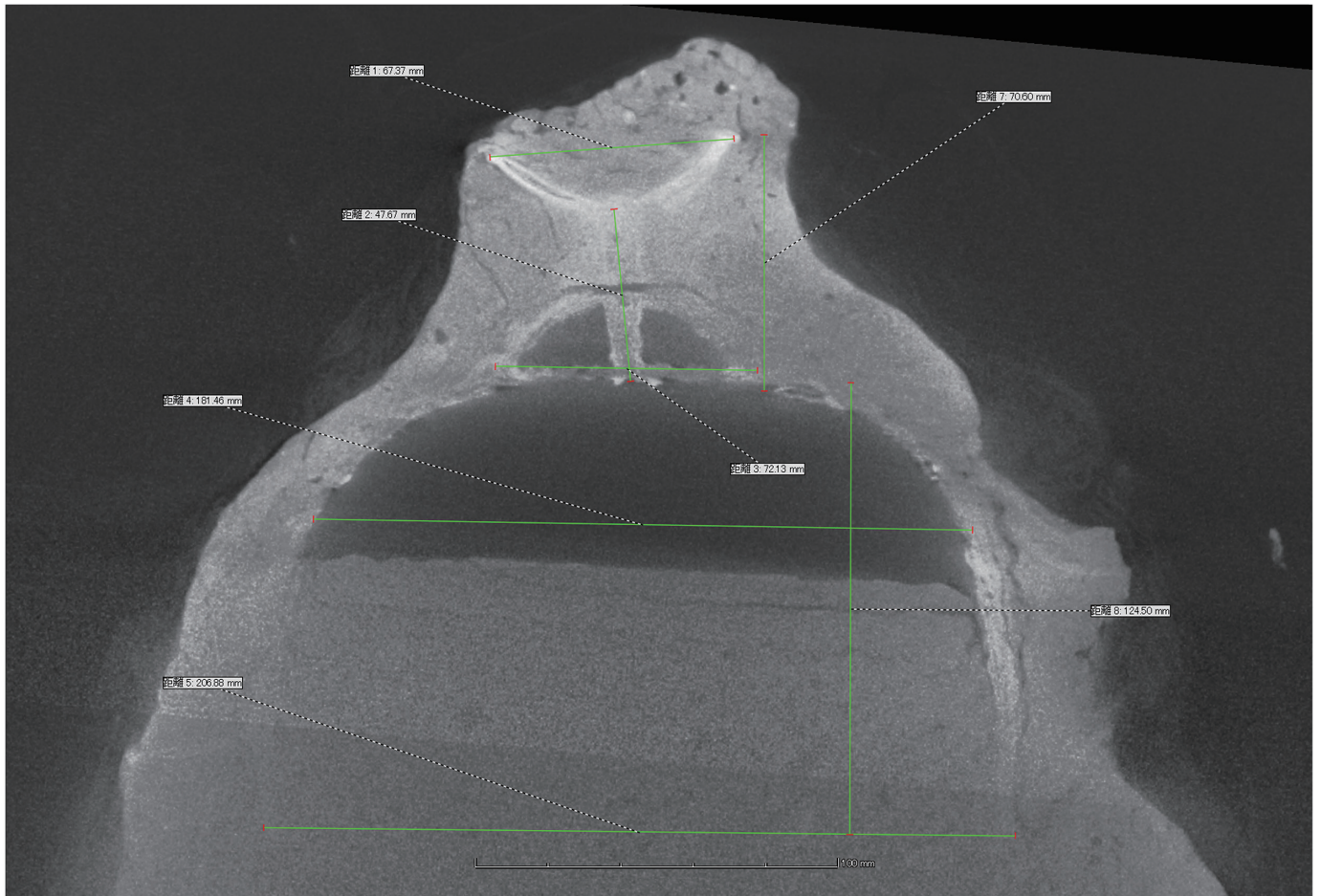


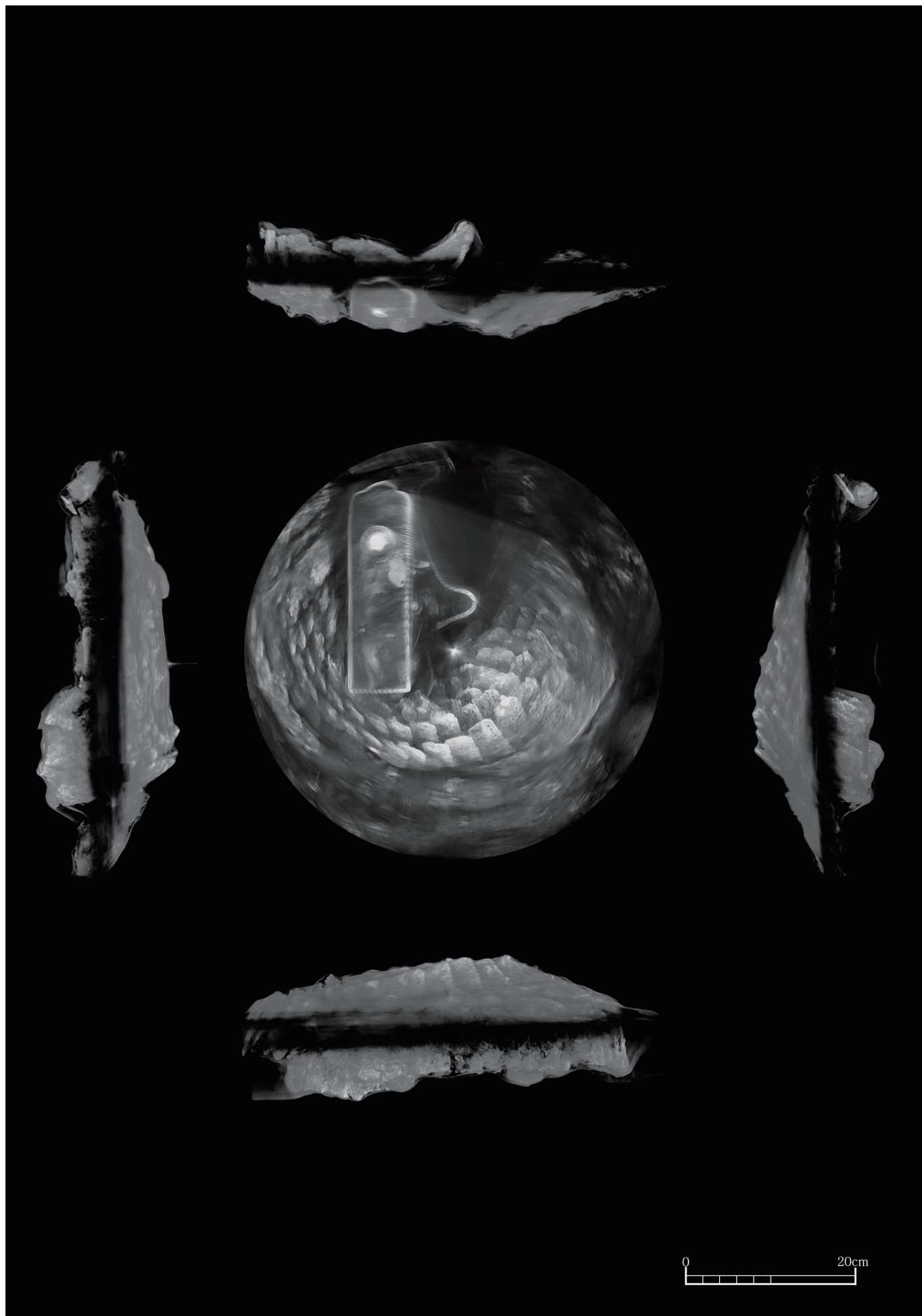




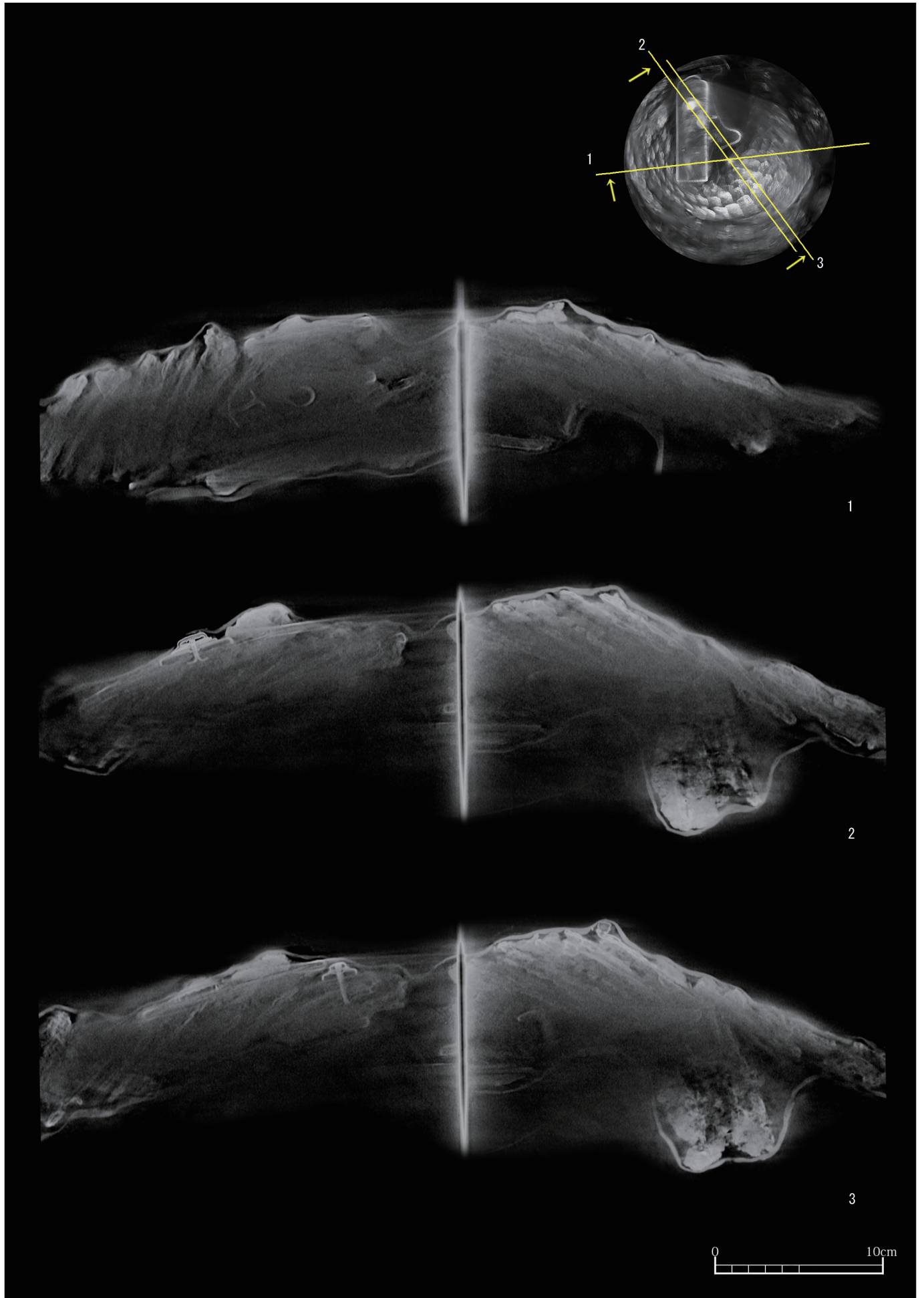


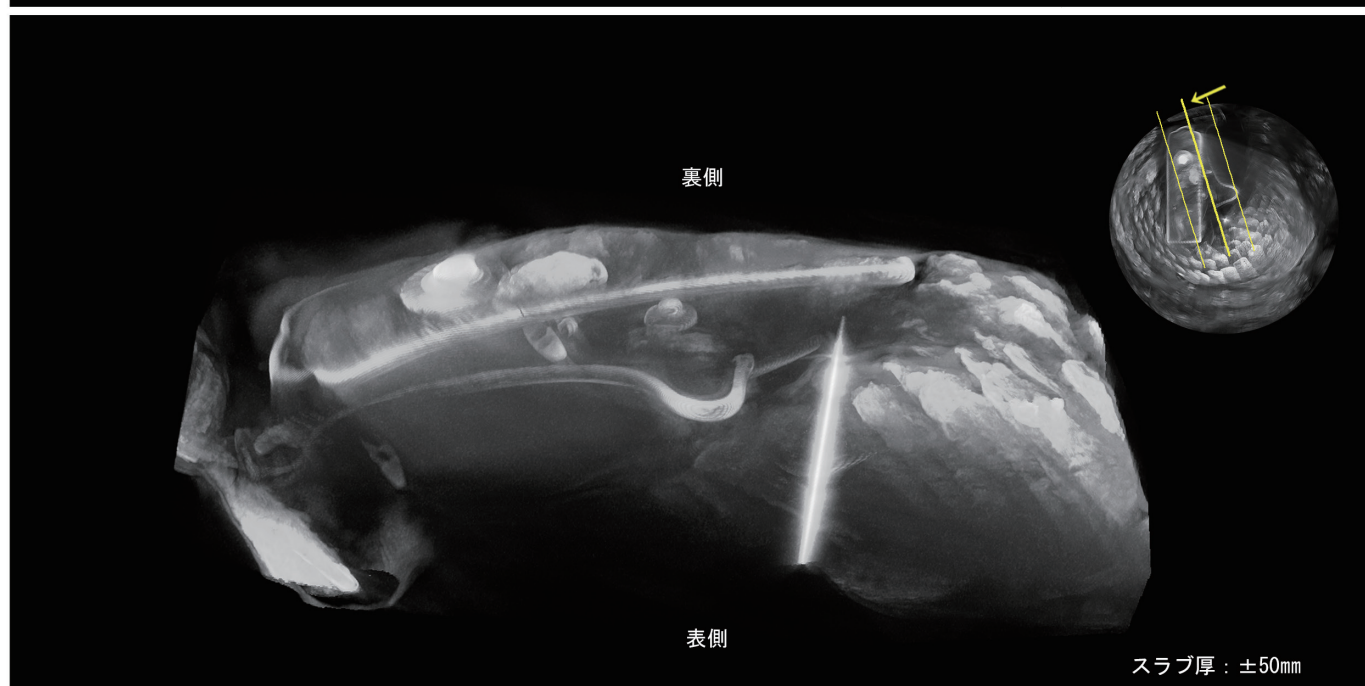
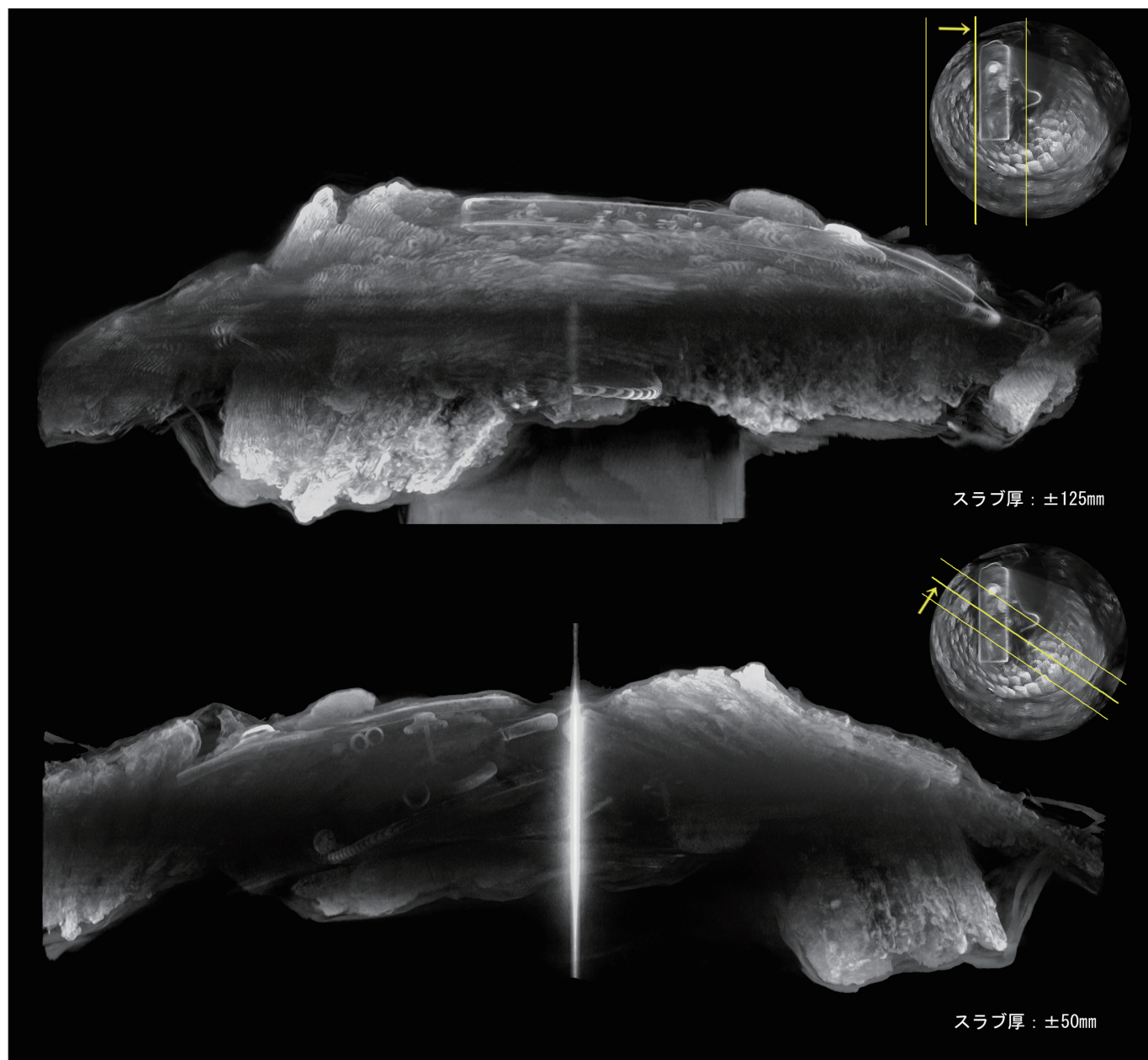
相作馬塚古墳 甲冑取り上げ状況

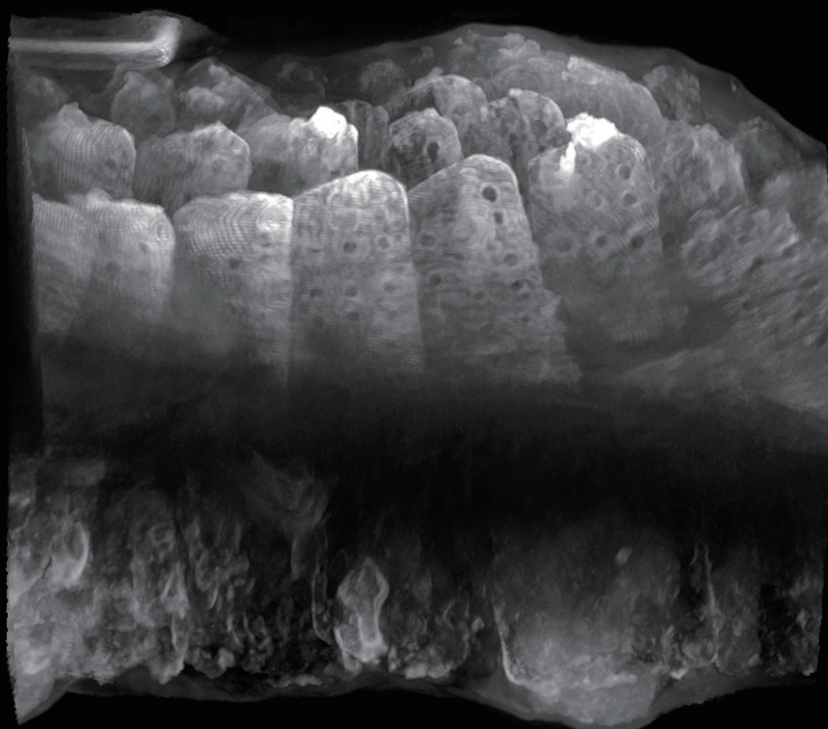
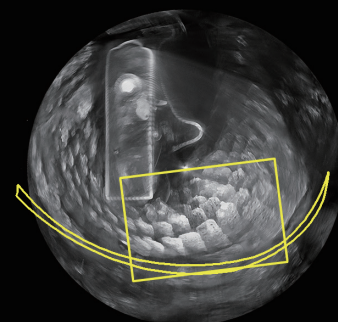




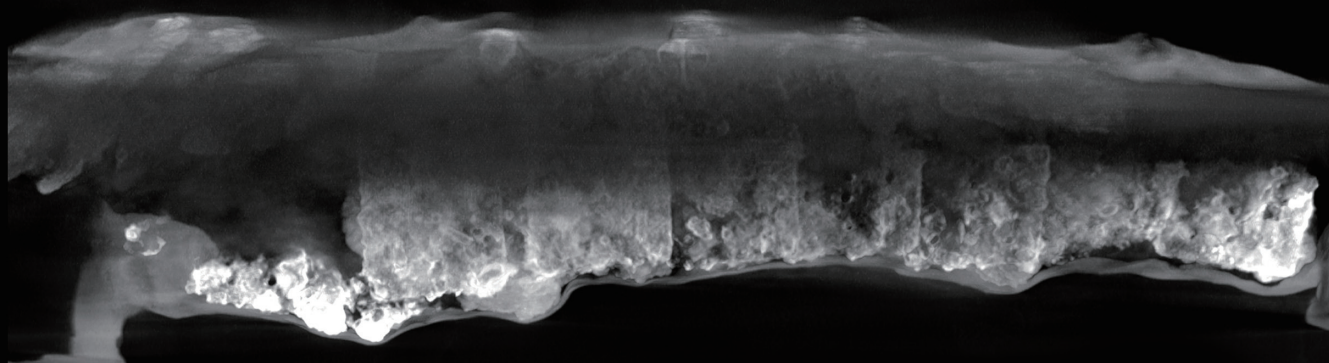
上面画像は2Dスラブ厚調整画像 スラブ厚：±5mm



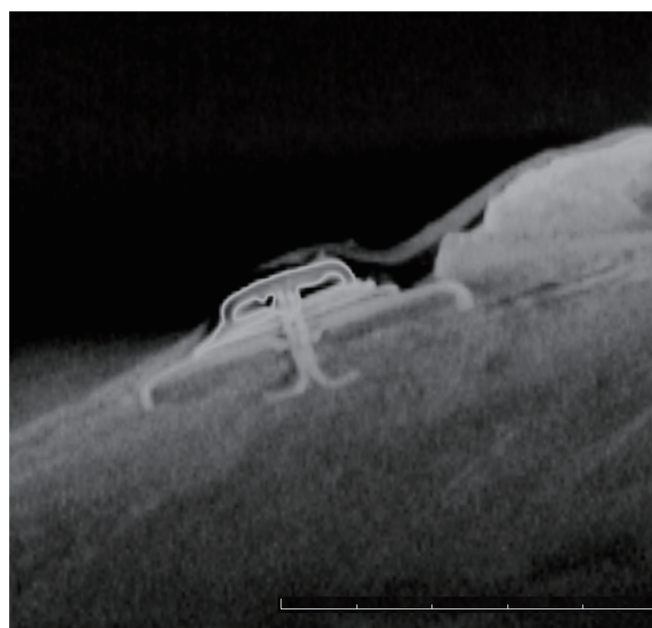
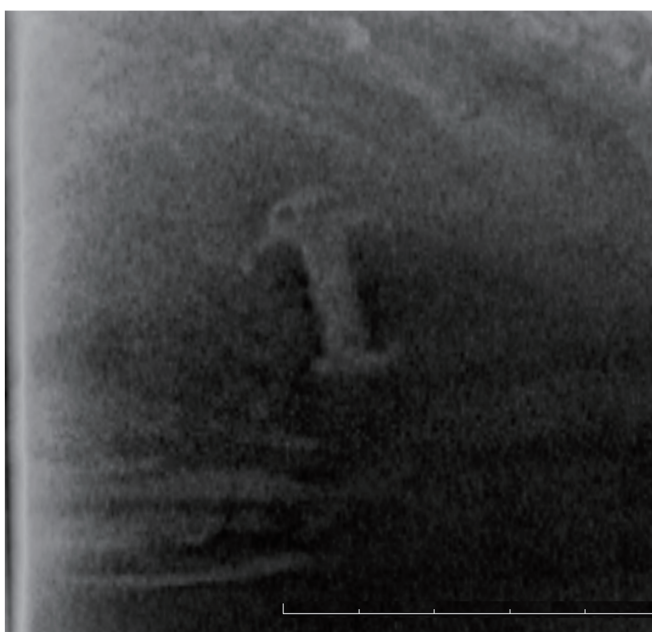
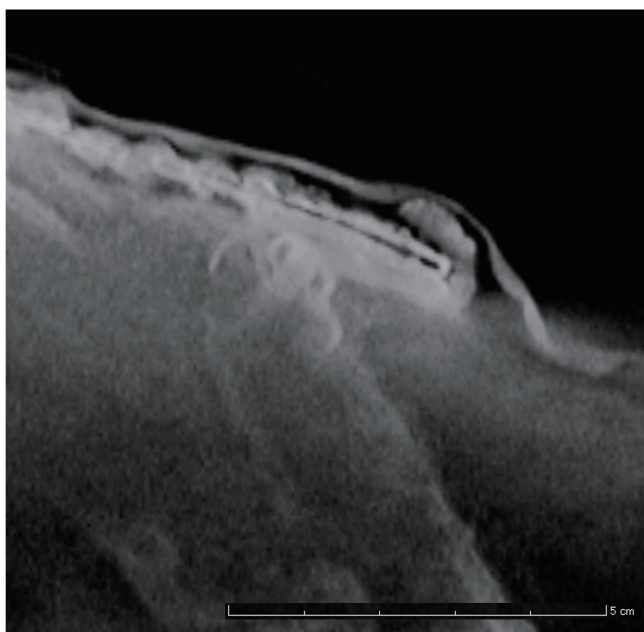
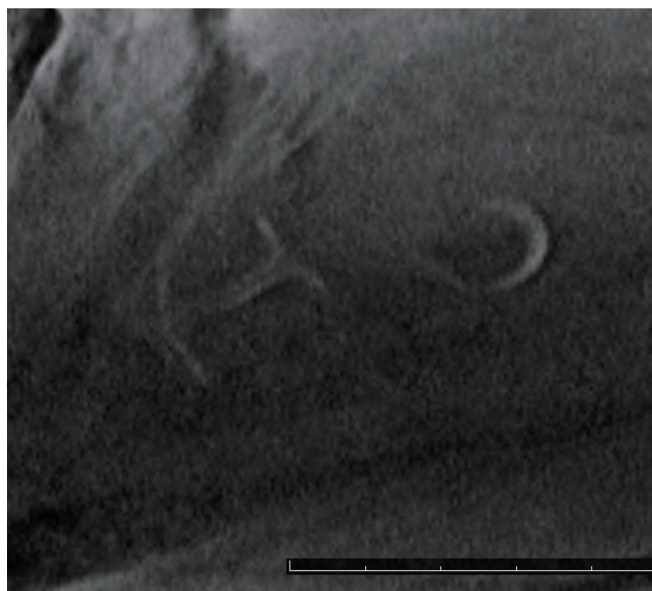
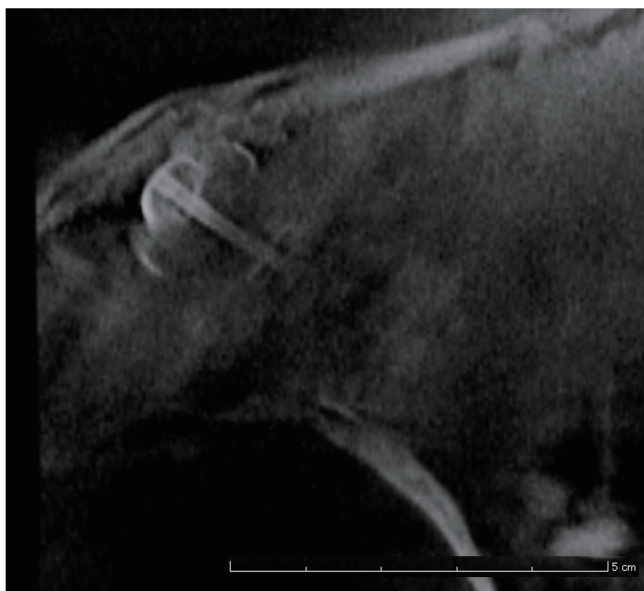


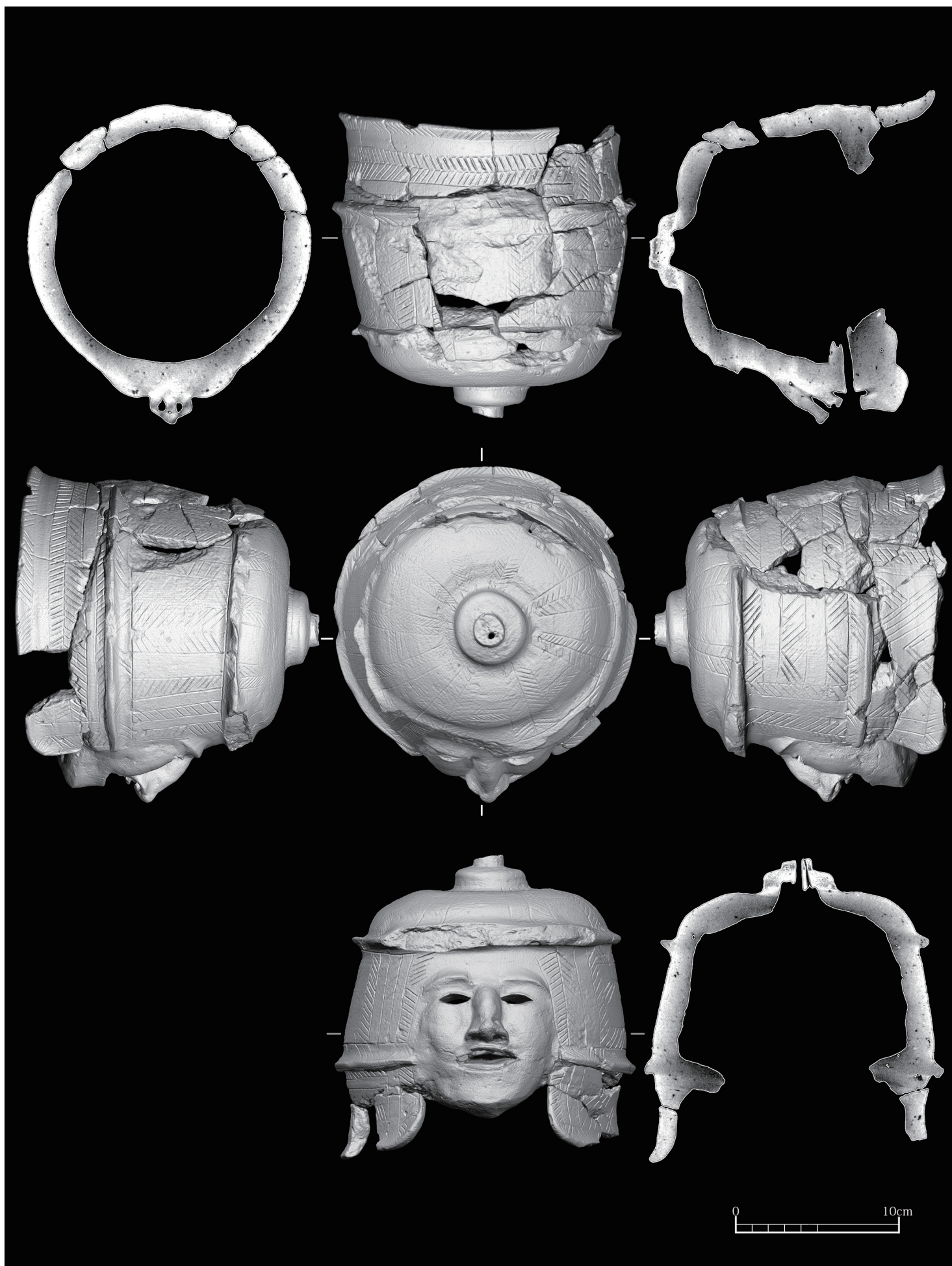


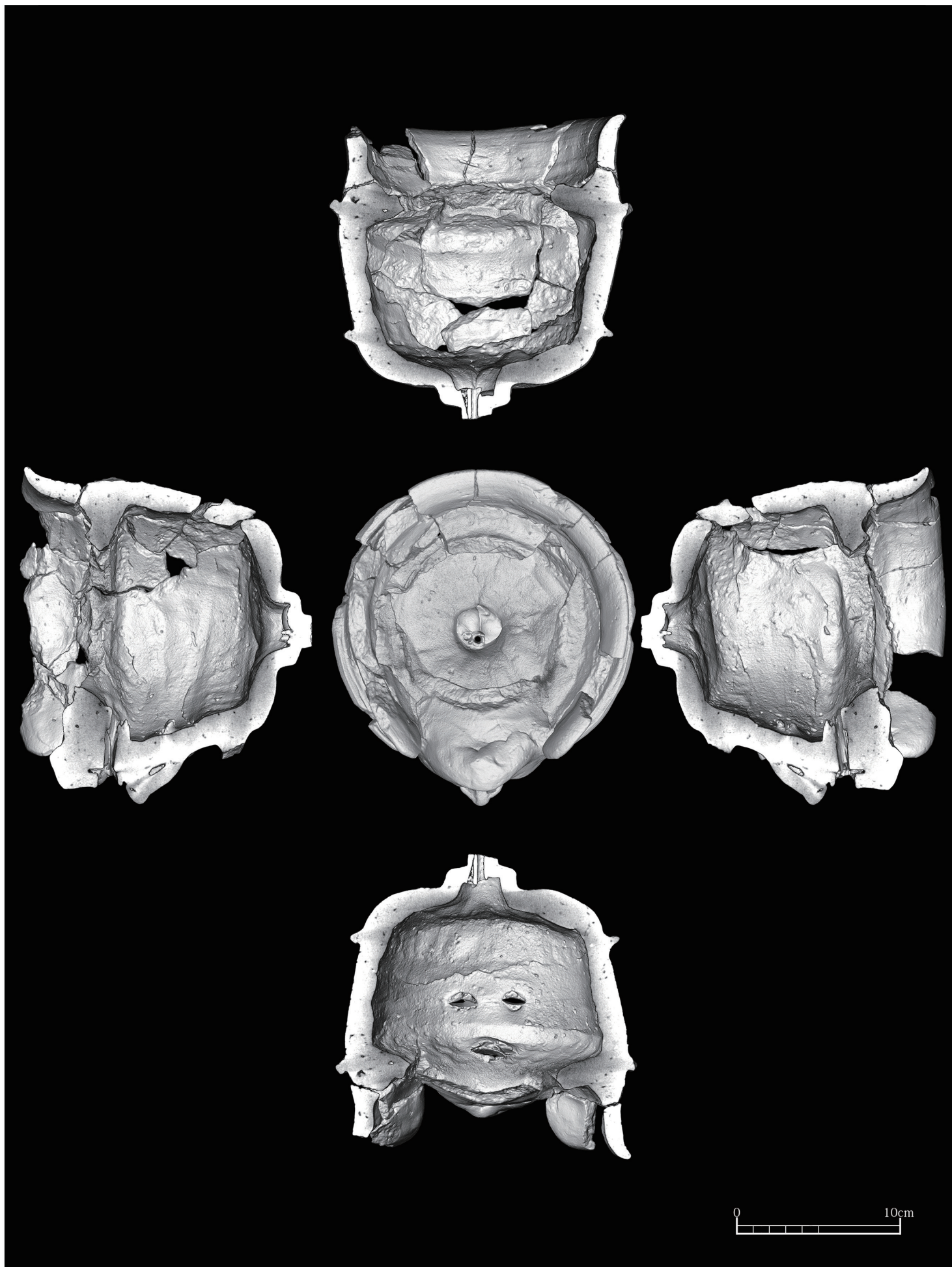
スラブ厚 : $\pm 40\text{mm}$

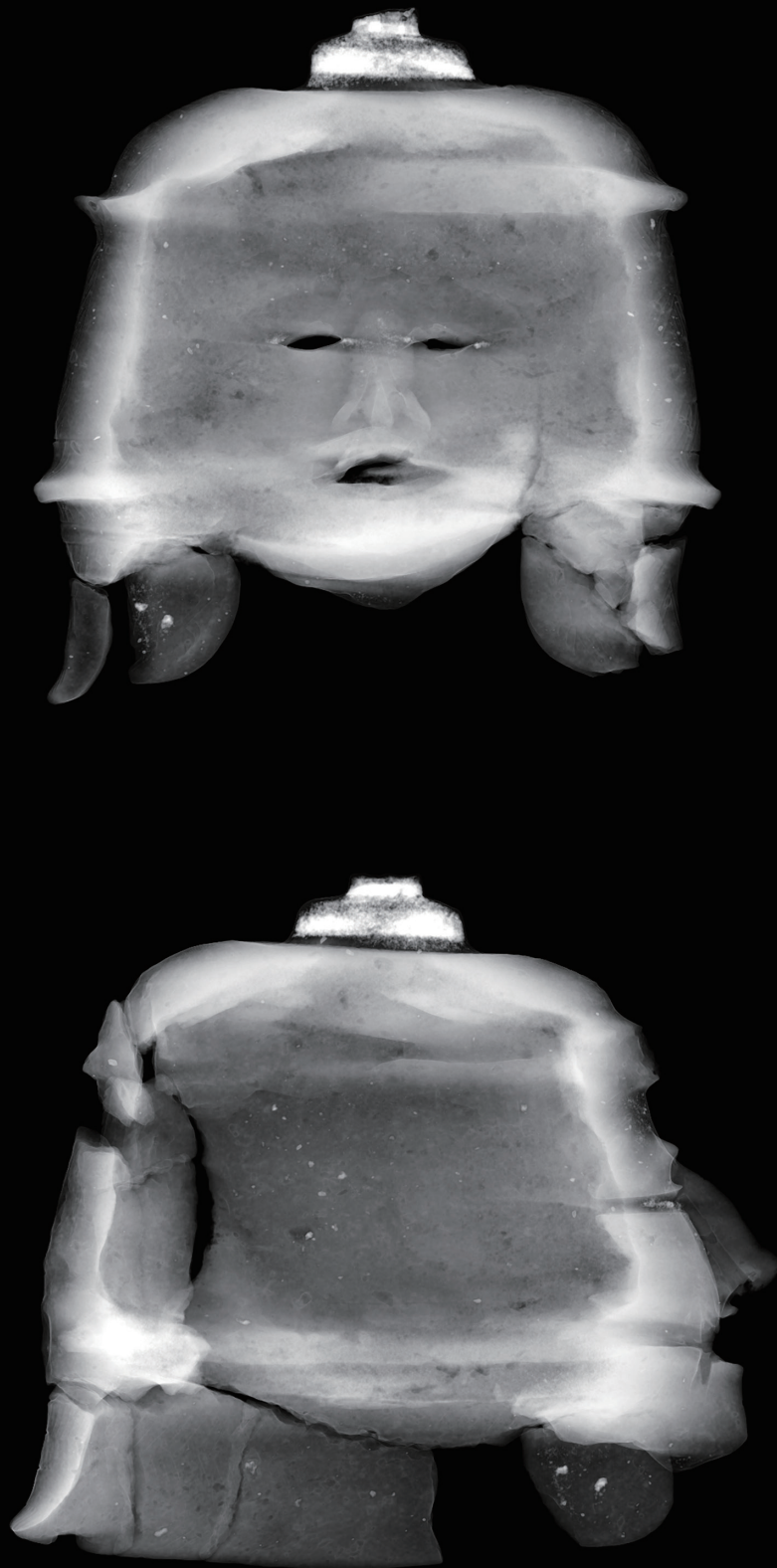


スラブ厚 : $\pm 50\text{mm}$



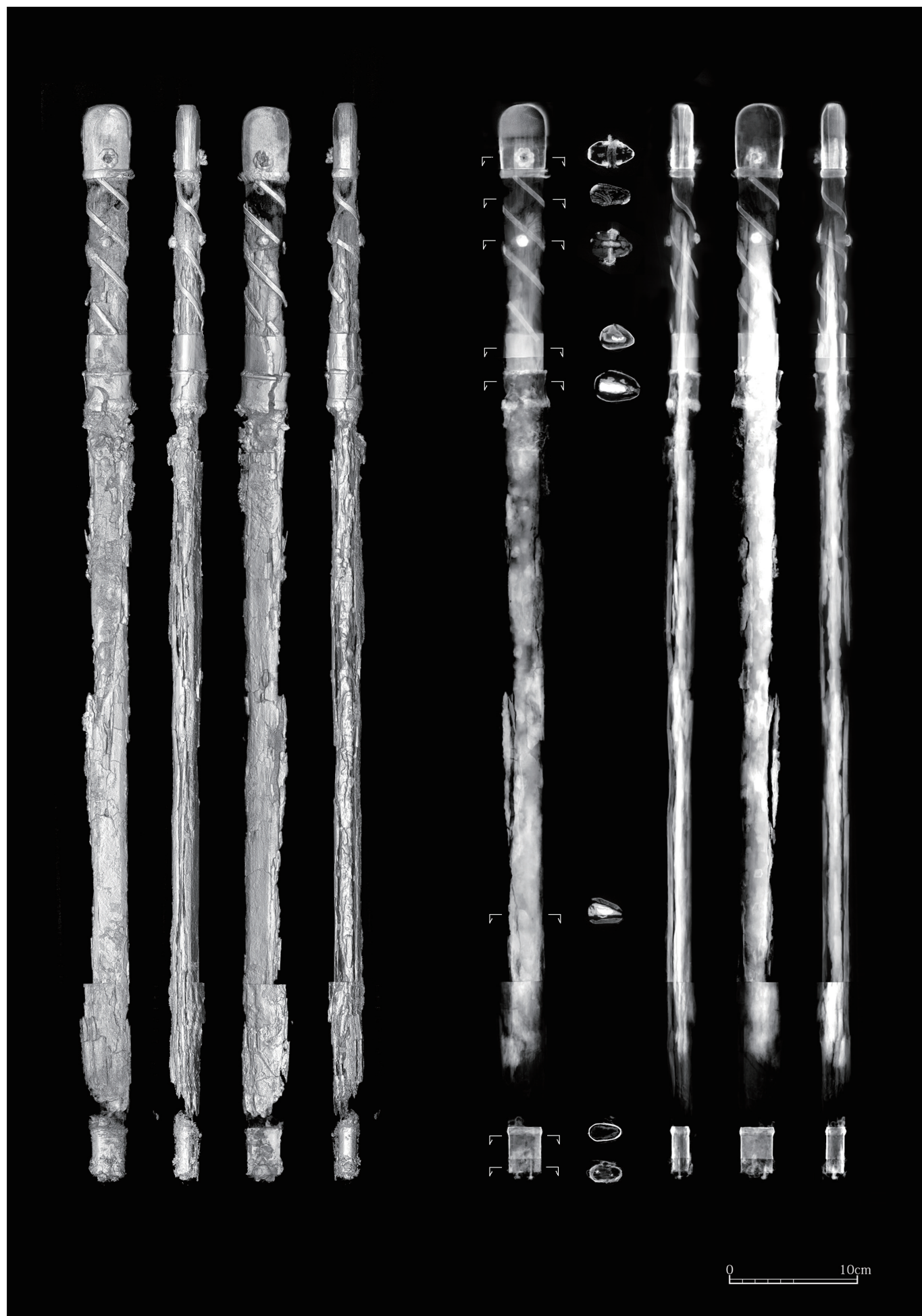


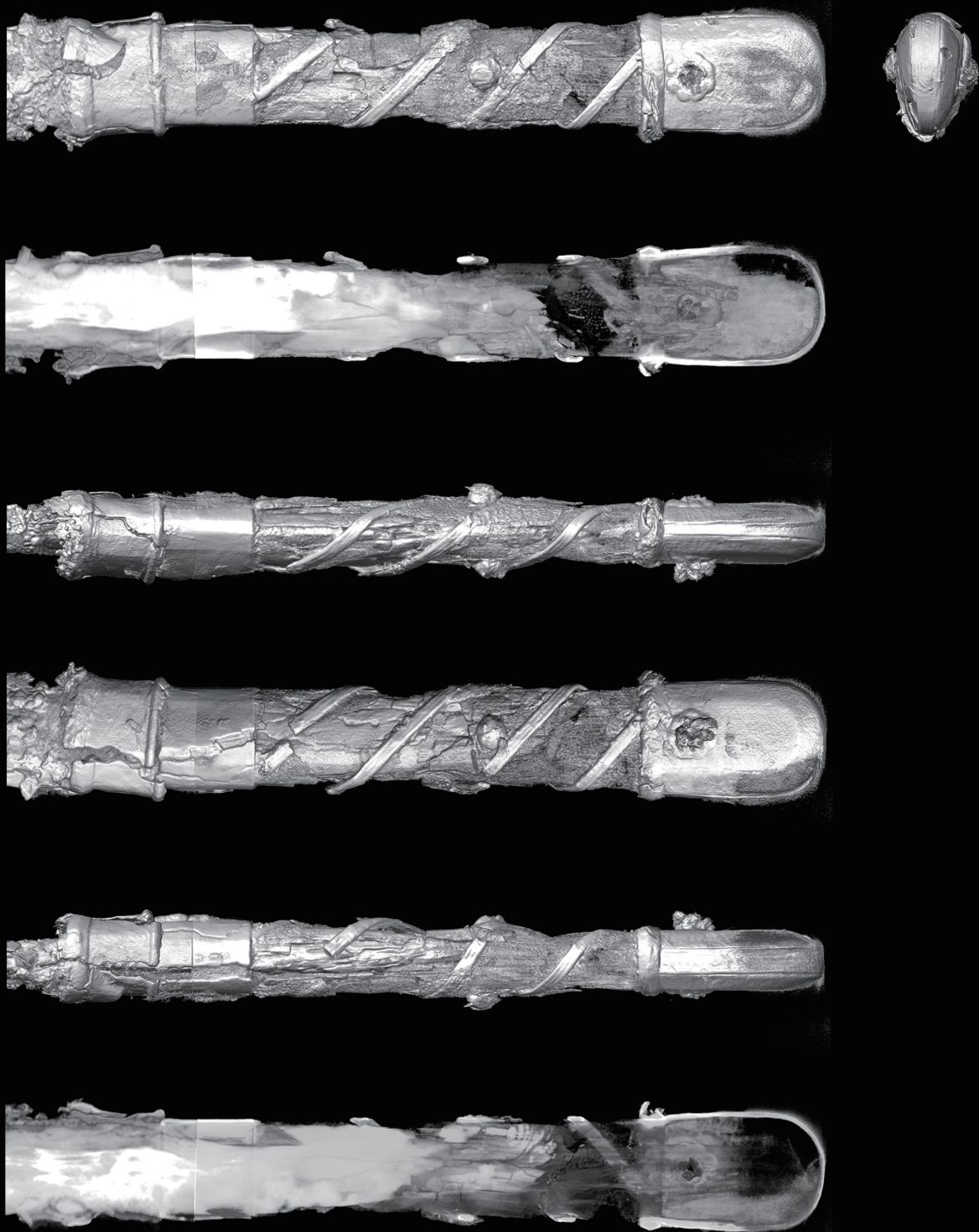




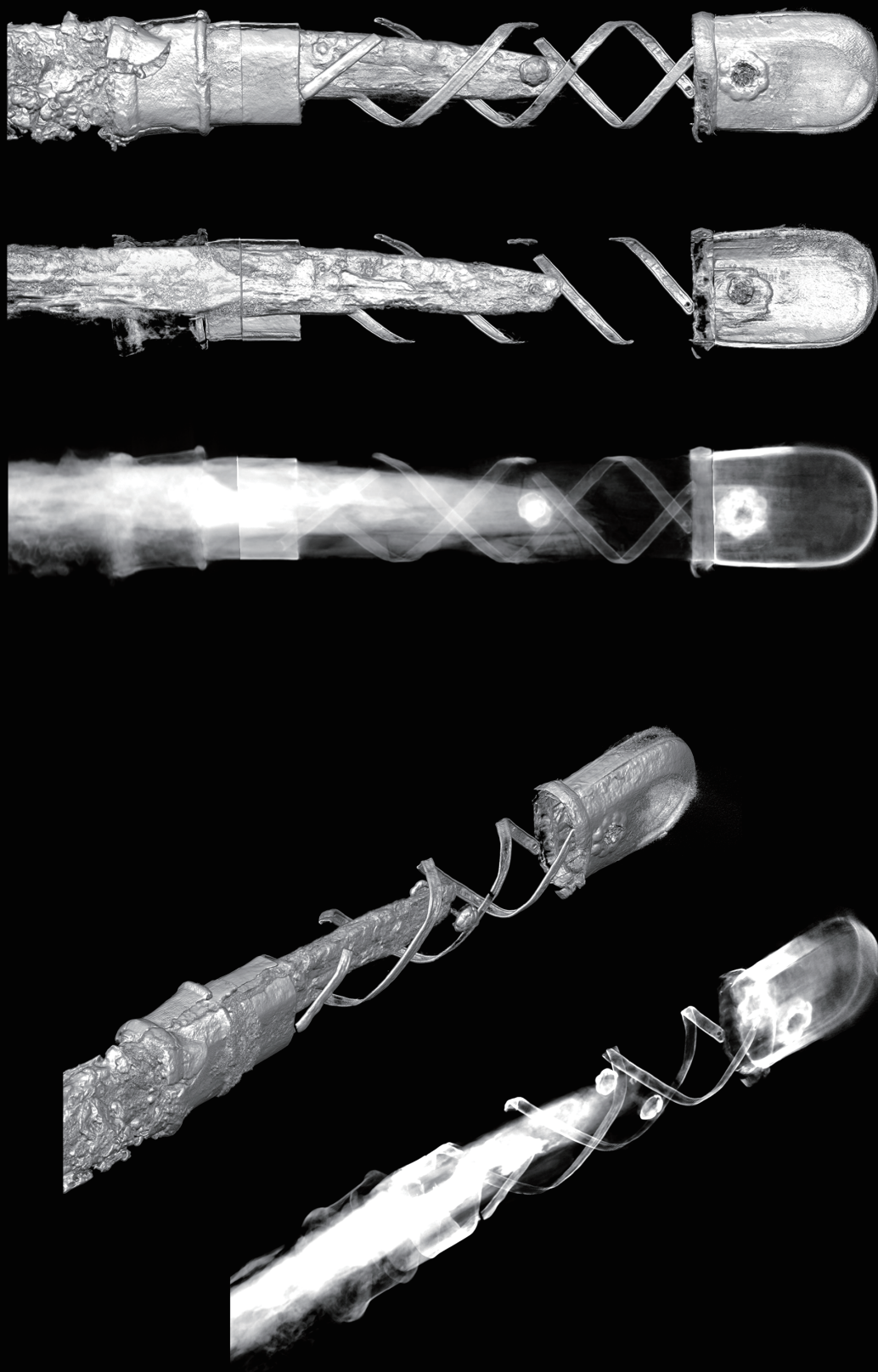


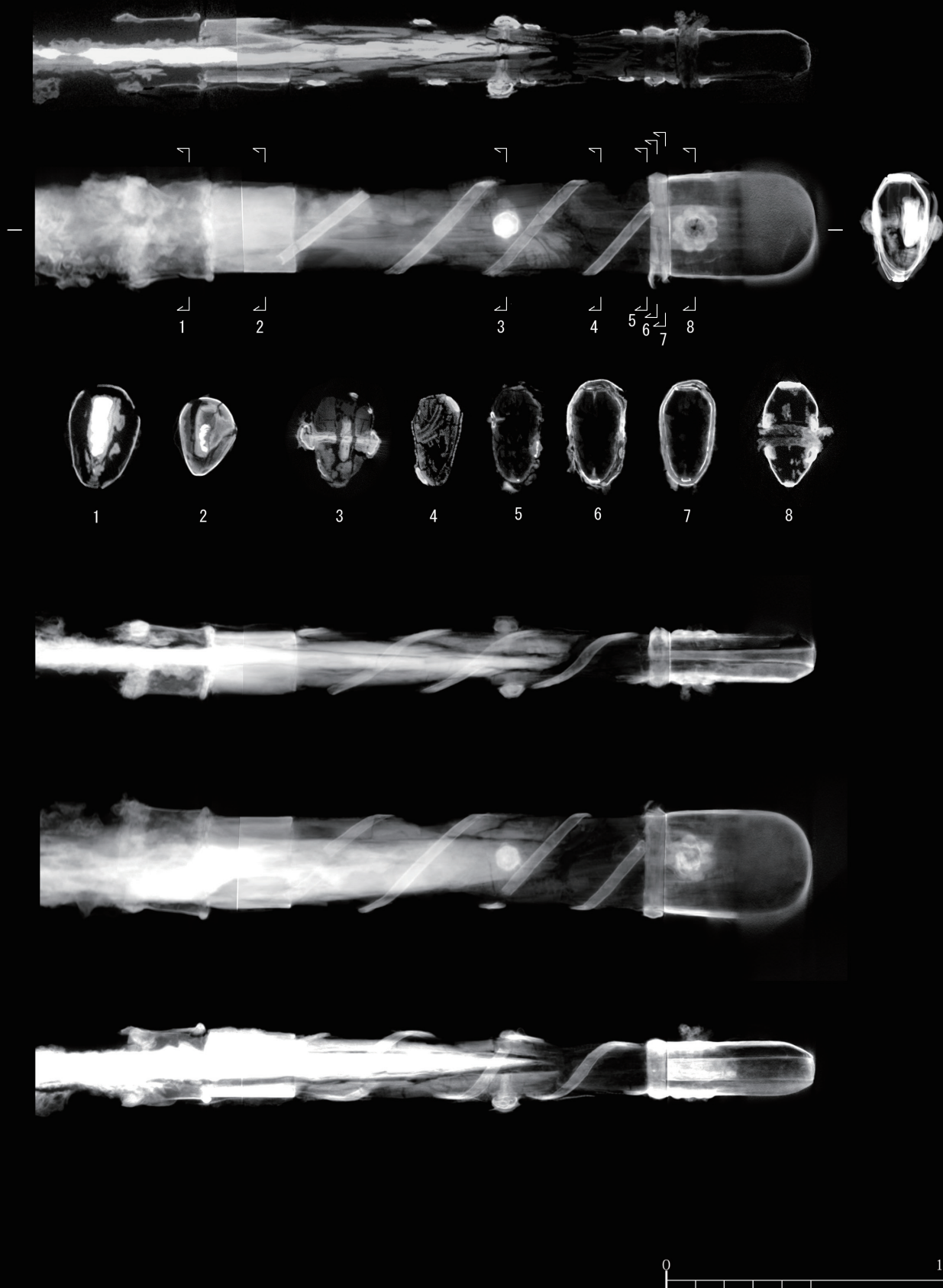
刀身部文様周辺画像は2Dスラブ厚調整画像 スラブ厚：±3mm

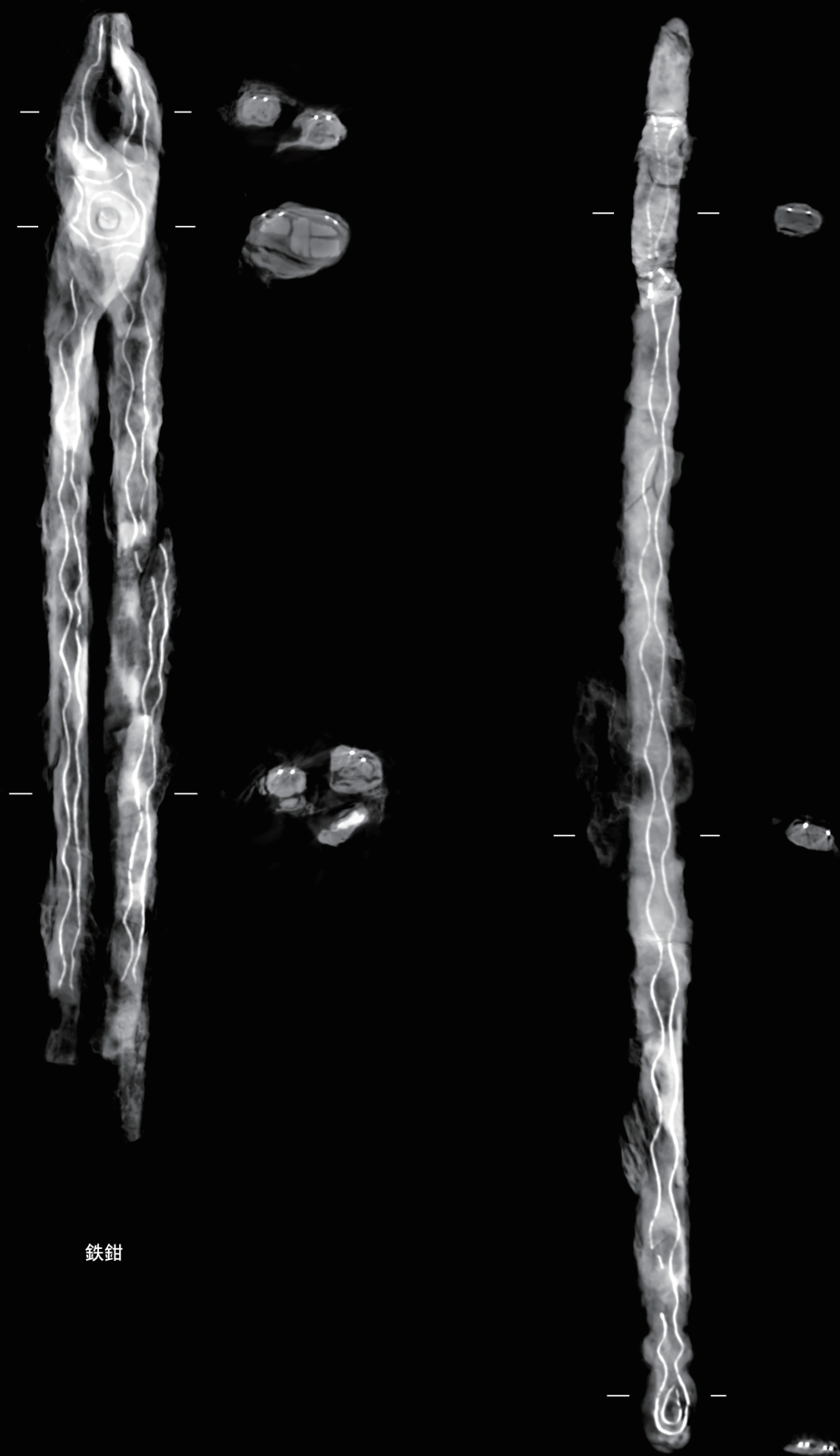




0 10cm







鉄鉗

へら状鍛冶具



