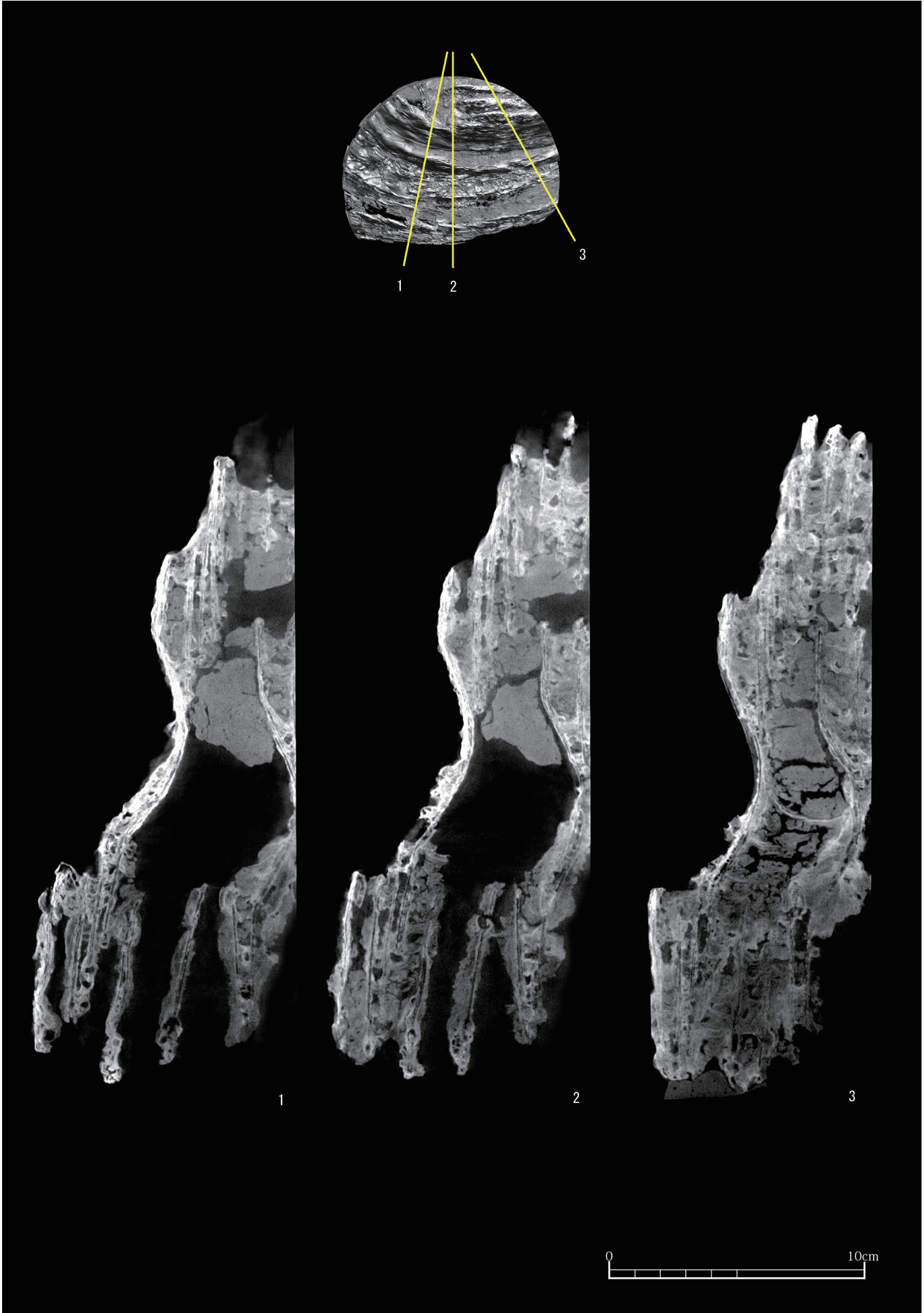
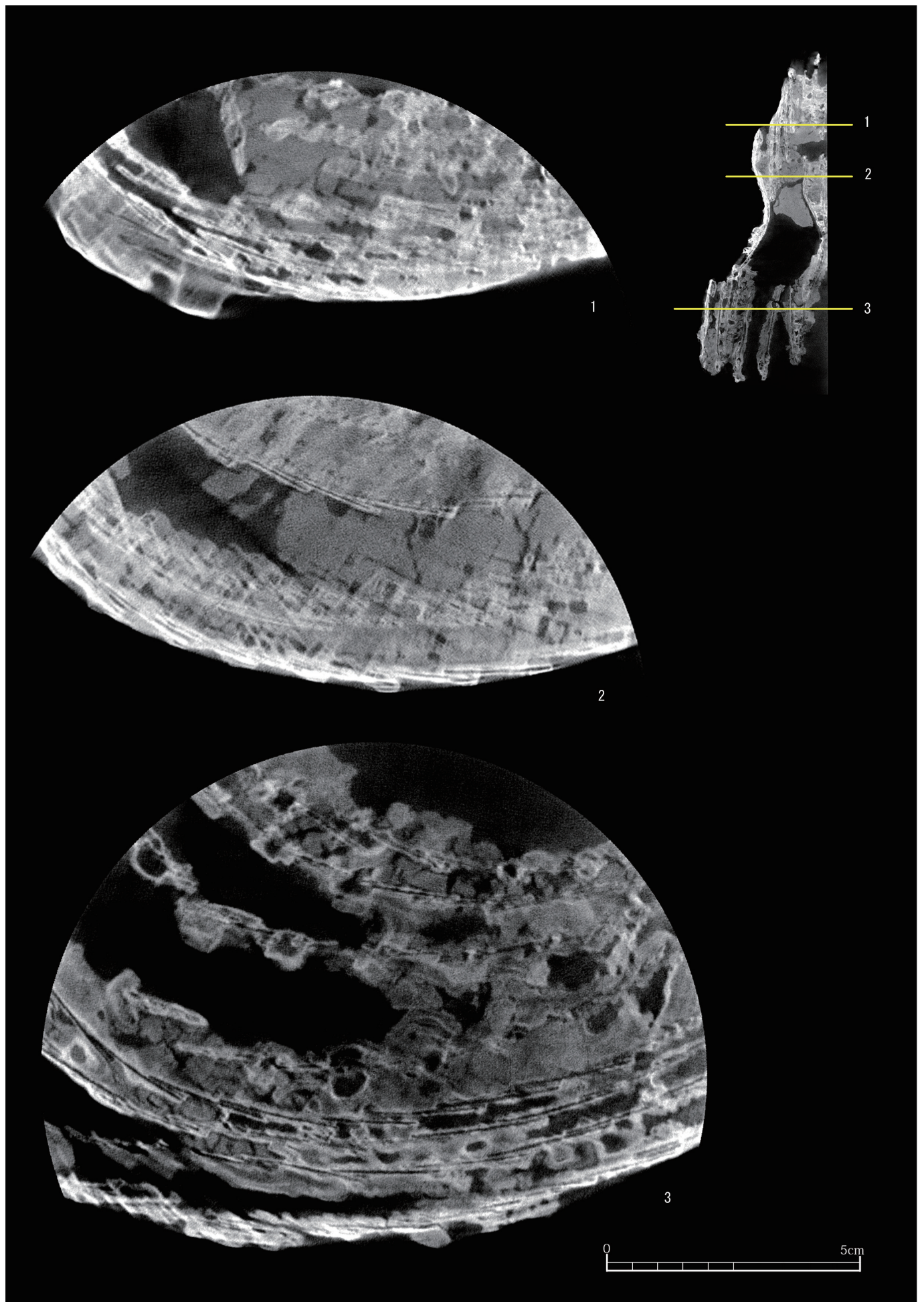
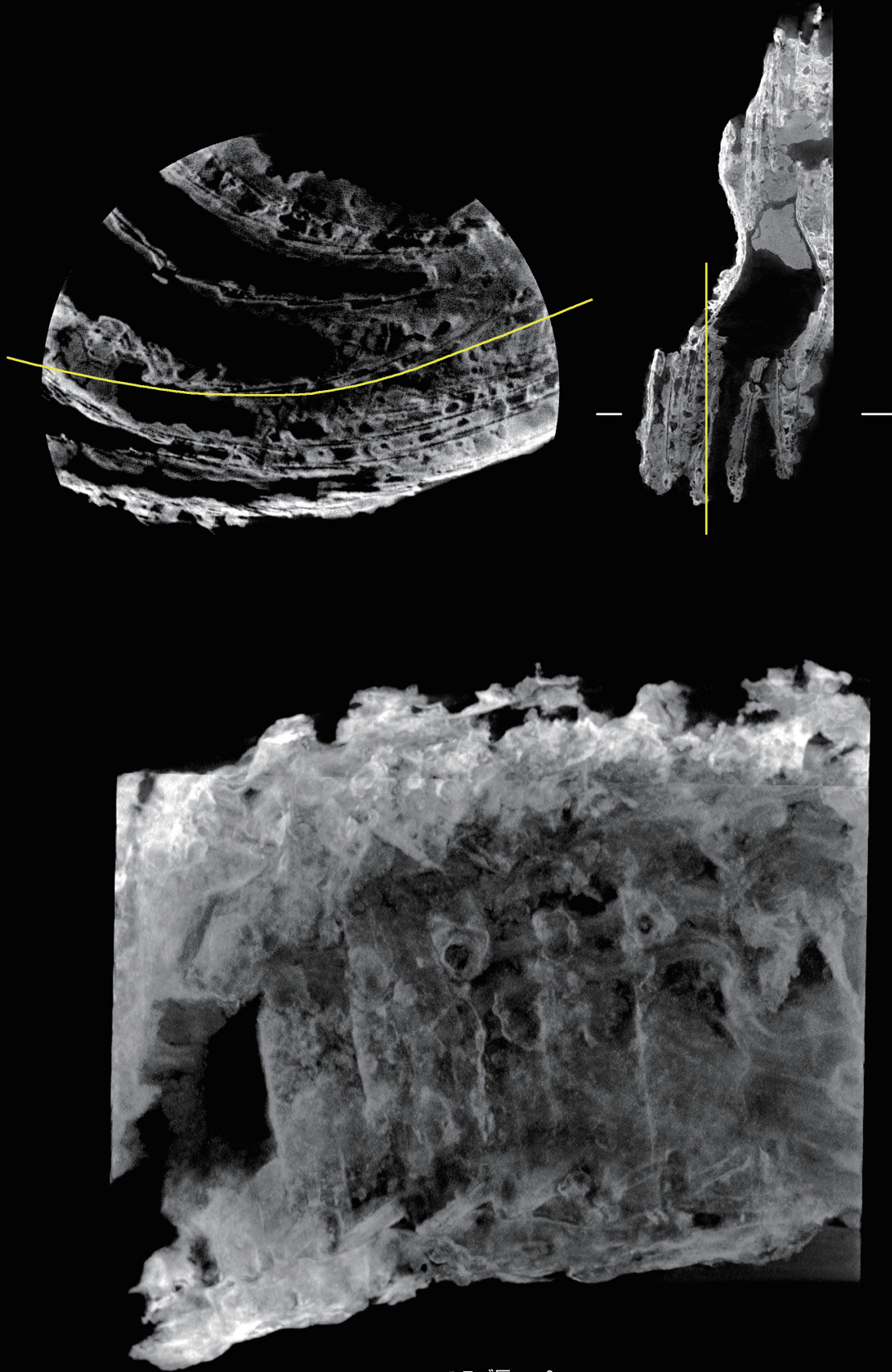


石塚1号墳 小札甲（部分撮影）







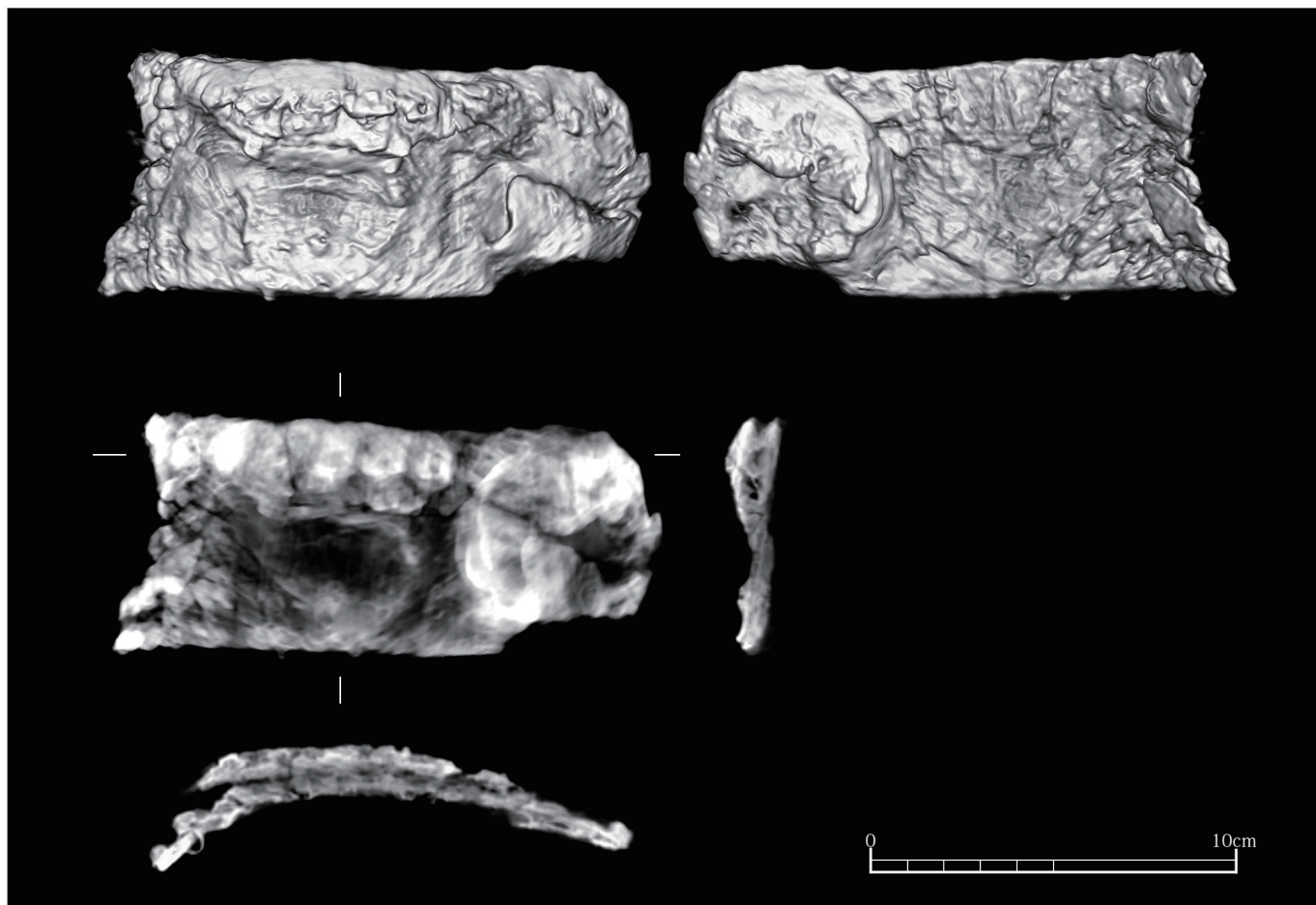
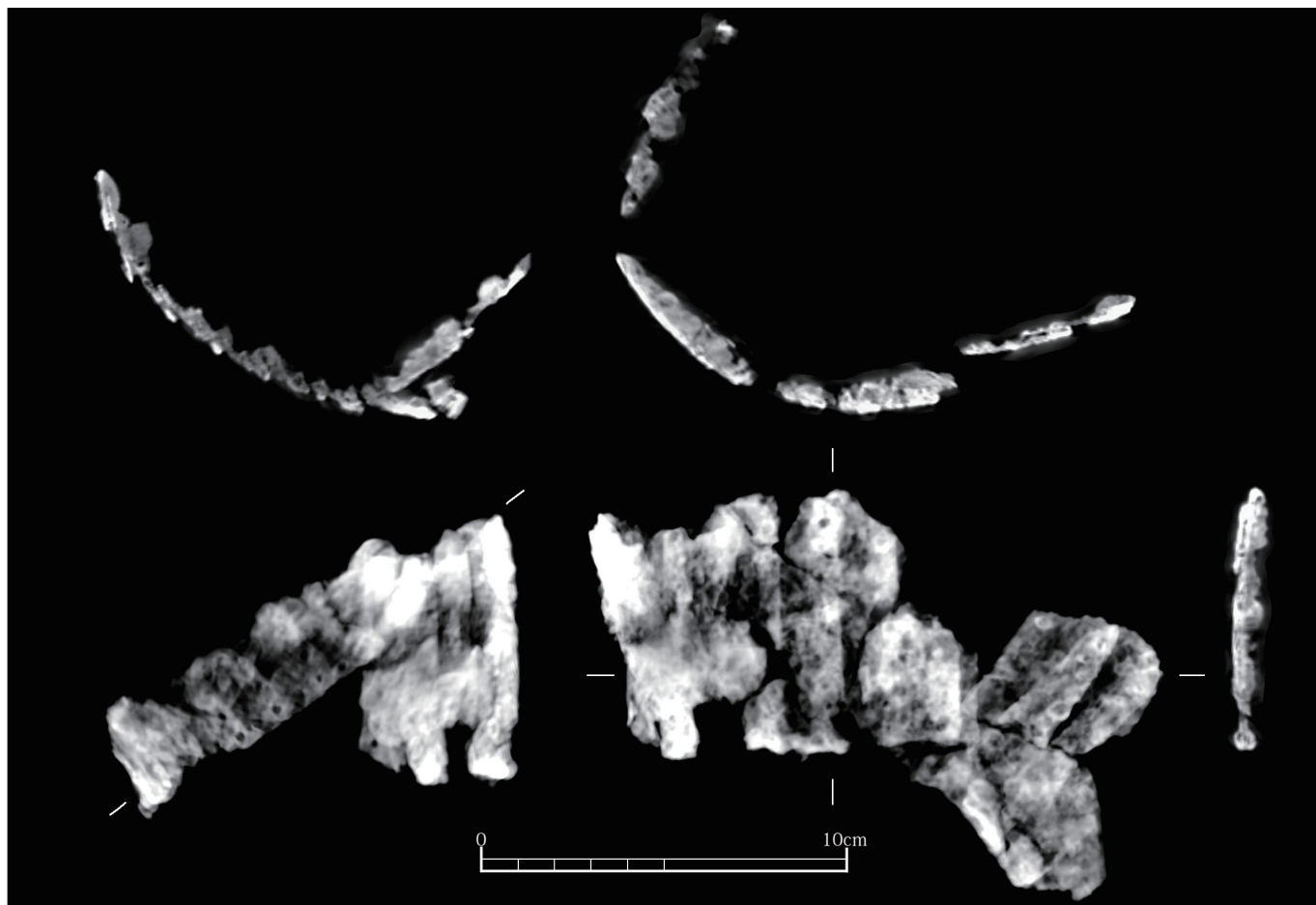


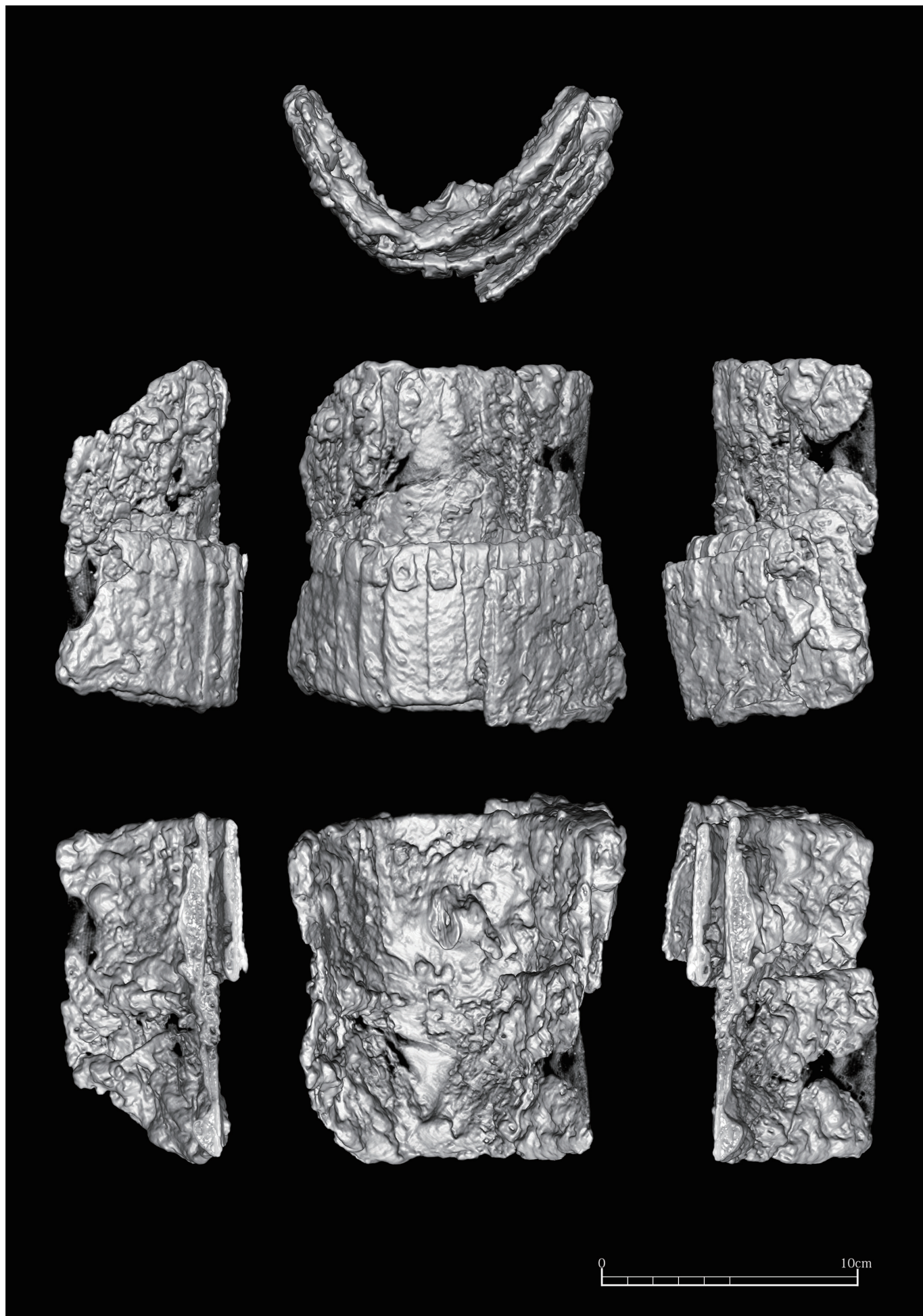
スラブ厚 : ±2mm

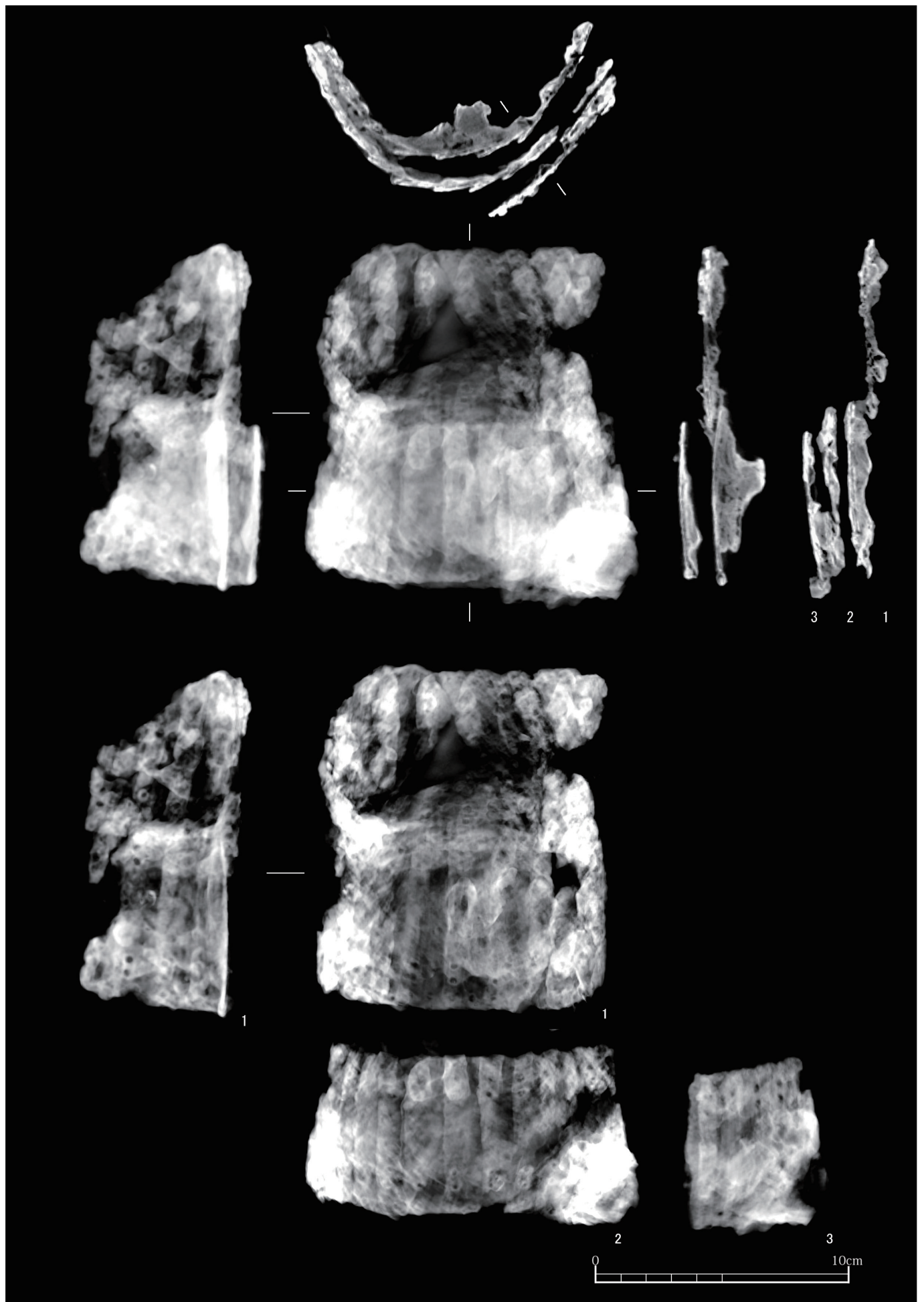


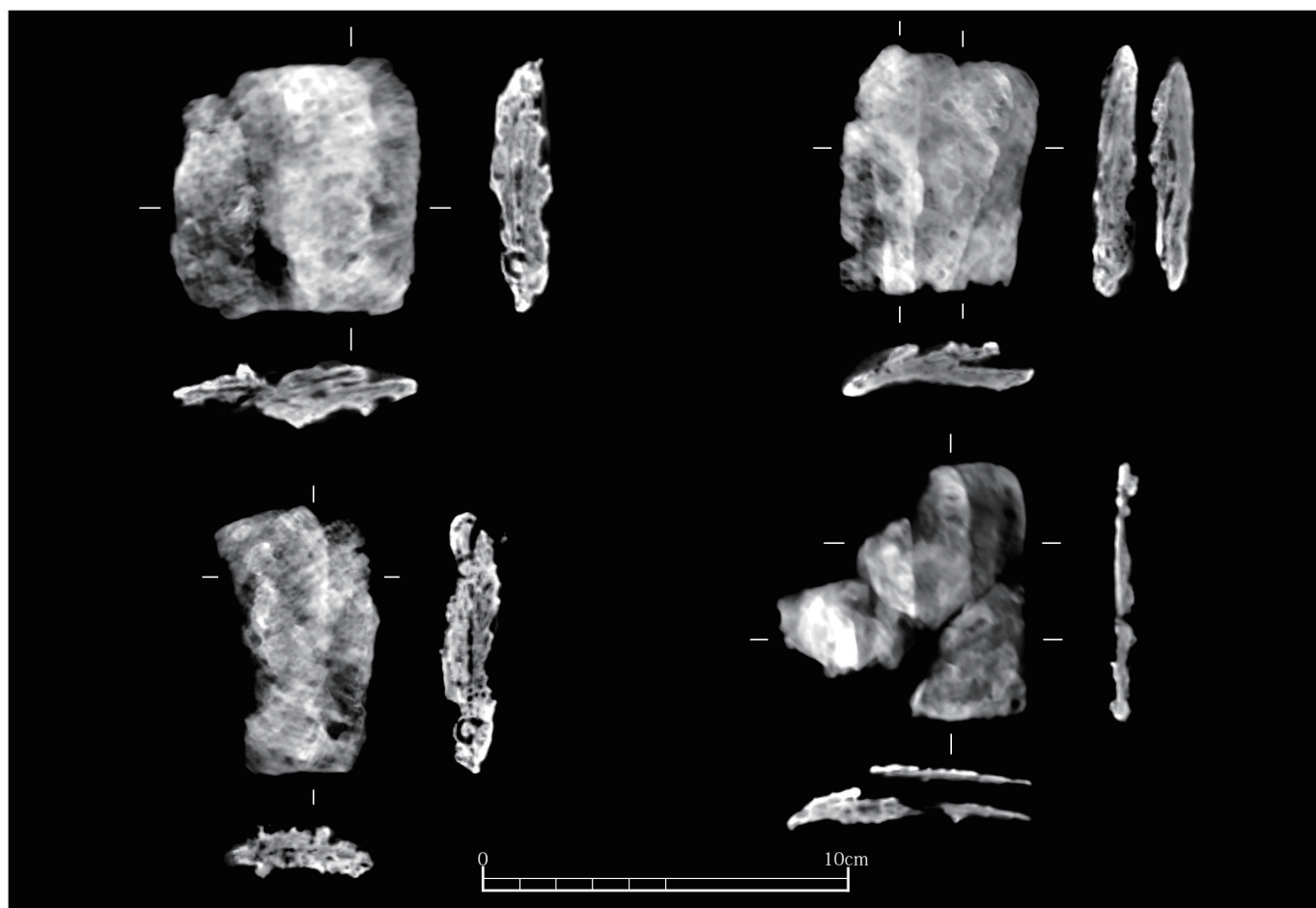
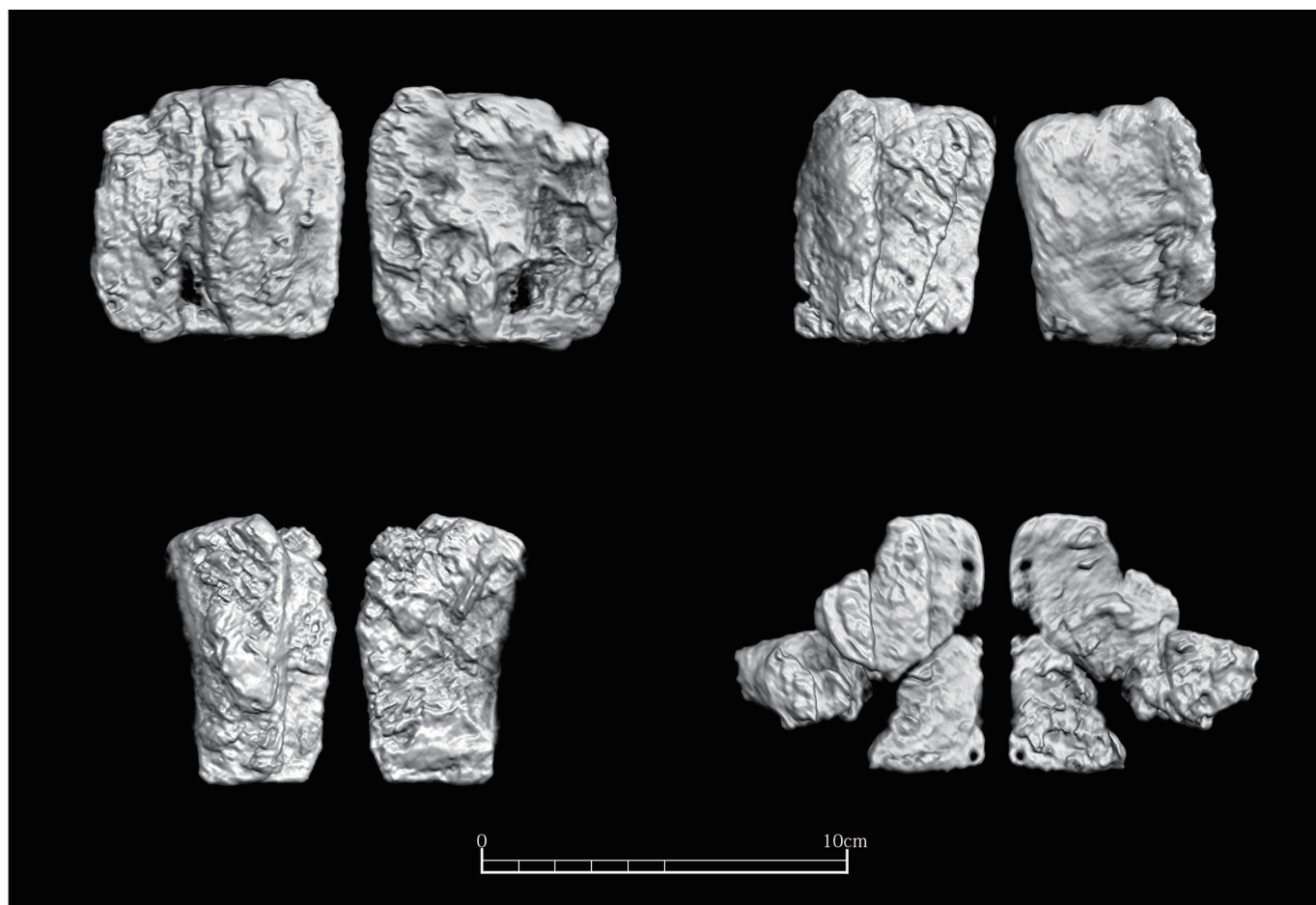


石塚1号墳 小札甲 破片2 X線透過・断面、破片3

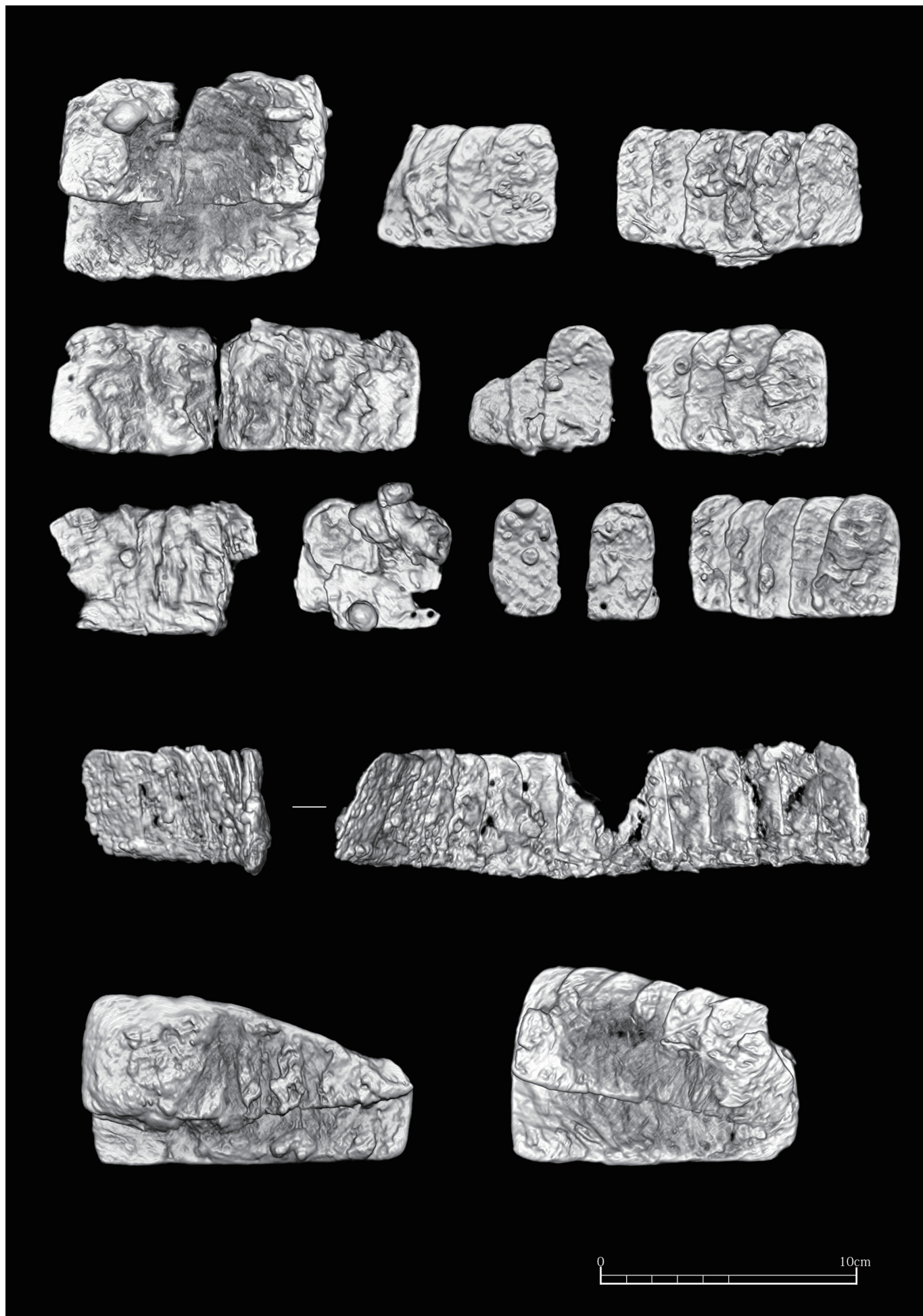


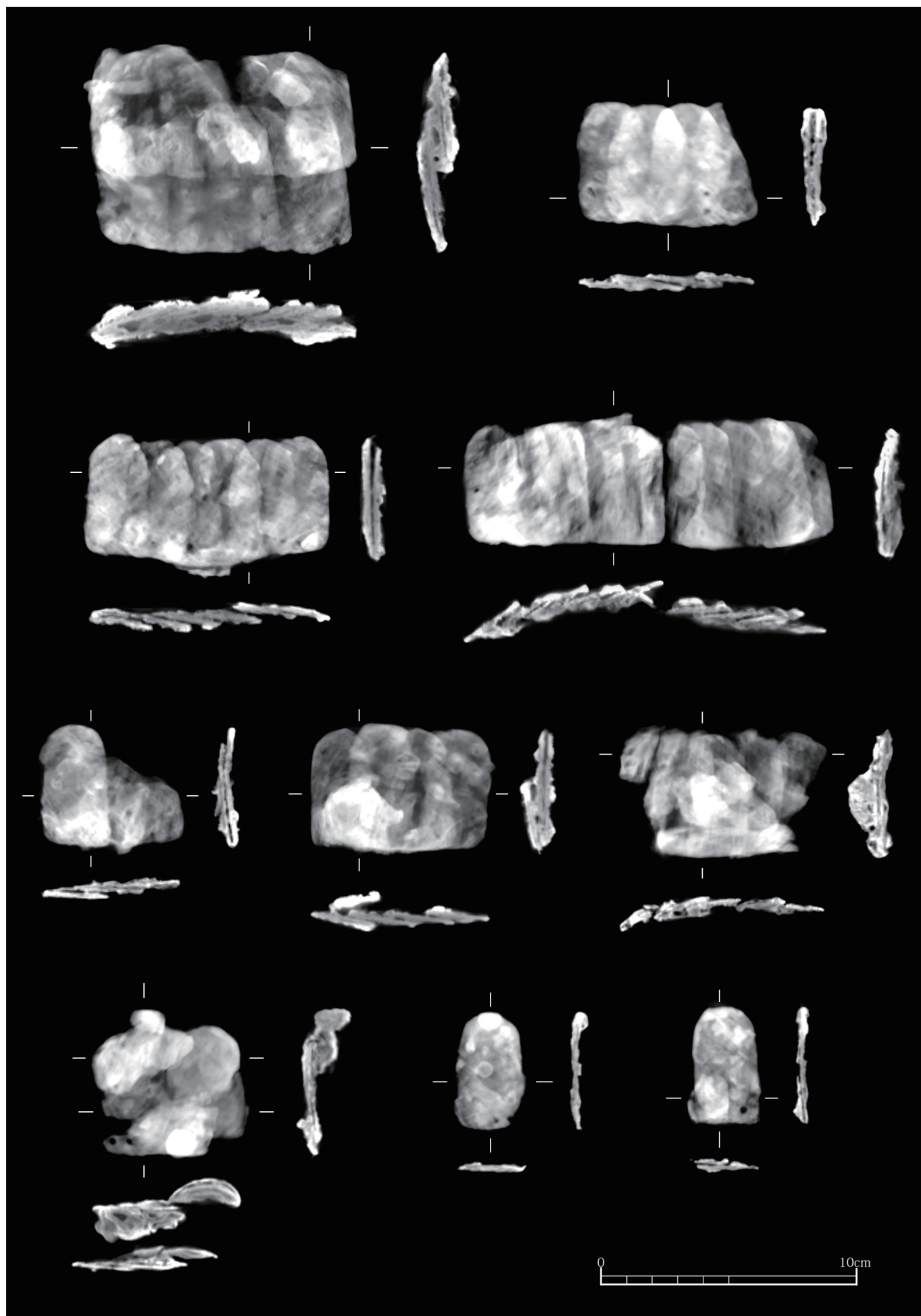


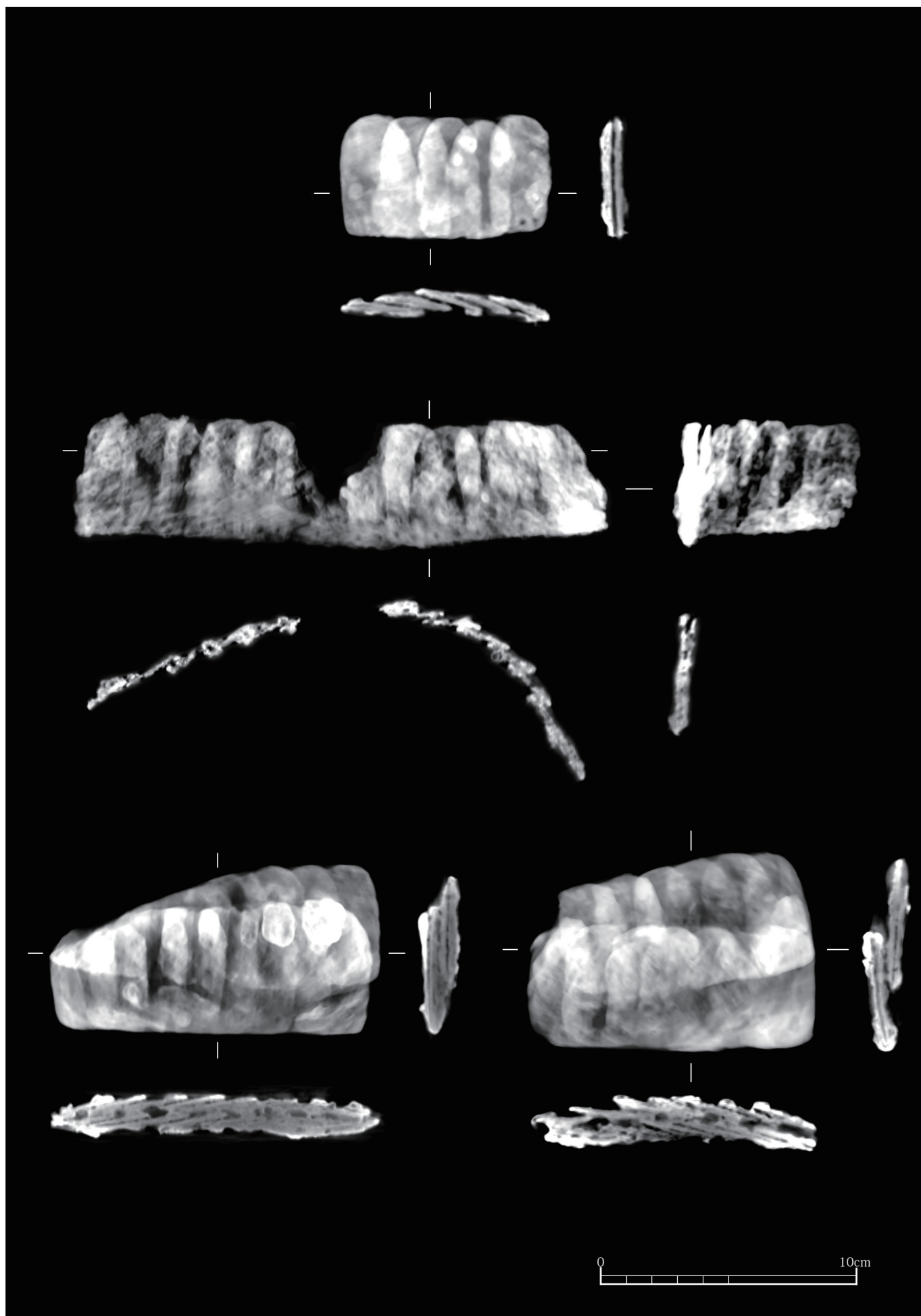




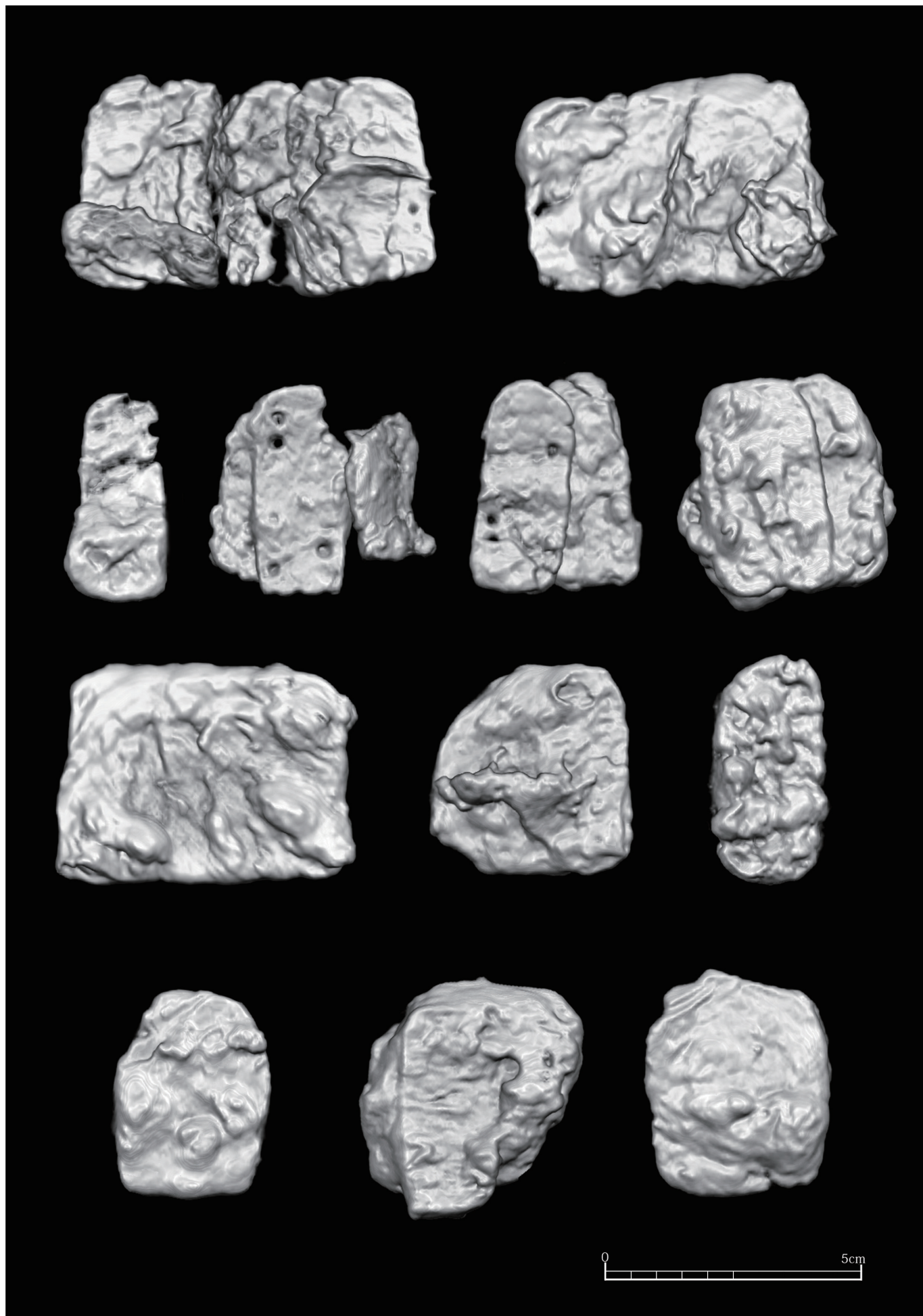


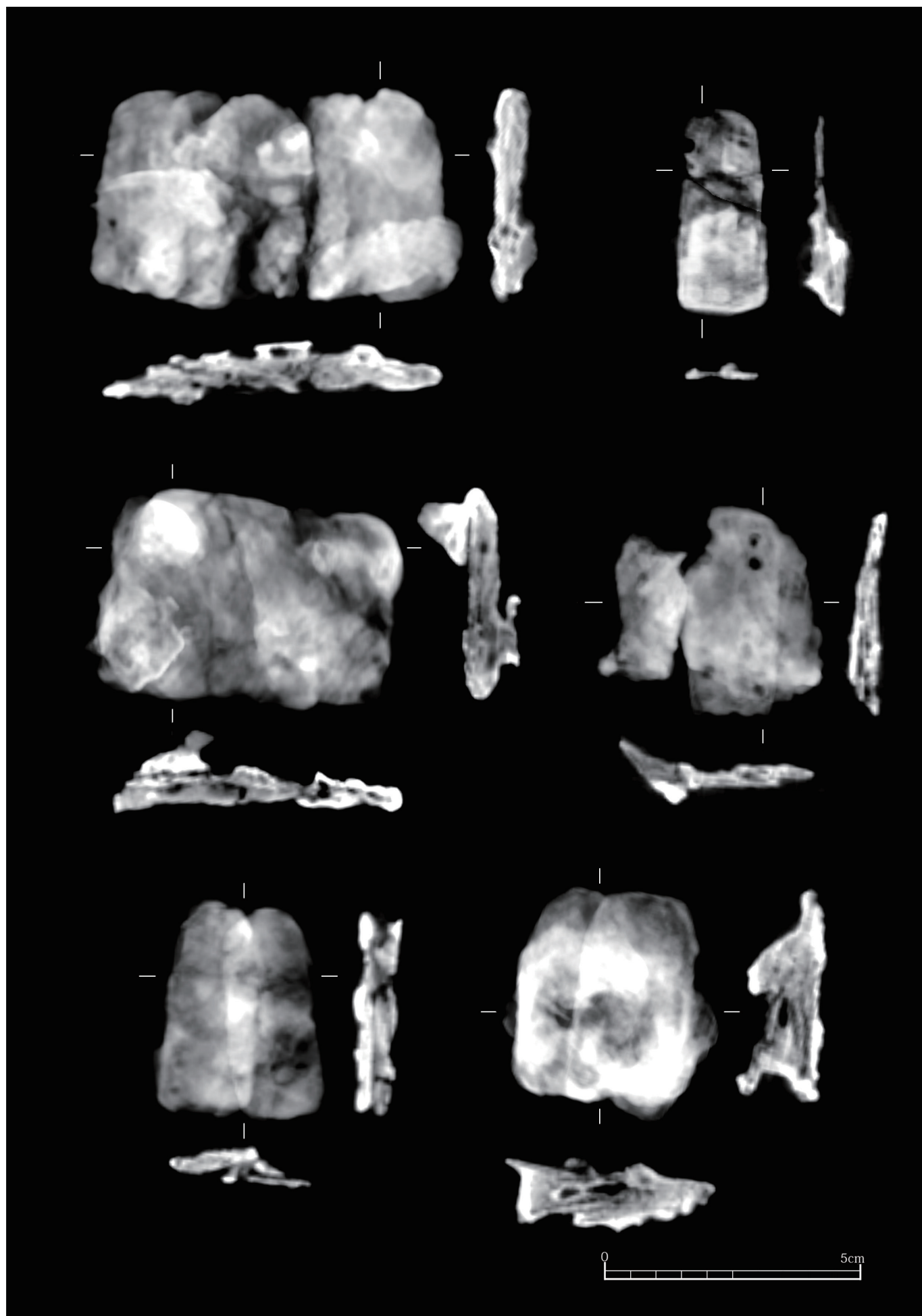


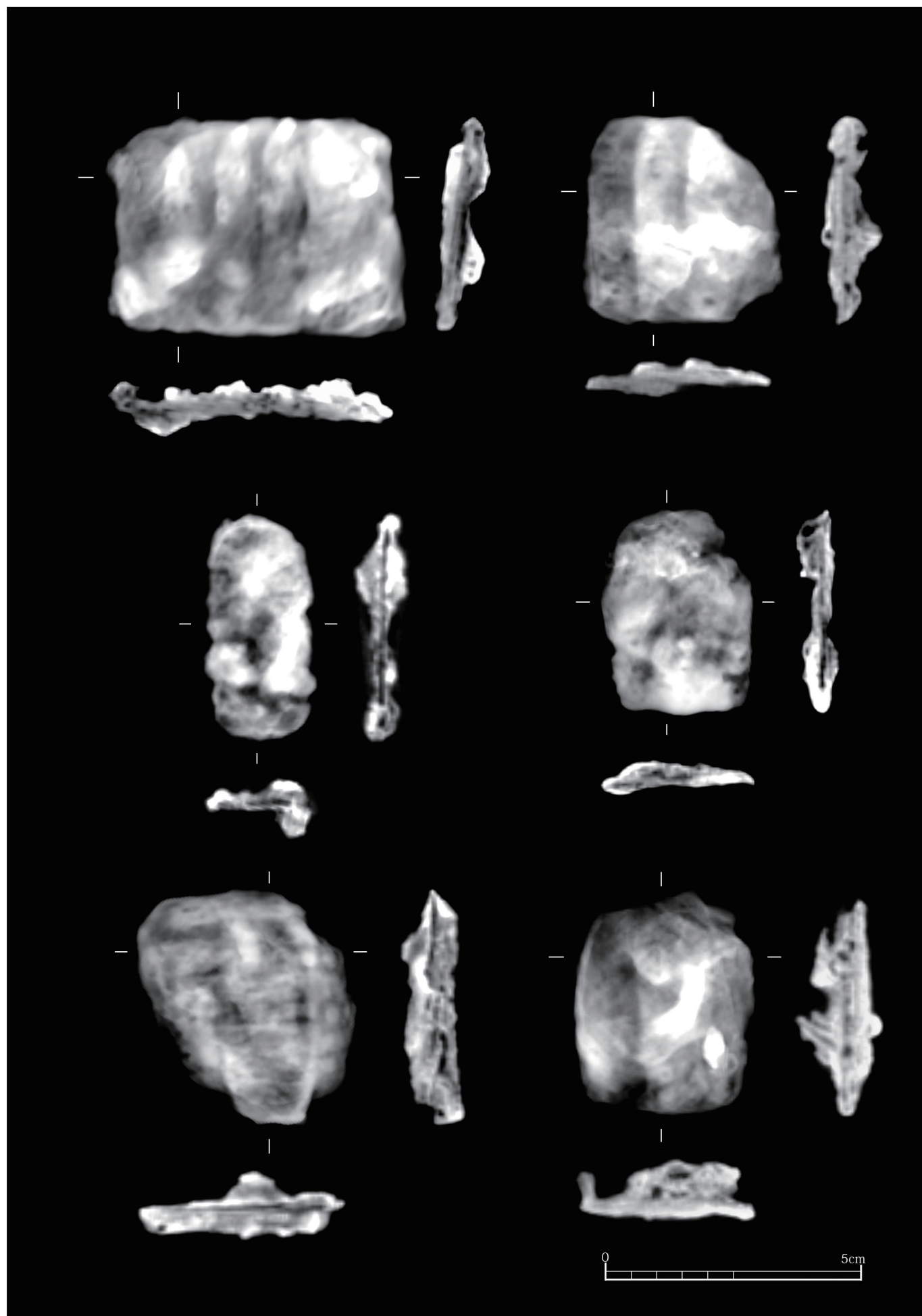




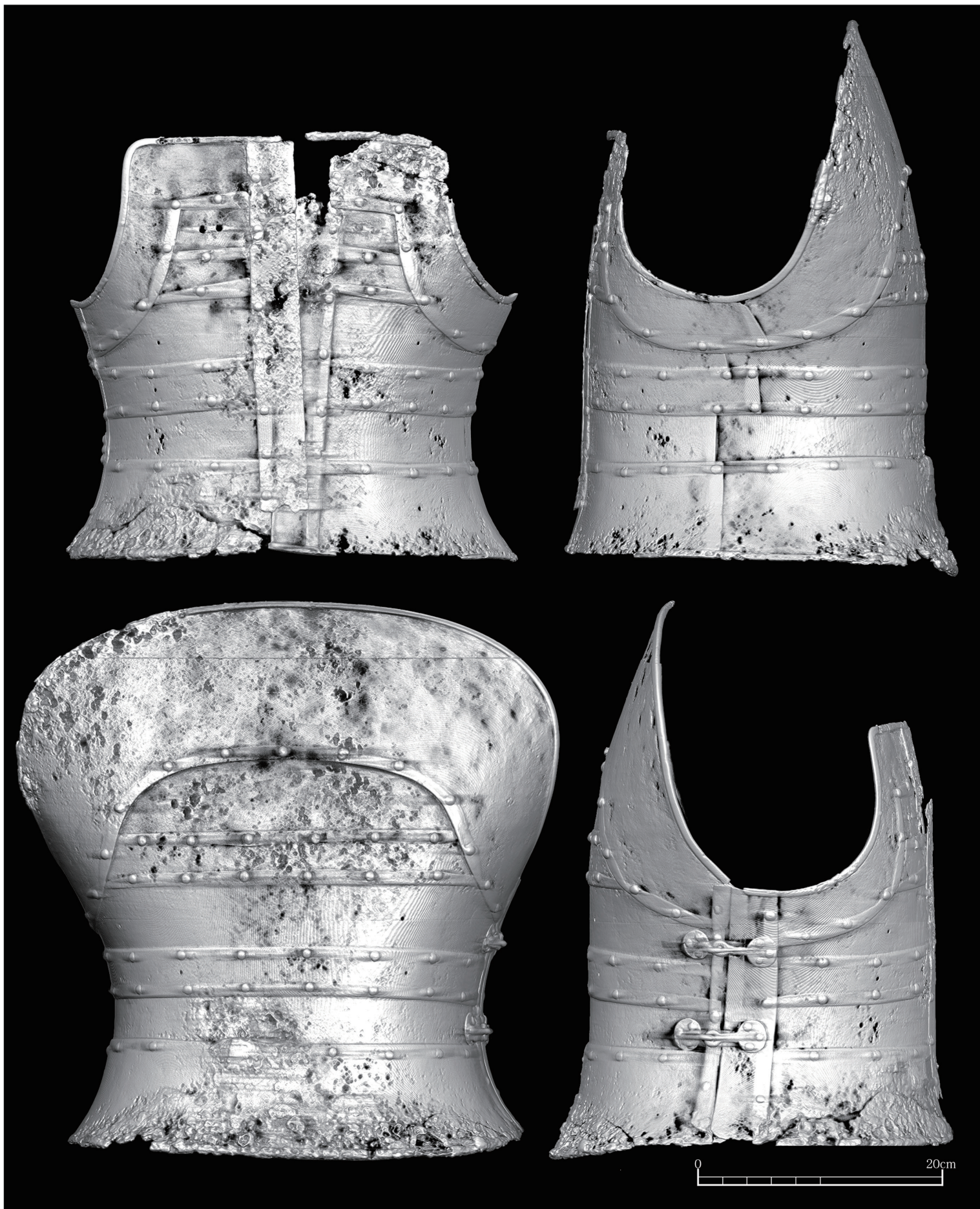




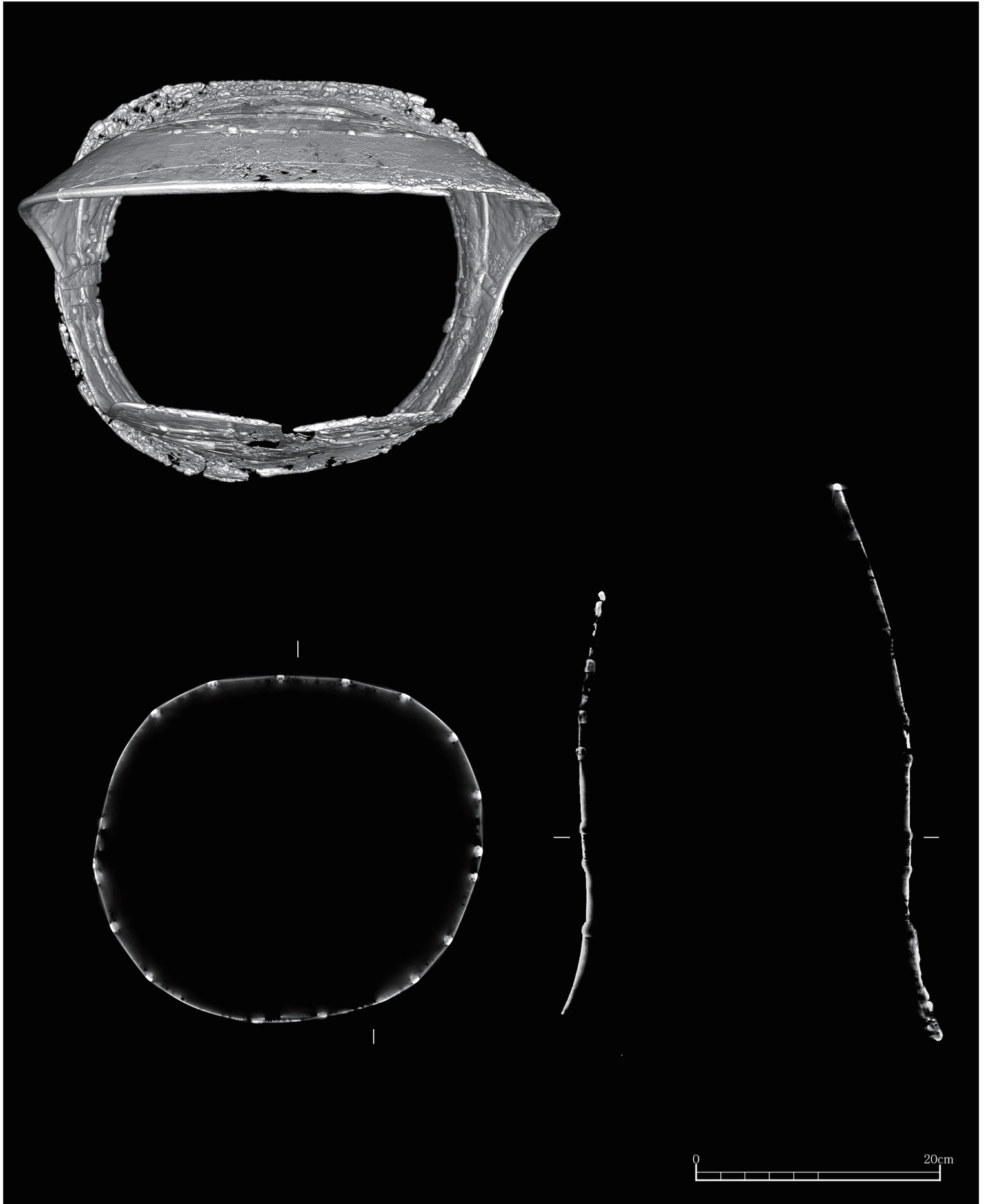


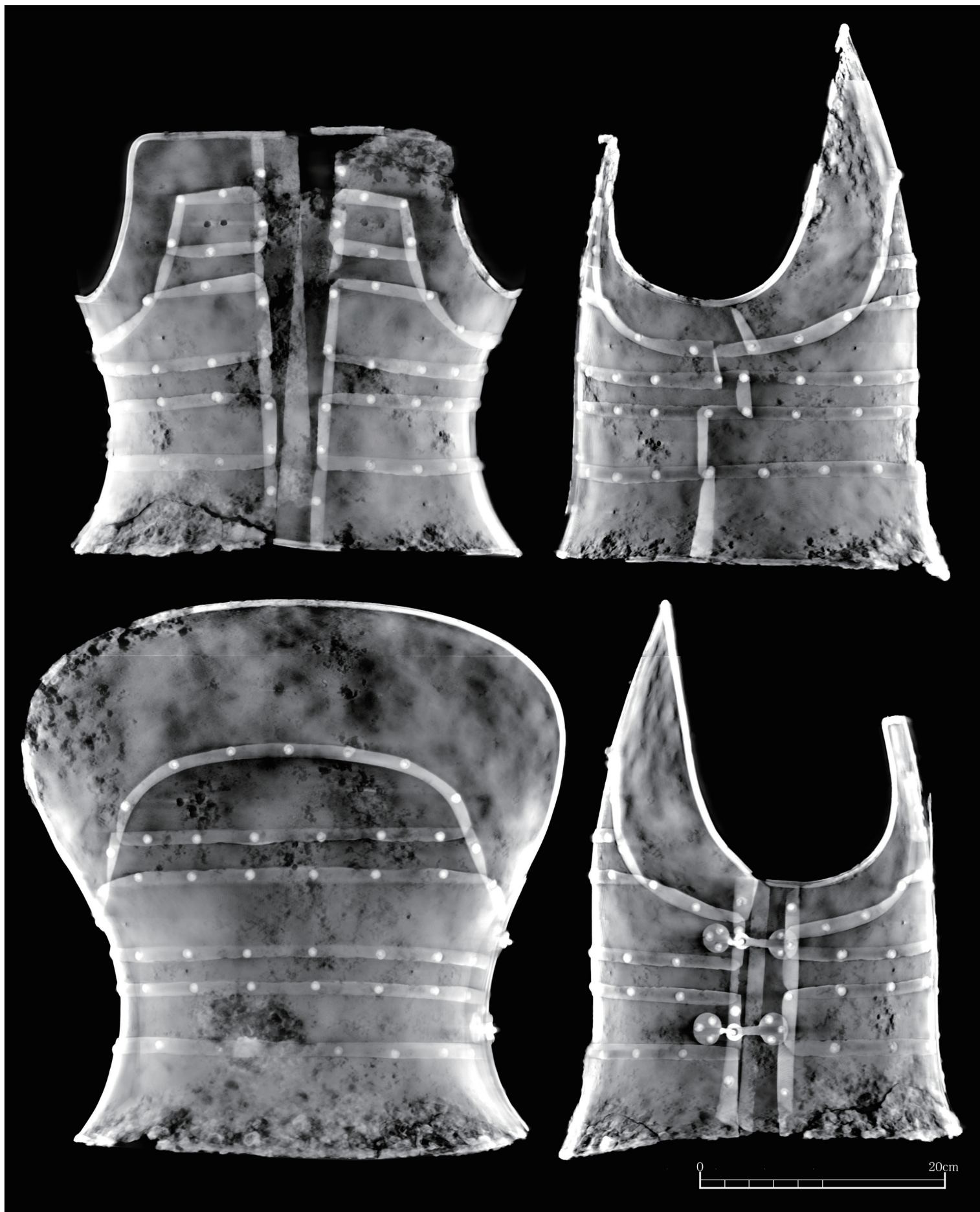


真浄寺2号墳 横矧板鋳留短甲（1号） 外面







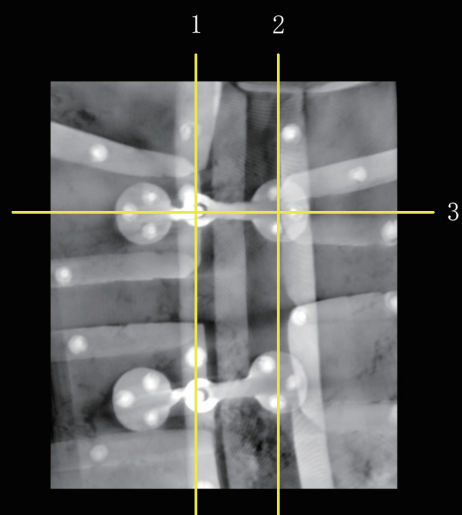
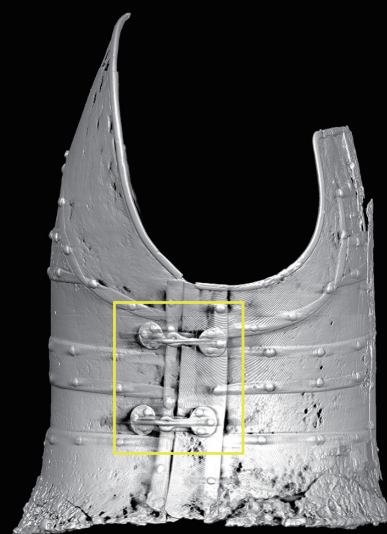




1



2

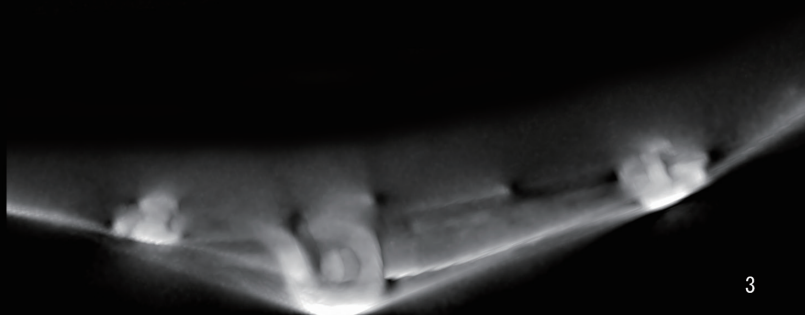


スラブ厚

1: $\pm 5\text{mm}$

2: $\pm 3\text{mm}$

3: $\pm 1.5\text{mm}$



3



