

Table 1 Background characteristics of study subjects

Variable	Open (n=32)	LTS (n=23)	<i>p</i> Value
Age (years)	69 (49-83)*	63 (49-74)*	0.01
Gender			0.88
Male	24 (75%)	16 (70%)	
Female	8 (25%)	7 (30%)	
Viral hepatitis status			0.37
HBV	5 (16%)	2 (9%)	
HCV	21 (66%)	19 (82%)	
Non-viral	6 (18%)	2 (9%)	
ICGR 15 (%)	24.8 ± 1.8	34.9 ± 2.7	0.002
Child-Pugh			0.39
A	16 (50%)	8 (35%)	
B	16 (50%)	15 (65%)	
Tumor number	1.7 ± 0.2	1.7 ± 0.2	0.81
Tumor size (cm)	2.3 ± 0.1	2.0 ± 0.1	0.049
AFP (ng/mL)	77.2 ± 26.2	51.6 ± 17.5	0.45

LTS laparoscopic/thoracoscopic, *HBV* hepatitis B virus, *HCV* hepatitis C virus, *ICGR 15* indocyanine green retention test, *AFP* alpha-fetoprotein

* Range

Table 2 Tumor locations of two groups

Group	Location (segment)							
	I	II	III	IV	V	VI	VII	VIII
Open (lesions n=51)	2	1	4	9	10	7	3	15
LTS (lesions n=33)	1	0	8	1	8	1	4	10

LTS laparoscopic/thoracoscopic

Table 3 Operative characteristics and clinical outcome after operation

	Open (n=32)	LTS (n=23)	<i>p</i> Value
Operation time (min)	193 ± 11	156 ± 11	0.02
Blood loss (ml)	162 ± 27	71 ± 25	0.02
Postoperative complication	4 (13%)	3 (13%)	>.9999
Pleural effusion	0	2	
Atelectasis	0	1	
Ileus	1	0	
Enteritis	1	0	
Surgical site infection	2	0	
Postoperative hospital stay (day)	15.3 ± 1.1	12.1 ± 0.9	0.04

LTS laparoscopic/thoracoscopic

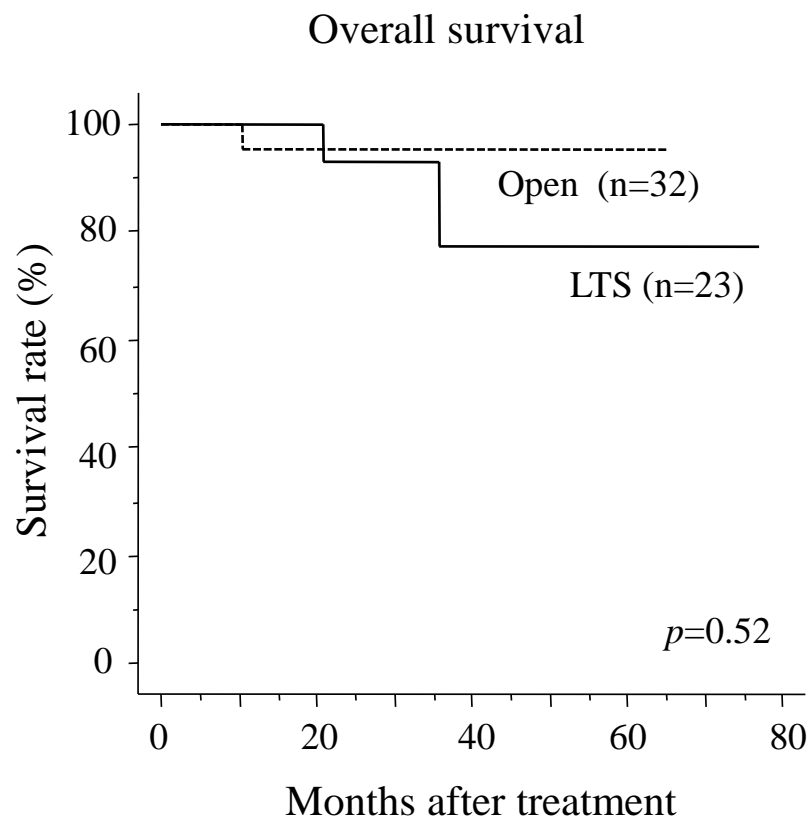


Fig. 1

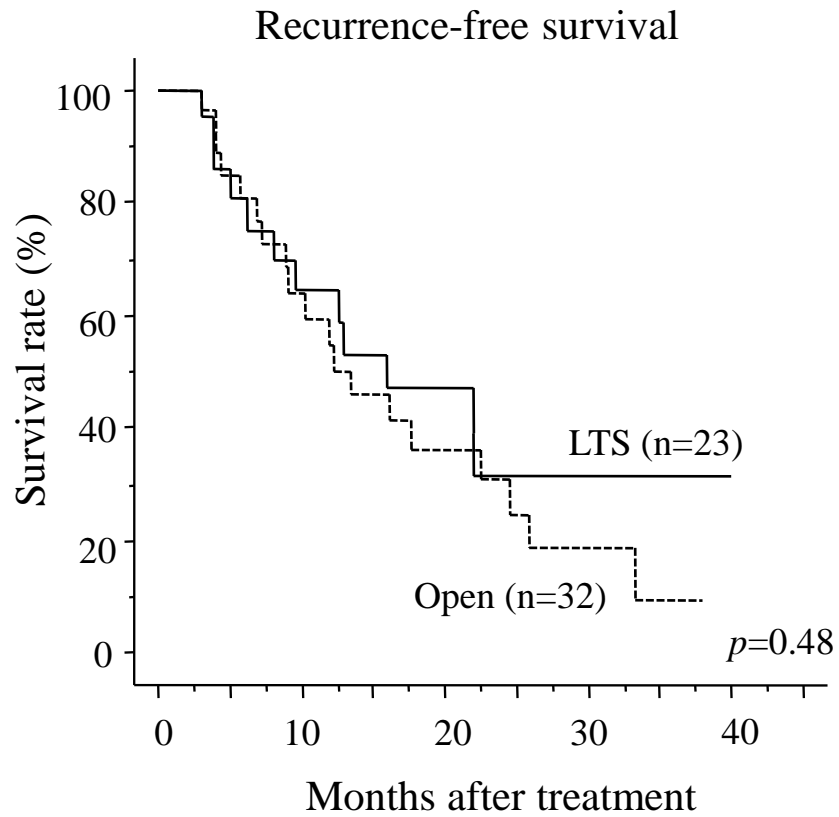


Fig. 2

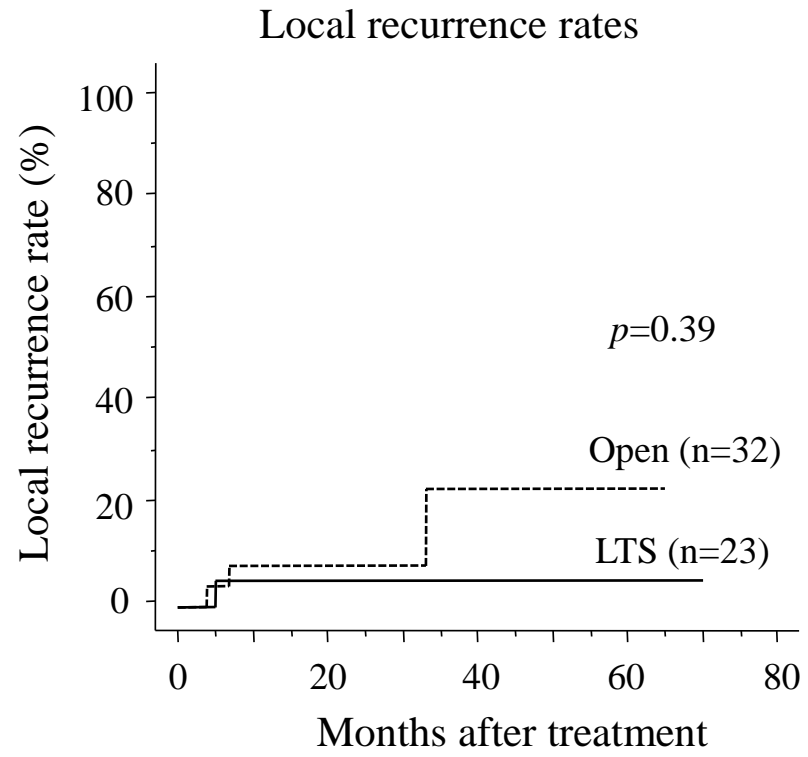


Fig. 3