

**Description of a new Ichneumonid parasite
of *Cryptoblades laricana* Mutsuura
(Hymenoptera, Ichneumonidae)**

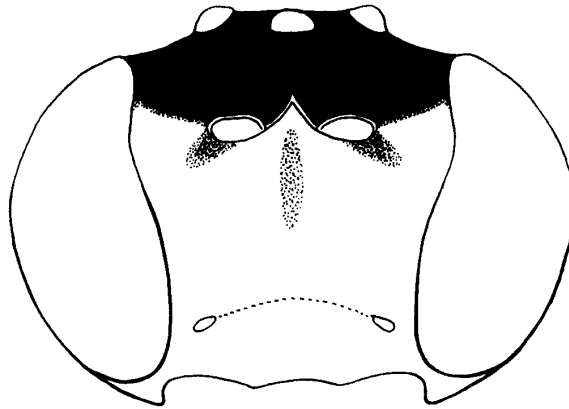
Kanetosi KUSIGEMATI
(*Entomological Laboratory*)

***Chorinaeus laricanae*, sp. nov.**

♀. Face about 1.3 times as wide as high, moderately and evenly convex, separated from clypeus by a shallow and broad groove, shallowly and closely punctured; clypeus moderately convex, strongly and closely punctured, the apical margin being weakly concave medially; malar space $5/7 - 6/7$ as long as basal width of mandible; mandible stout, slightly tapering towards apex, 2.1 - 2.3 times as long as its basal width, the lower tooth being very small; distance between posterior ocelli and eyes about as long as diameter of an ocellus; antennae with 29 or 30 segments; 1st flagellar segment 1.9 - 2.2 times as long as wide at apex and about 1.4 times as long as the 2nd. Pronotum smooth on lower portion and densely punctured on upper portion. Scutellum strongly convex, rather sparsely hairy, with strong lateral carinae. Metapleuron polished, broadly and sparsely haired along upper and posterior margin. Propodeum rather short and strongly convex; median longitudinal carinae almost parallel-sided; propodeal spiracle ovate, situated at equal distance from lateral and pleural carinae. Nervulus postfurcal by $2/5$ of its own length; nervellus intercepted near its lower $1/5 - 1/4$. Hind femur about 2.6 times as long as wide in lateral view; front spur of middle tibia slightly shorter than the hind spur; basitarsus of middle tarsus about $7/9$ as long as the following segments together except claws. Abdomen somewhat clavate; 1st tergite shallowly and rather sparsely punctured; 2nd tergite about $5/7 - 7/9$ as long as wide at apex and approximately as long as the 3rd in length, strongly and closely rugoso-punctured longitudinally, the sublateral longitudinal carinae being obsolete; 3rd tergite strongly and closely punctured, longitudinally rugoso-punctured basally, with a median longitudinal carinae on basal $2/3 - 7/9$.

Black. Face, clypeus, lower lateral corner of frons, malar space, lower frontal half of gena, yellow; mouth parts yellow to yellowish brown, the apical $1/3$ of mandible being dark brown; face with median dorsal spot and crescent near each antennal socket, yellowish brown; scape and pedicel black dorsally, yellowish ventrally; flagellum dark brown, darker dorsally. Tegula dirty yellowish brown, paler apically. Front and middle coxae black, yellow at apex; hind coxa entirely black; front and middle trochanters yellow to yellowish brown; hind trochanter blackish; front femur dark brown, yellow to yellowish brown at both ends, with a large black stripe on ventral side; middle femur black, yellow to yellowish brown at both ends; hind femur black, yellow to yellowish brown at apex; tibiae yellow dorsally, yellowish brown ventrally; tarsi yellowish brown.

Length: Body 5.7 - 7.1 mm., forewing 4.2 - 5.3 mm.



Chorinaeus laricianae, sp. nov.
Face in frontal view.

♂. Unknown.

Holotype (♀): Nagano, Honshu, 1969, bred from *Cryptoblades lariciana* by T. Osawa. Paratypes: 1 ♀, Daibosatsu-tôge, Yamanashi, Honshu, 23-v-69, K. Kanmiya leg.; 1 ♀, Tobirakôgen, Nagano, Honshu, 7-8-vi-68, T. Naito leg. The holotype is deposited in the Momoi's collection.

Host: *Cryptoblades lariciana* Mitsuura.

Distribution: Japan (Honshu).

This species is very closely related to *Chorinaeus eniwanus* Kusigemati from Japan, but readily distinguished from the latter by the face which is separated from clypeus by a distinct groove, by the strongly convex scutellum with strong lateral carinae and by the number of the antennal segments.

Acknowledgement

I am greatly indebted to Dr. S. Momoi of the Kobe University for his kind suggestions and help in various ways. I am also thankful to Mr. A. Nakanishi of the Kyushu University for the use of his collection.