



Fig. 1. *O. longistaminata*, Mangabe, MADAGASCAR. Aug. 29, 1985.



Fig. 2. *O. longistaminata*, Zaria, NIGERIA. Nov. 7, 1984.



Fig. 3. Gathering the seeds of *O. breviligulata*, Matam, SENEGAL. Nov. 11, 1985.

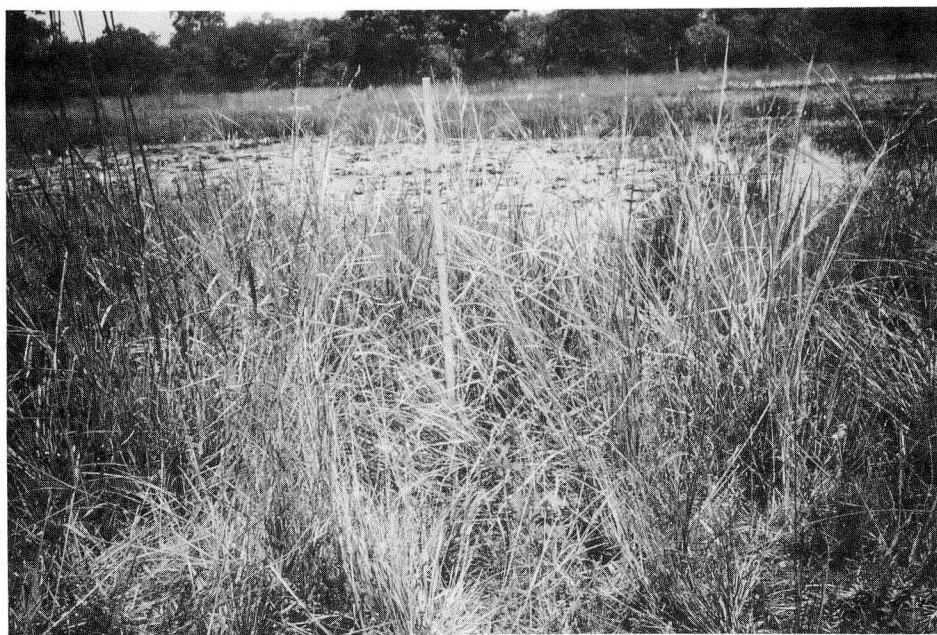


Fig. 4. *O. breviligulata*, Sobara, IVORY COAST. Oct. 31, 1984.



Fig. 5. *O. longistaminata*, Murarano, MADAGASCAR. Aug. 31, 1985.

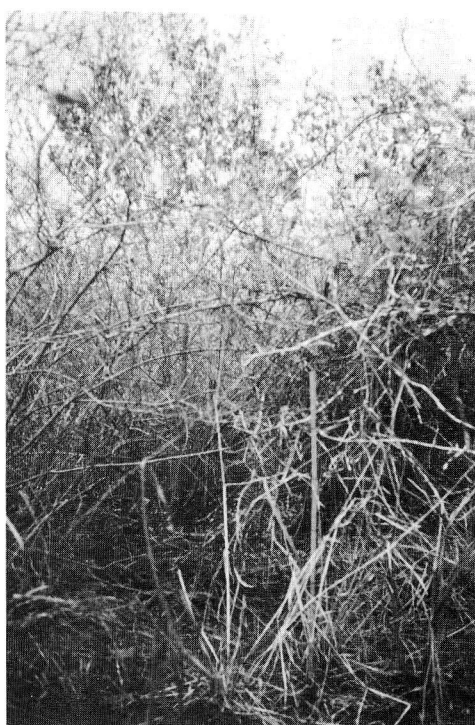


Fig. 6. *O. punctata*, Mbongo, Mariakani, KENYA. Sep. 25, 1985.

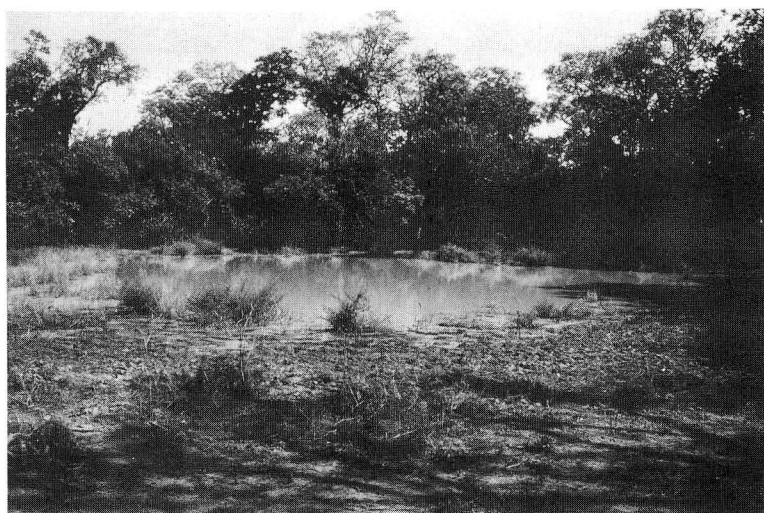


Fig. 7. *O. brachyantha*, Anambe, Casamance, SENEGAL. Nov. 3, 1985.





Fig. 8. *O. glaberrima*, Kware, NIGERIA. Oct. 4, 1985.



Fig. 9. Weeding *O. breviligulata* for *O. glaberrima* cultivation. Kware, NIGERIA. Oct. 4, 1985.





Fig. 10. Embedding manure in paddy field before planting. Moramanga, MADAGASCAR. Sep. 7, 1985.



Fig. 11. Paddy field in natural slope swampy area. Maevatanana, MADAGASCAR. Aug. 29, 1985.



Fig. 12. Harvesting paddy by hand, Boughari, Ziguinchor, SENEGAL. Nov. 4, 1985.



Fig. 13. Harvesting paddy by hand, Banjul, Jambou Women's Paddy Field, GAMBIA. Nov. 6, 1985.



Fig. 14. Threshing paddy with stick, Goudomp, SENEGAL. Nov. 1, 1985.



Fig. 15. Threshing paddy with foot, Gbapa, LIBERIA. Oct. 22, 1985.





Fig. 16. Bundling paddy, Dioloulou, SENEGAL. Nov. 5, 1985.



Fig. 17. *O. sativa* in small stream, Ble, LIBERIA. Oct. 23, 1985.



Fig. 18. Harvesting *Cajanus* sp., Saltan Hamid, KENYA. Sep. 19, 1985.



Fig. 19. Blowgun, Murarano, MADAGASCAR. Aug. 31, 1985.



Fig. 20. Tea Estate, Kipkelion, KENYA. Sep. 14, 1985.



Fig. 21. *Phyrethrum*, Nakuru, KENYA. Sep. 18, 1985.



Fig. 22. Field of Fonio, Jos, NIGERIA. Oct. 8, 1985.



Fig. 23. Field of Fonio, Jos, NIGERIA. Oct. 8, 1985.





Fig. 24. Waste land, formerly swampy area, Namayondougou, IVORY COAST. Oct. 31, 1984.



Fig. 25. Dried up Lake Alau Scheme, Maiduguri, NIGERIA. Nov. 8, 1984.

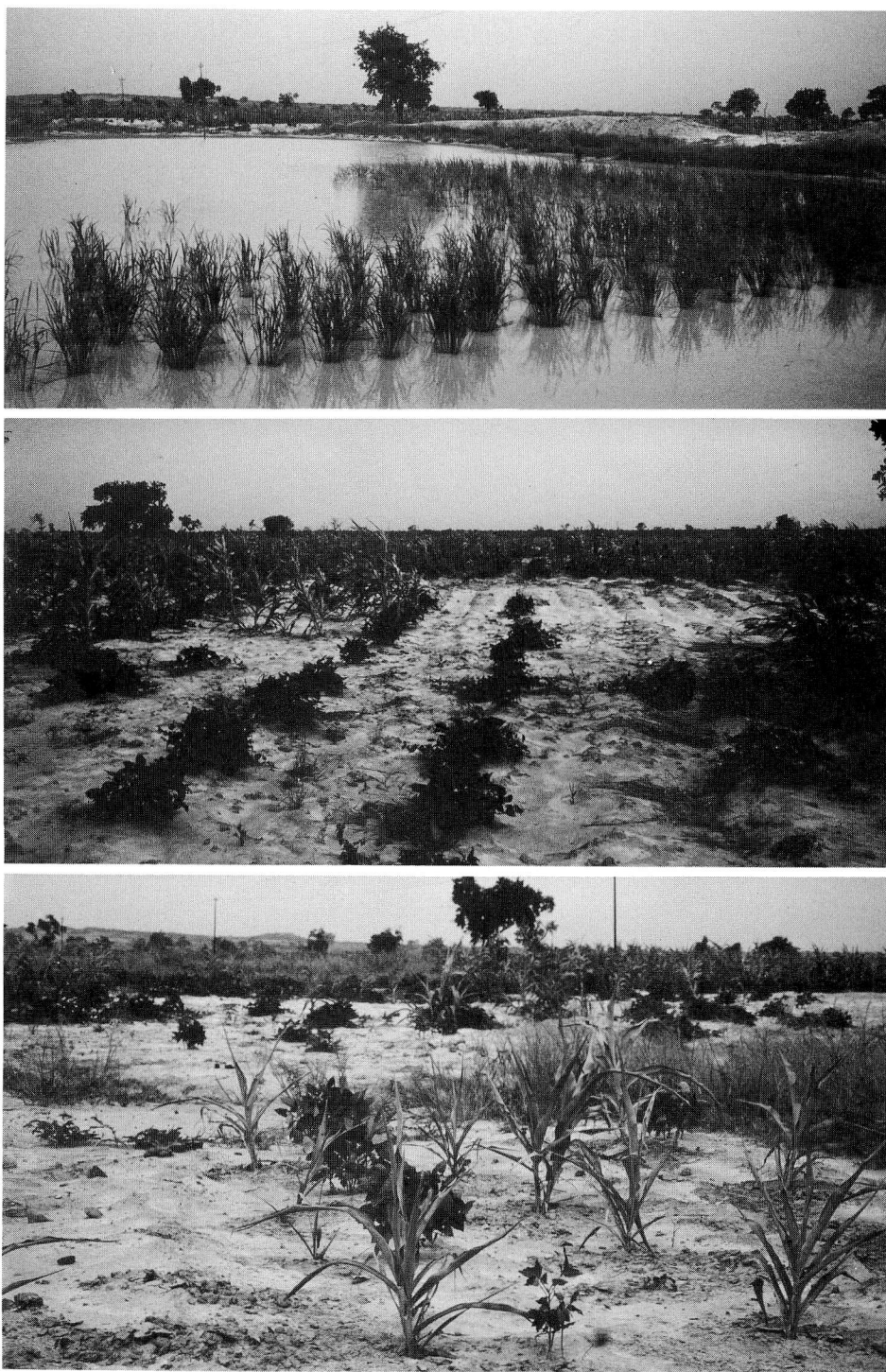


Fig. 26. (Upper) Paddy field, decreasing water level ; Fig. 27. (Middle) Pulses and sorghum cultivation surrounding the paddy field (Fig. 26) ; Fig. 28. (Lower) Nearly the same item, beginning to wilt leaves. Their three copies show the step of water stress in crop plants. Sokoto, NIGERIA. Oct. 5, 1985.



Fig. 29. Drying corn and pounding millet in a mortar, Koko, NIGERIA. Oct. 2, 1985.



Fig. 30. Handicraft village, Korhogo, IVORY COAST. Nov. 1, 1984.





Fig. 31. High floor house, Ngao, KENYA.  
Sep. 22, 1985.

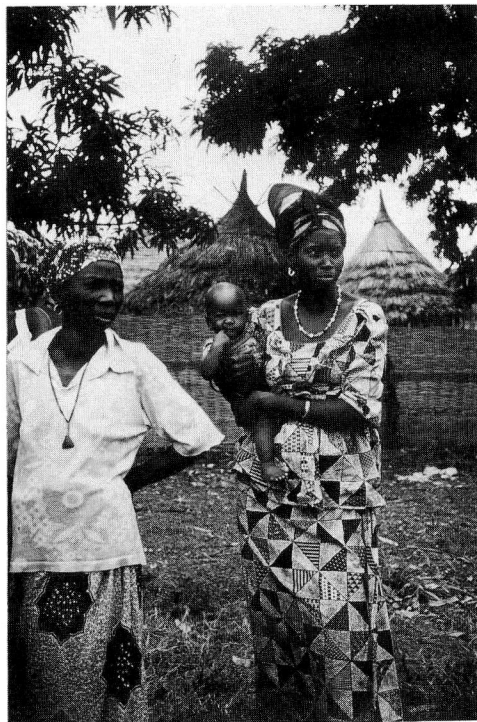


Fig. 32. Bagadadji, Casamance, SENE-  
GAL. Nov. 2, 1985.



Fig. 33. Fishing at pond growing *O. longistaminata*, Raha, NIGERIA. Oct. 3, 1985.