

Photograph page 1



Fig. 1. *Oryza longistaminata* CHEV. et ROEHR. (strain No.W35), Ambahitarivo, MADAGASCAR. June 14.



Fig. 2. *Oryza punctata* KOTSCHY (strain No.W85), Bahi Swamp, Dodoma, TANZANIA. July 13.

Photograph page 2



Fig. 3. *O. longistaminata* (W77), Mtwango, Zanzibar, TANZANIA. August 1.



Fig. 4. *O. longistaminata* (W70), Kakurgusi, Sengerema, TANZANIA. July 22.



Fig. 5. *O. punctata* (W108) and shallow water variety of *O. sativa* (C204). NAFCO, Ruvu, TANZANIA. August 5.



Fig. 6. *O. punctata* (W96) and *O. glaberrima* (C206), Kilombero, Zanzibar, TANZANIA. August 1.

Photograph page 3



Fig. 7. Sporadic growing of *O. punctata* (W50) and harvesting *O. sativa*. Ifakara, TANZANIA. July 5.



Fig. 8. Winnowing rice, Bumbwi, Zanzibar, TANZANIA. August 1.



Fig. 9. Harvesting paddy by hand. Ole, Pemba, TANZANIA. August 4.

Photograph page 4



Fig. 10. *O. longistaminata* and fishing tool, Mhaluzi, Sengerema, TANZANIA. July 22.



Fig. 11. Rice terraces, Antsirabe, MADAGASCAR. June 22.

Photograph page 5

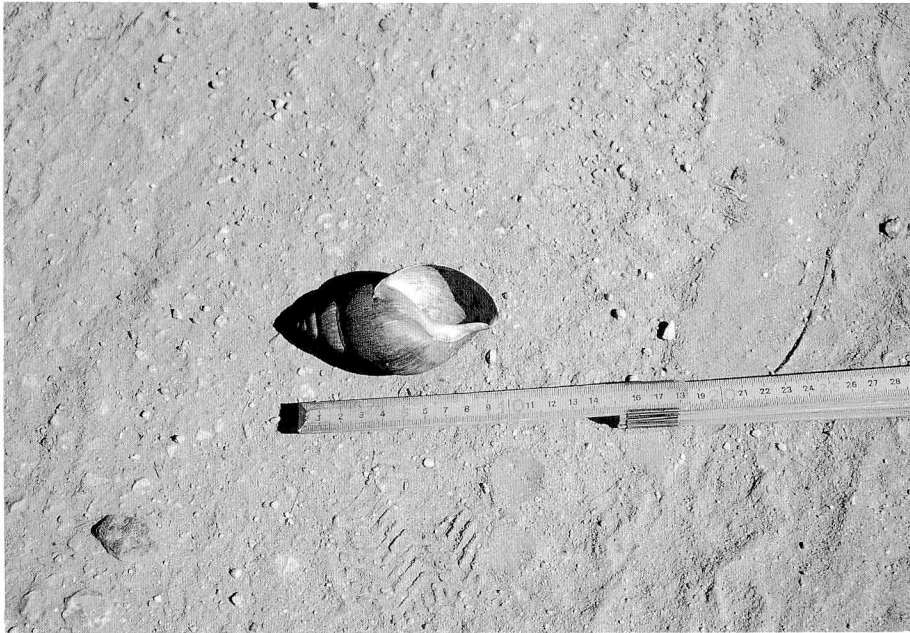


Fig. 12. Terrestrial shell for ear plucking paddy, Ifakara, TANZANIA. July 5.



Fig. 13. Threshing paddy with cow, Ambatondrazaka, MADAGASCAR. June 14.

Photograph page 6



Fig. 14. Mixed cropping of upland rice and banana in mountain slope, Brickaville, MADAGASCAR. June 17.



Fig. 15. Mountain area showing mixed cropping upland rice, banana and beans, Mafiga, Kyela, TANZANIA. July 8.

Photograph page 7

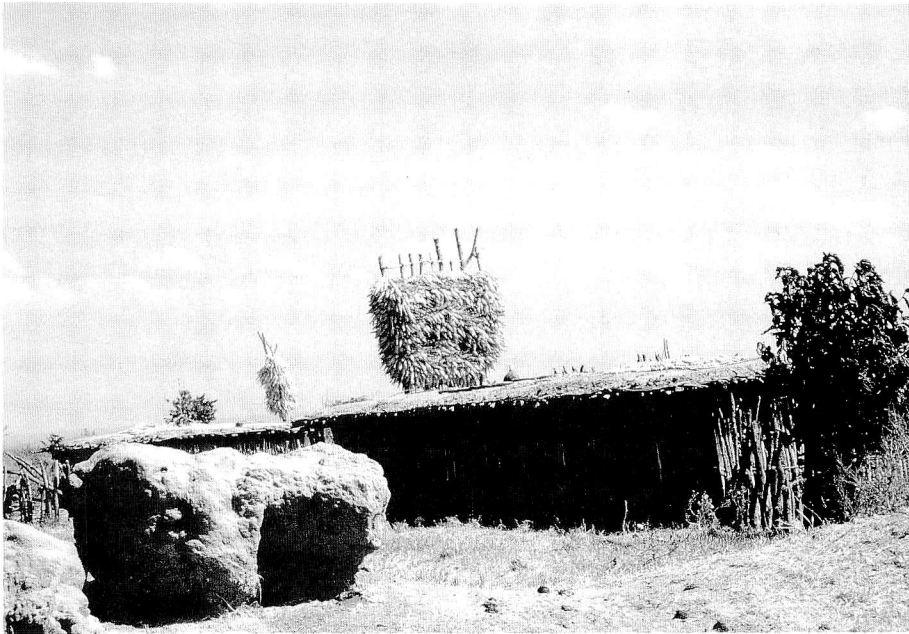


Fig. 16. Drying and storage of corn on the roof, Manyoni, TANZANIA. July 13.



Fig. 17. Storage house of paddy, Itombara, Ivuna, TANZANIA. July 7.

Photograph page 8



Fig. 18. Paddy field in slope area, edge of pond. Between Mampikony and Port Berge, MADAGASCAR. June 9.



Fig. 19. Paddy field and irrigation canal. Scale shows 1 m. Kibirinzi, Pemba, TANZANIA. August 4.

Photograph page 9



Fig. 20. Plowing terraces, Ambositra, MADAGASCAR. June 23.



Fig. 21. Plowing for potato planting, Ambalavo, MADAGASCAR. June 22.

Photograph page 10



Fig. 22. Hulling in mortar, Ambalavo, Antananarivo, MADAGASCAR. June 22.



Fig. 23. Threshing wheat with stone, near lac Tritriva, Antsirabe, MADAGASCAR. June 23.

Photograph page 11



Fig. 24. Tea plantation, Tukuyu, Mbeya, TANZANIA. July 8.



Fig. 25. *Phyrethrum* plantation, Mbeya, TANZANIA. July 8.

Photograph page 12



Fig. 26. *O. punctata* and home garden, 24 km north from Zanzibar City, TANZANIA. August 2.



Fig. 27. Upland field showing mixed cropping tomato and *Amaranthus* sp., Kasole, Kibombani, Zanzibar, TANZANIA. August 2.

Photograph page 13



Fig. 28. People migrated from Indonesia, Ambatorapy, MADAGASCAR. June 22.



Fig. 29. Children front of bricks making, Ambositra, Antsirabe, MADAGASCAR. June 23.

Photograph page 14



Fig. 30. Beehive of apiculture on the tree, Kasulu, TANZANIA. July 20.



Fig. 31. Fish culture in pond, lac Sacre, Mahajanga, MADAGASCAR. June 4.

Photograph page 15



Fig. 32. Market, Tanambe, MADAGASCAR. June 14.



Fig. 33. Market, Tanambe, MADAGASCAR. June 14.

Photograph page 16



Fig. 34. Oxcart carrying paddy, Vohitraivo, MADAGASCAR. June 14.



Fig. 35. Shop of article made by leaves of *Raphia* palm on an avenue of pines, Ambositra, Antsirabe, MADAGASCAR. June 24.