

1
2
3
4
5
6
7
8
9
10
11
12
13
14
15
16
17
18
19
20
21
22
23
24
25

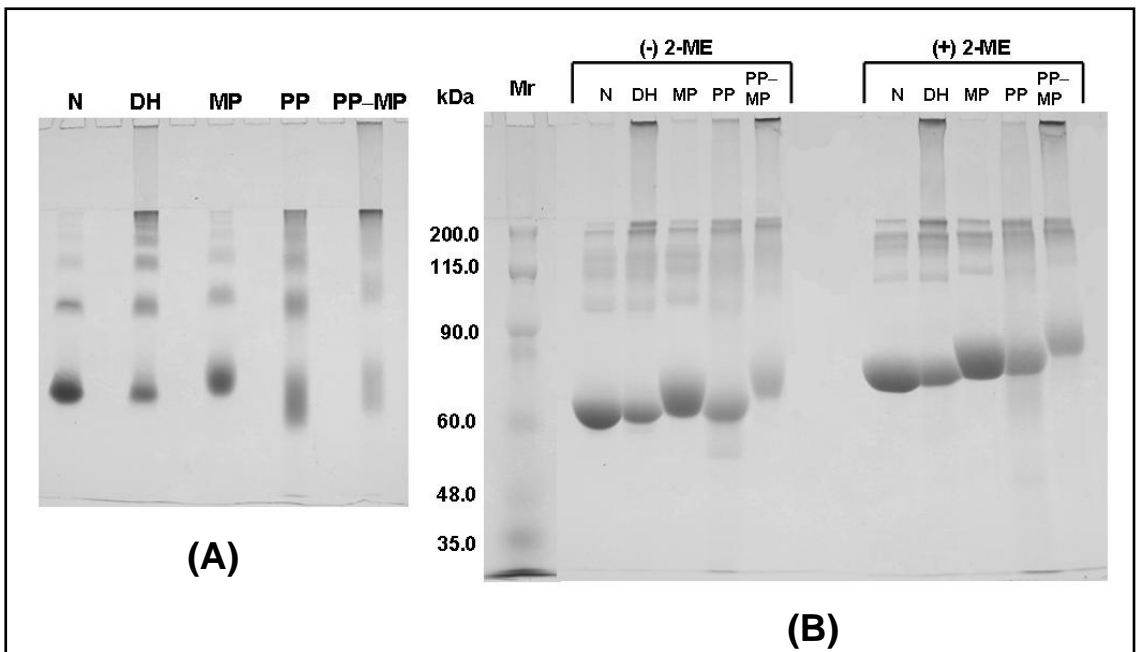


Figure 1—Electrophoretic patterns of native (N), dry-heated (DH), maltopentaose-conjugated (MP), phosphorylated (PP), and phosphorylated and maltopentaose-conjugated (PP–MP) bovine serum albumin (BSA): (A) native PAGE (8.5% polyacrylamide gel without SDS); (B) SDS-PAGE (8.5% polyacrylamide gel with 1.7% SDS) with (+) and without (-) 5% of 2-mercaptoethanol (2-ME); Mr, marker protein.

Figure 1.
Enomoto and others.