

Figure 1. Schematic presentation of horizontal gene transfer.

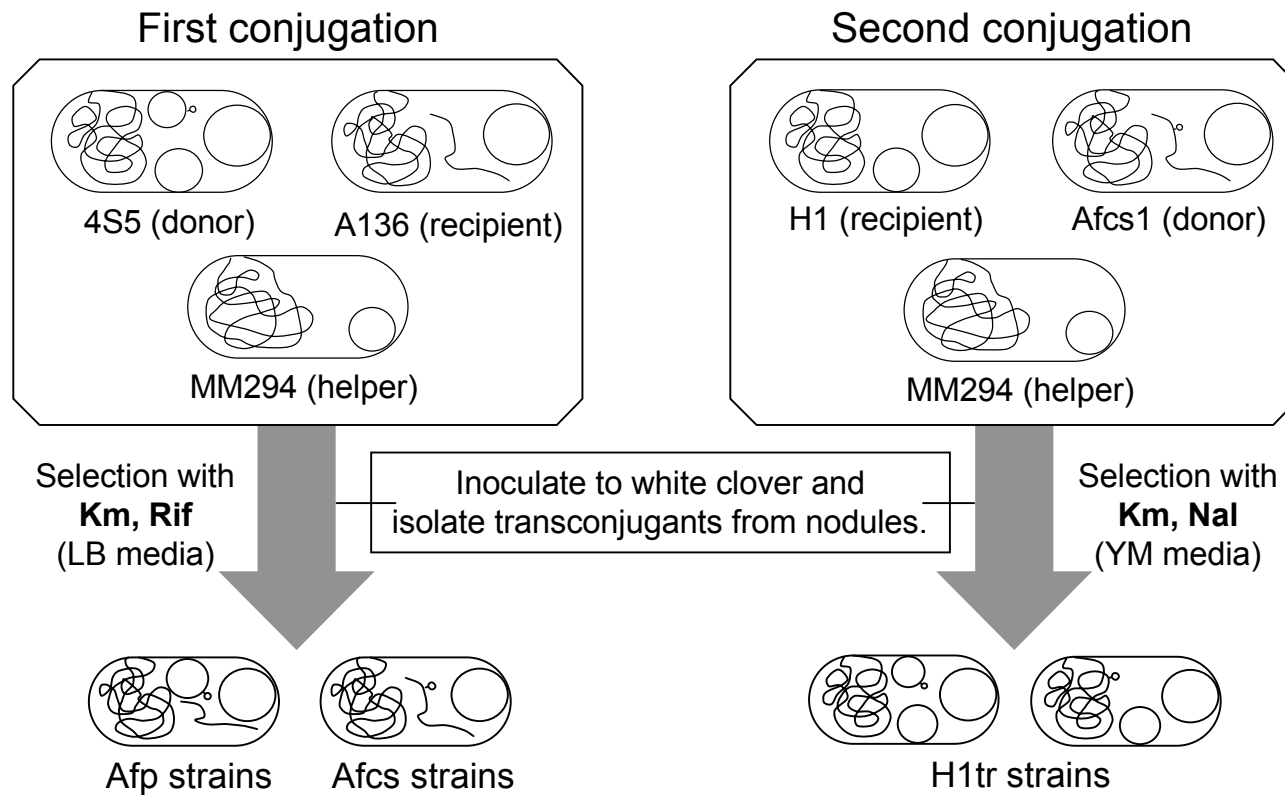


Figure 2. Schematic presentation of pSym transfer by conjugation between *Rhizobium* and *Agrobacterium*.

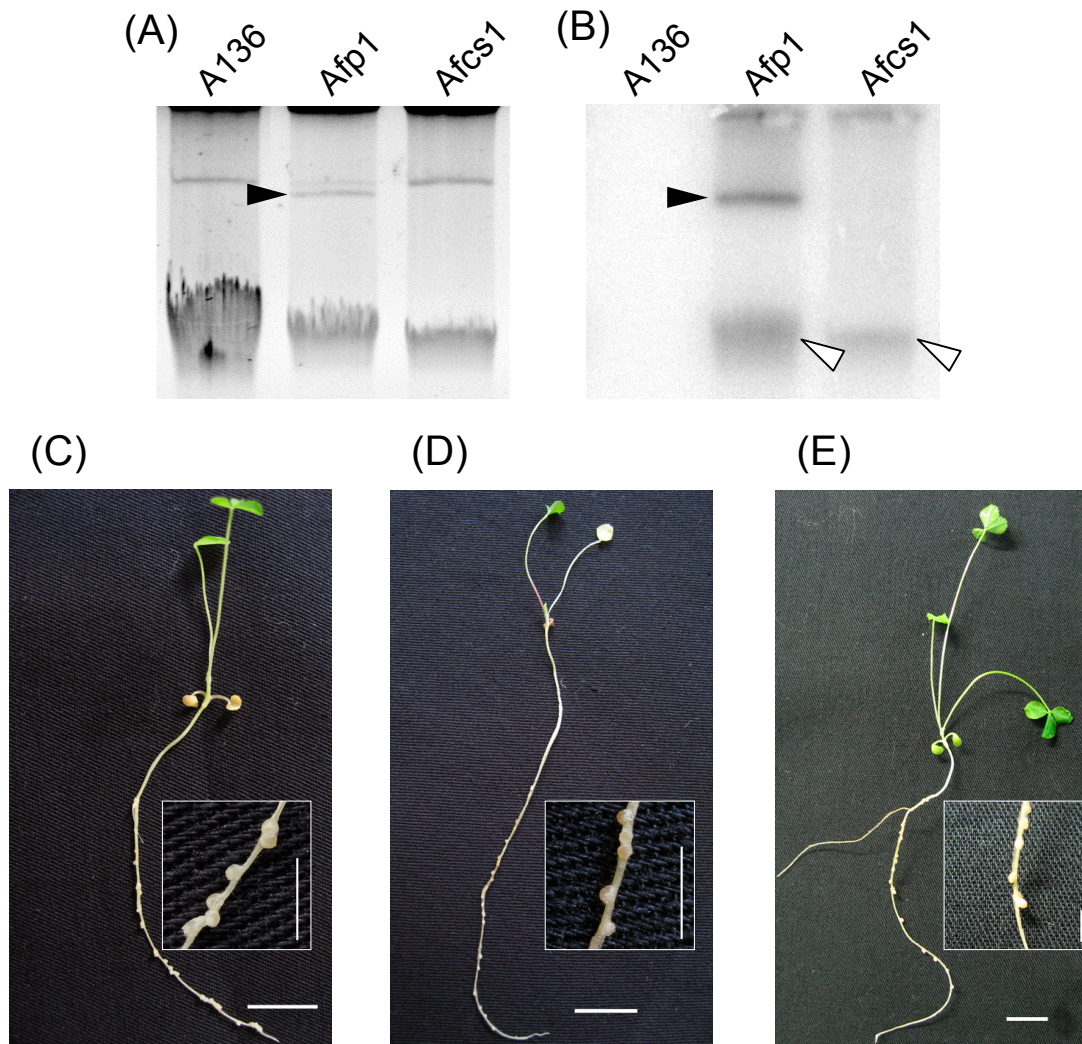


Figure 3. Plasmid profile and nodulation of *Agrobacterium* strains.

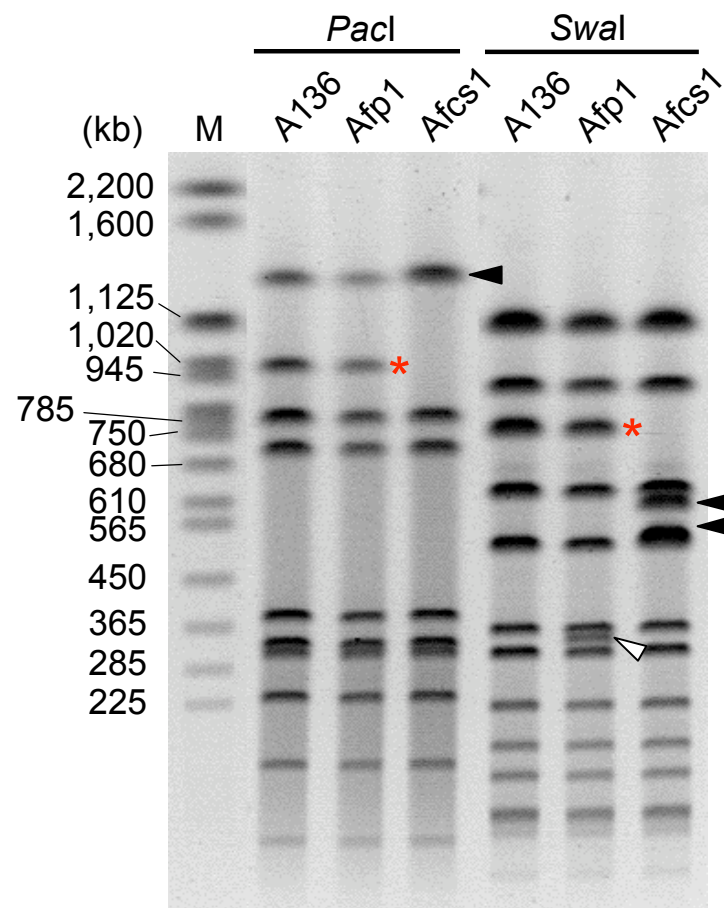


Figure 4. Pulsed-field agarose gel electrophoresis of *PacI* and *SmaI* digests of genomic DNA from the *Agrobacterium* strains.

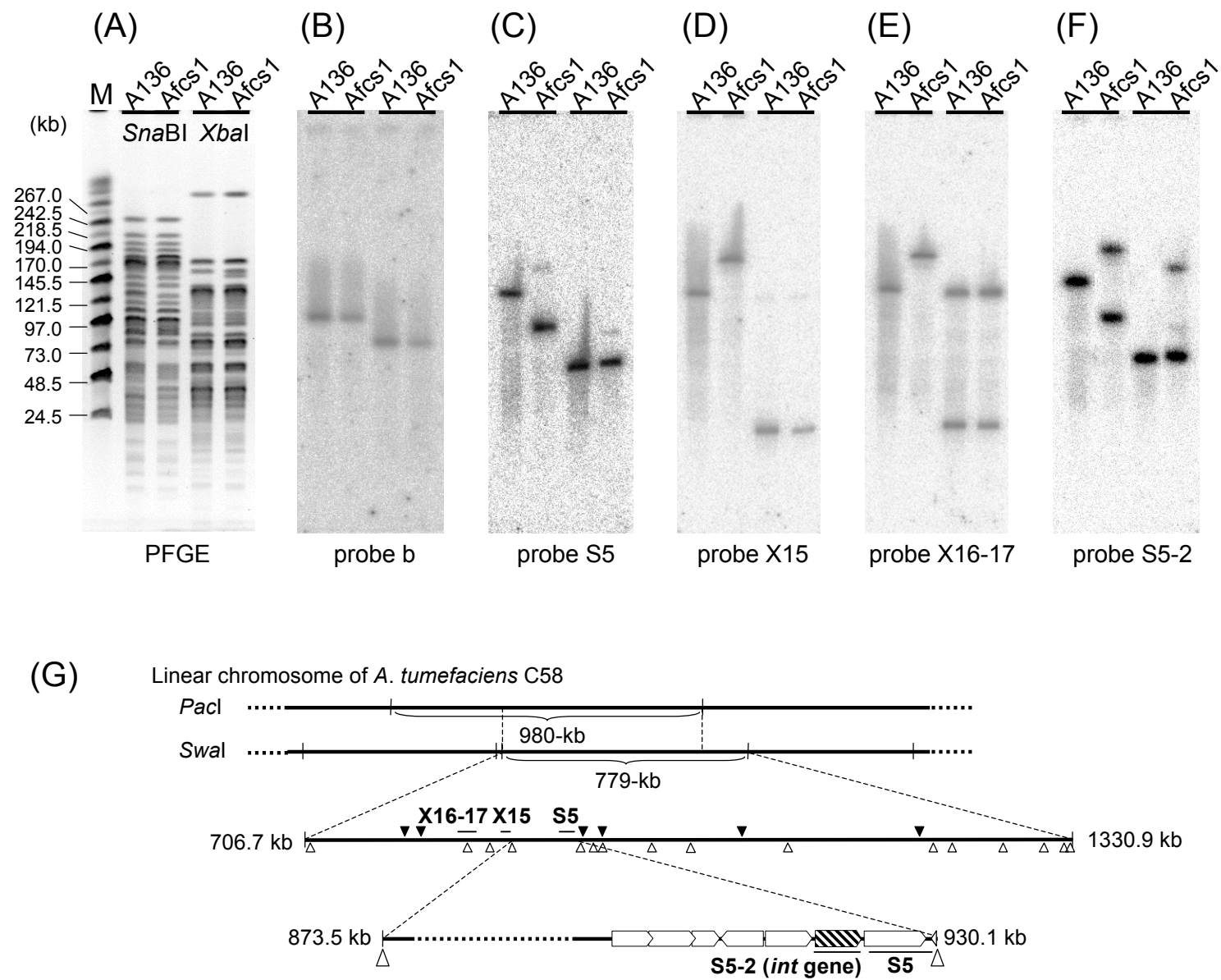


Figure 5. Identification of the integration site of pRt4Sa::Tn5-mob in the linear chromosome of *Agrobacterium*.

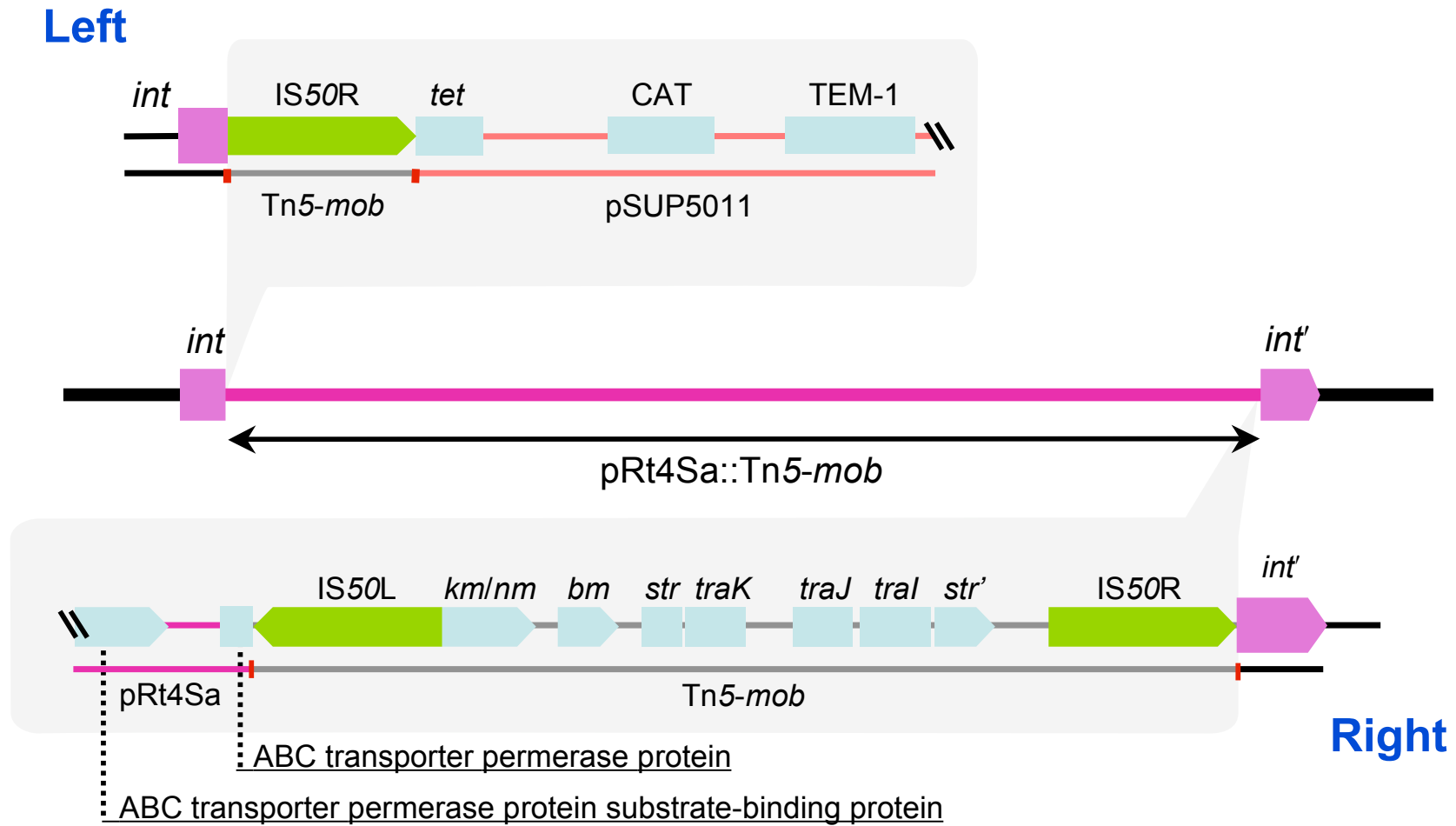


Figure 6. Physical map of the left and right junctions of the pRt4Sa::Tn5-mob and the linear chromosome of *Agrobacterium* transconjugant Afcs1.

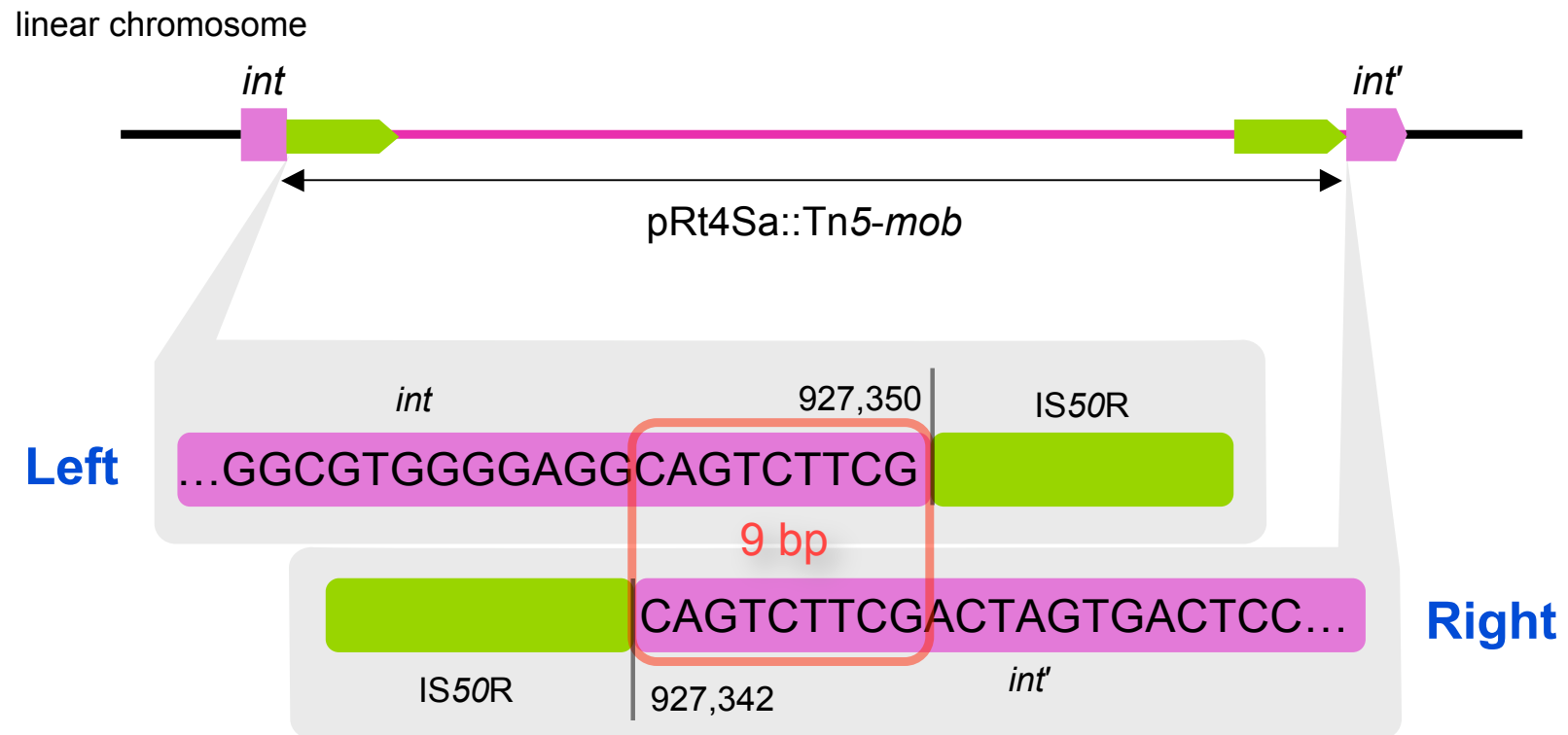


Figure 7. Scheme for the both junction regions of *pRt4Sa::Tn5-mob* and comparison of their sequences

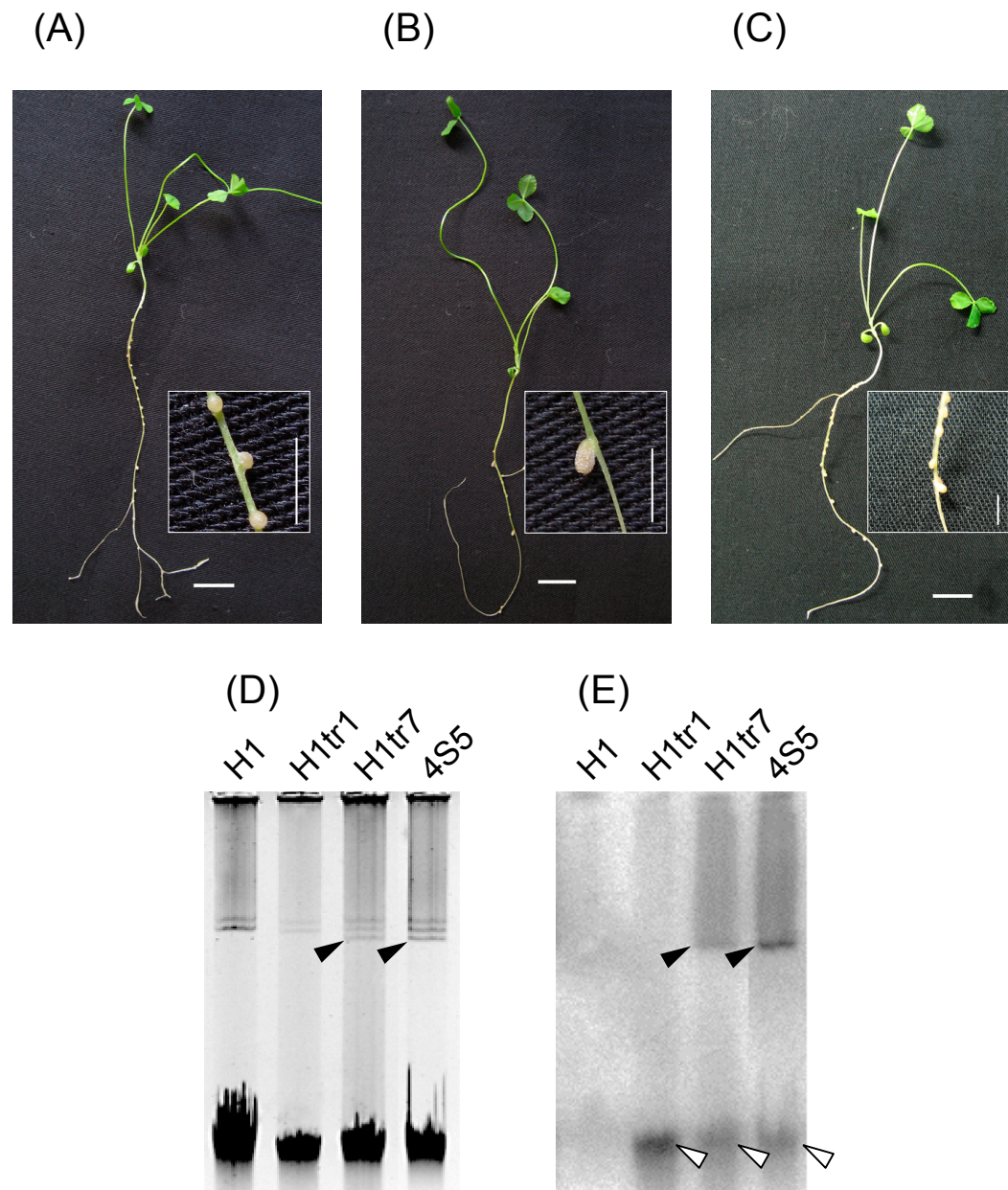


Figure 9. Root nodules induced by *Rhizobium* strains, and characterization of plasmids in *Rhizobium* strains.

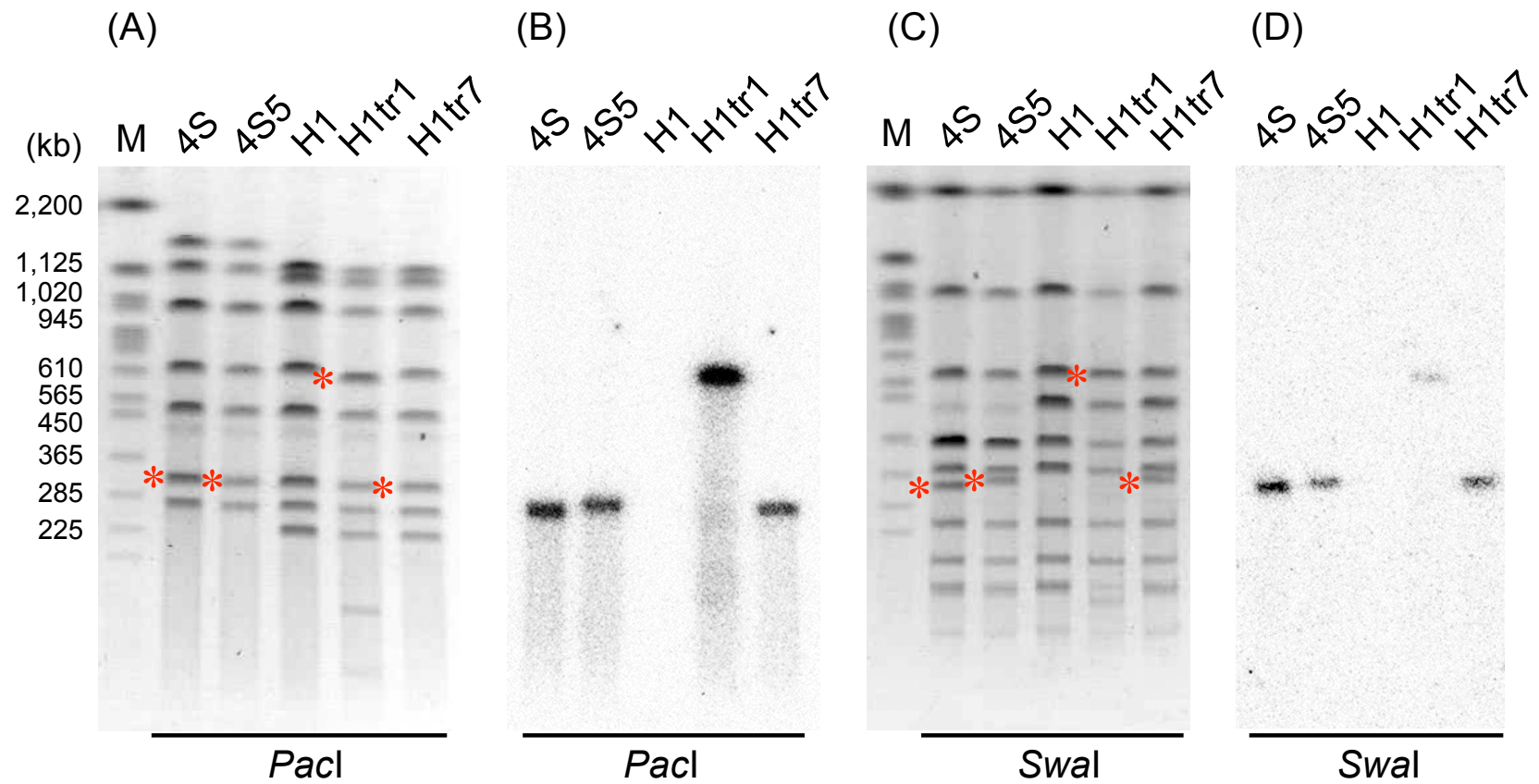


Figure 10. Agarose gel electrophoresis and Southern hybridization of *PacI* and *SmaI* digests of genomic DNA from *Rhizobium* strains.